



THE GUILFORDIAN

Greensboro, N.C.

Volume 91, Issue 16

January 28, 2005

www.guilfordian.com

More personnel changes for Campus Life

After the departure of four staff members last fall, the Office of Campus Life announces the departure of Moss, Crisp, and Lundquist

Charlie McAlpin

Staff Writer

Leslie Moss resigned from her position as Associate Dean for Student Development on Jan. 21. By the end of the spring semester, three key members of Campus Life will have left within six months.

Shelley Crisp, Director of the First Year Program, left in December, and Anne Lundquist, Dean for Campus Life, will leave in May.

"These are three unrelated things, but they affect my staff and students," Lundquist said.

Moss left so her husband could pursue a job opportunity in Colorado as professional golf consultant for Dick's Sporting Goods. "To ask her to leave was very difficult," said husband Rich Moss, but "it was just a good time."

Moss ran orientation projects like CHAOS and Avanti, supervised the Office of Student Involvement and Leadership, headed the major spring events surrounding graduation, and addressed general student concerns as they arose.

She worked at Guilford for four and a half years and was promoted three times. Moss retained her most recent position for the last six months.

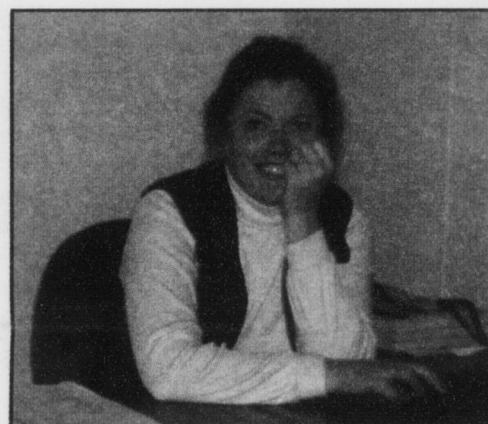
"She has kind of hit her ceiling," said Lundquist. "Career-wise, she would have left soon anyway."

"Obviously, it's not the greatest time in the semester for me to leave," said Moss.

"I'm not trying to leave the college in a lurch. I'm just stuck."

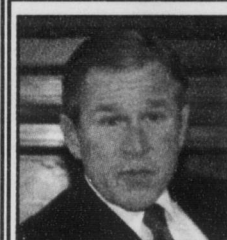
Lundquist, on the other hand, thinks it is a decent time for Moss to leave. Because she works heavily on end-of-spring

Continued on Page 3



TALEISHA BOWEN/THE GUILFORDIAN

Associate Dean for Student Development Leslie Moss resigned Jan 21



Bush to increase Pell Grant

Page 4



Do's and Don'ts of Body Mod

Page 6



Guilford students protest inauguration

Page 7



NFL playoffs update

Page 12

Community budget meeting outlines changes

Traditional students can expect a 5.9% tuition increase

Caitlin Adams

Staff Writer

Associate Professor of Accounting Raymond Johnson greeted those that walked into the Jan. 19 budget meeting. "Help yourself to food and drinks," he said. "It's in the budget."

The first budget meeting of the 2004-05 year happened Nov. 4, 2004, when aspects of the budget were laid out. The Jan. 19 meeting was to discuss what has transpired since.

"This meeting is to show how the budget process does or does not dovetail with the recently approved strategic

plan," said Johnson.

Johnson began his presentation emphasizing the availability of the budget information. "All Guilford community members are aware of the budget, nothing is a secret." Johnson then led the audience of students, faculty and staff through a PowerPoint presentation outlining the proposed budget and process through which it is decided.

The budget committee will now attempt to reach consensus on the 2005-06 budget. The committee will then recommend the budget to President Kent Chabotar. Chabotar in turn recommends the budget to the Board of Trustees for final approval the third week in February.

The proposed 2005-06 capital budget is \$4.4 million.

"The bottom line," said Johnson, "is to reach a balanced budget and have a drop in endowment reliance." The goal for financial equilibrium is 2006.

"The budget has successfully

**"The bottom line is to reach a balanced budget and have a drop in endowment reliance."
~Associate Professor of Accounting Raymond Johnson**

absorbed the revenues and costs of the strategic plan," said the President.

By the proposed budget, traditional students will experience a 5.9% increase in tuition. Current tuition, including room and board, is \$26,600, rising to

\$28,170. This would be an additional 1.9% increase above the 4% increase proposed in the Strategic Long Range Plan.

Center for Continuing Education (CCE) student tuition will increase from \$229 to \$239 per-credit hour.

Upon the mention of this statistic sophomore Adam Waxman immediately questioned the gap between traditional student tuition increase and CCE student tuition increase.

"(The) CCE market is much more competitive," Johnson replied.

Guilford must keep prices lower than the neighboring colleges and universities to keep CCE students. Johnson explained that in the new budget the financial aid plan is larger and restructured.

Continued on Page 3