

Senate Column

By **TIM SCALES** | SENATE PRESIDENT

Welcome to a new year! As we are all settling into a new routine of classes and extracurricular activities, Community Senate is gearing up for the new semester. We have big plans for the coming year, and we are excited to get started.

For those of you who are new to the school, here is a rundown of how Senate works.

Primarily, Senate is a representative of the student voice. We represent student interests in the college's decision-making process, and work to ensure that student concerns are addressed. I encourage you to come to us with your concerns or suggestions throughout the year. There is power in the student voice, and Senate can be the mouthpiece.

In addition to hearing community concerns, Senate manages the creation and organization of student clubs, administers the allocation of Student Activity Fees, and distributes grants for special projects and events.

Community Senate also has several committees, each of which focuses on a particular area of campus life:

- Community and Student Concerns (CSC), chaired this year by Erik Belmont, deals with issues related to campus life.

- The Inter-Club Council (ICC), co-chaired by Aleks Babic and Britiany Green, works to facilitate communication and cooperation between clubs, as well as allocate grants for club activities.

- The Academic Affairs committee, chaired by George Petrov, looks at concerns related to academics and classes.

- The Student Residence Council (SRC), chaired by Stephanie Boczenowski, deals with issues relating to residence life and allocates grants for residence hall programs.

- Last but not least, the newly-formed First-Year Liaison Committee hears first-year concerns and works to involve first-years in the Senate process. This committee is co-chaired by Meisha McDaniel and Tory Mallett.

If you have questions about the role of these committees, or have an issue that you would like to bring before a committee, please feel free to contact the appropriate chairperson. She or he will be happy to help you through the

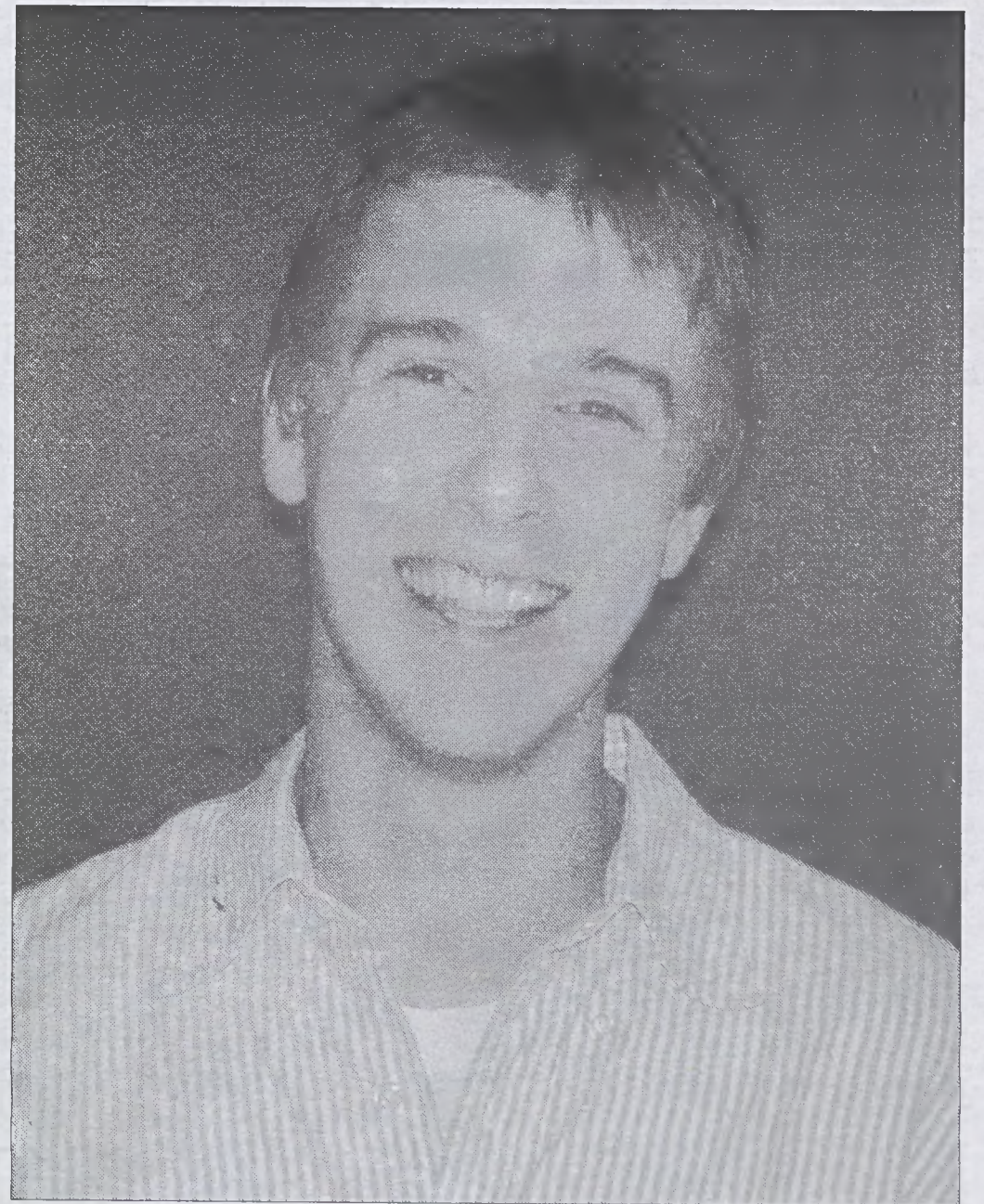
process.

In order for Senate to realize its full potential, it needs the input of the student body. Therefore, I encourage you all to get involved. It is a great way to become involved in Guilford's decision-making process, while at the same time building valuable leadership experience and having a lot of fun.

If you are interested in becoming a part of this year's Community Senate, please pick up a sign-up form from the Information Desk in Founders Hall. These forms are due back to the Information Desk by Sunday, Sept. 3 at 7 p.m. Elections for contested Senator positions will be held on Monday, Sept. 11. If you have any questions about this process, please talk to Senate Vice President Katie Bailey (kbailey@guilford.edu).

Finally, Senate will be holding a Meet and Greet on the Founders patio on Saturday night. There will be lots of food, fun and music, so please stop by. For more information, please check out the flyers around campus or send Tim an e-mail (tscales@guilford.edu).

Have a great week!



TIM SCALES, PRESIDENT OF COMMUNITY SENATE. BY KATE SELBY.



Join The Guilfordian!
 Seeking writers, editors,
 photographers and
 graphic designers.
 E-mail Matt at:
 mhaselto@guilford.edu

The Guilfordian Staff

Editor in Chief
 Matt Haselton
 mhaselto@guilford.edu

Managing Editor
 Jeremy Bante
 jbante@guilford.edu

Business Manager
 Sarah Adkisson
 sadkisso@guilford.edu

Section Editors
 News Editor
 Josh Cohen
 jcohen@guilford.edu

World & Nation Editor
 Pascale Vallee
 pvallee@guilford.edu

Features Editors
 Dylan Grayson
 dgrayson@guilford.edu

Genevieve Holmes
 gholmes@guilford.edu

Forum Editor
 Laird Allen
 lallen@guilford.edu

Sports Editor
 Matt Goldman
 mgoldman@guilford.edu

Photo Editors
 Landry Haarmann
 lhaarmann@guilford.edu

Kate Talbot
 ktalbot@guilford.edu

Layout Editors
 Dan Etter
 detter@guilford.edu

Kate Selby
 kselby@guilford.edu

Staff Writers
 Katie Bailey
 Joe Battaglia
 Jake Blumgart
 Bryan Cahall

Charlie Clay
 Adra Cooper
 Ben Dedman
 Denise Fisher
 Robbie Fisher
 Ashley Hardiman
 Juliana Janisch
 Grayson Lyles
 Jamie Metrick
 Pete McGuire
 Laura Milot
 David Norton
 Joe Overby
 Kip Reynolds
 Becca Spence
 Steven Tutterow
 Caryn Washington
 Megan Wise

Staff Photographers
 Amelia Godfrey
 Katelyn Hennessey
 Julian Kennedy

Faculty Advisor
 Jeff Jeske

Subscriptions

To receive The Guilfordian in your mailbox, send an e-mail with your name and King, Founders or Hendricks Hall box number to: GuilfordianDist@guilford.edu

Advertisements

To advertise in The Guilfordian, e-mail an inquiry to: GuilfordianAds@guilford.edu

Letters

Submit all letters to: Guilfordian@guilford.edu. Letters must be no longer than 300 words, and are subject to editorial review.