



Alcohol poisonings on campus are low, booze remains issue

By Jake Blumgart
SENIOR WRITER

Ever since Alcibiades showed up late to the Symposium, picking grape peels from between his teeth and making dirty jokes, higher education has been linked in the popular mind with rigorous alcohol use.

The popular conception of the college drinking tradition is probably linked to "Animal House" more than the dialogues of Plato. No matter its origins, and much to the chagrin of administrators everywhere, the conspicuous consumption of alcohol is a fact of life at most colleges.

Guilford is no exception. Every year a new batch of freshmen strut onto campus, free from the lidless parental eye and willing to experiment with most anything twice. The varieties of cheap, watery beer are endless, and easily procurable via poorly crafted fake

SEE "ALCOHOL" ON PAGE 10

Meeting strains US-China relations



CBSNEWS.COM

President Bush meets the Dalai Lama

By Reid Cranfill
STAFF WRITER

Shaking hands with President George W. Bush on Oct. 17, the Dalai Lama received a Congressional Gold Medal struck with a design unique to his lifelong achievements.

"I am deeply touched that this great honor has been given to me, a Buddhist monk born of a simple family," the Dalai Lama said.

In a politically sensitive transition, as it holds the Communist Party Congress as a part of its five-year internal election cycle, China has protested the award as U.S. support for the Dalai Lama.

"The move of the United States is a blatant interference in China's internal affairs," said PRC Foreign Ministry spokesman Liu Jianchao to BBC news.

The spiritual leader of Tibetan Buddhism

SEE "DALAI LAMA" ON PAGE 7



DRUNK DRIVING ON CAMPUS well, kind of

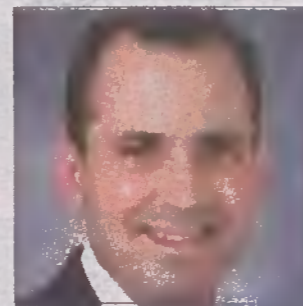


PHOTOS BY LIZZA VACHON/GUILFORDIAN

During Homecoming Public Safety had students seeing double in the Saturday sun as they tried to negotiate a golf cart course while impaired by optic-distorting beer goggles.

A NEW REALM OF POSSIBILITIES

Shifts ahead for college leadership team



Aaron Fetrow will be promoted to dean of students effective Jan. 1, 2008.

By Sari Schutrum-Boward
STAFF WRITER

On Jan. 1, 2008, Guilford will see changes in positions for Randy Doss and Aaron Fetrow. Doss will become vice president for enrollment services and Fetrow will be promoted to dean of students.

The new management changes will not significantly affect their working relationships with President Kent Chabotar.

"In terms of how I work with Randy and Aaron, things are not going to change much," Chabotar said.

Doss graduated from Guilford in 1982 and returned after he spent fifteen years working at Greensboro College as chief admissions officer. In January 2000, he ventured back to Guilford as dean of enrollment. He has been vice president of enrollment and campus life

since May 2001.

Senior Brennan Aberle, Community Senate treasurer, believes that Doss does his job well. He is concerned, however, that Doss focuses exclusively on fulfilling his enrollment quotas.

"I think Randy cares more about the ends than the means when it comes to meeting our enrollment projections," Aberle said. "What he does, he does well at."

Chabotar has recognized Doss' success in the increase of traditional-aged admission. Since Doss' arrival, the applications from traditional-aged students have increased by 161 percent and first-year enrollment by 39 percent. Meanwhile, the acceptance rate has dropped from 77 percent to 58 percent, meaning that the college has become more selective.



Randy Doss will be named vice president for enrollment services effective Jan. 1, 2008.

SEE "MANAGEMENT" ON PAGE 5

Alumni magazine printed with FSC-approved paper

By Deena Zaru
STAFF WRITER

The past issue of the Guilford alumni magazine has been printed with Forest Stewardship Council (FSC)-approved paper.

The magazine is published twice a year, usually around Thanksgiving and after graduation in May.

According to www.fsc.org, the FSC is "an international not-for-profit membership-based organization that brings people together to find solutions to the problems created by bad forestry practices and to reward good forest management."

"Any time you have a certification process with accountability and transparency you can have more environmentally sound methods and a more environmentally sustainable product at the end," said Kim Yarbray, environmental sustainability coordinator.

Suppliers like the local Mac Papers provide FSC-approved products.

"The paper industry is the largest consumer of water, the largest consumer of trees, and one of the largest consumers of energy," said Gene Ledbetter, a Mac Papers sales representative. "So when you consume all three of those, people take a notice in what you do, which is why the paper mills are taking very serious actions to respond to environmental concerns."

Sophomore Emma Deutsch lives in The Pines, the environmental and sustainability house. Pines residents are committed to living in ways that are environmentally friendly and sustainable.

"Using paper with recycled content is

SEE "ALUMNI MAGAZINE" ON PAGE 4