

2011

DOUGHERTY NAMES AND UNVEILS STICK STRUCTURE

SEE PAGE 8

VOLUME 97, ISSUE 18 // FEBRUARY 25, 2011

# THE GUILFORDIAN

GUILFORD COLLEGE // WWW.GUILFORDIAN.COM // GREENSBORO, NC

DARREN LANE/GUILFORDIAN

## NEWS

### City considers reopening White Street Landfill

GSO DEBATES COST OF LANDFILL, RESIDENTS EXPRESS WORRY OVER IMPACT ON COMMUNITY

By Keyla Beebe  
STAFF WRITER

The White Street Landfill, located in Northeast Greensboro, was closed over five years ago to save residents from odor, traffic and buzzards. Met with community opposition, the Greensboro City Council has recently proposed reopening the landfill in order to save money.

In 2006, after years of lawsuits and protests from residents, the landfill closed its facilities to household trash.

SEE "LANDFILL" ON PAGE 2



The White Street Landfill was closed over five years ago to improve life in the surrounding neighborhoods but the Greensboro City Council recently proposed to reopen it in order to save money.

TAYLOR SHIELDS/GUILFORDIAN

## NEWS

### IAF community organizer hosts activism talk

GERALD TAYLOR ENCOURAGES STUDENT ACTIVISM, STRESSES COMMUNITY INVOLVEMENT

By Amanda Dahill-Moore  
STAFF WRITER

"The real question is: do you think there is a need for organizing in Greensboro? Do you think there is a need for organizing on Guilford College campus? Is there a need for you to be part of something which is trying to change this community and the area in which you are living?"

Gerald Taylor — lead organizer for the Industrial Areas Foundation's Southeast region chapter — posed these and other questions in a preliminary discussion held with Guilford students and faculty on Feb. 17 in Bryan Jr. Auditorium to see whether Guilford has the drive and potential to become a new chapter of the IAF.

The IAF, America's oldest community-organizing network, is an affiliation which enables communities to fight systematic injustice and social inequities through grassroots organizing.

"We move into communities by invitation only," said Taylor. "This step is intentional; it forces communities to organize around getting signatures for our invitation."

Sherry Giles, associate professor of justice and policy studies, organized the event. Giles received training by the IAF while she was working as a counselor in the public school system of Brooklyn, N.Y.

"I saw that organizing parents to address the issues that made it hard to raise their children in their neighborhoods gave (the parents) the confidence and skills to improve their lives and their communities," said Giles in an e-mail interview.

SEE "ORGANIZER" ON PAGE 3

## FEATURES

### Students present PPS projects, compete for prize

Junior **Graham Bryden**, of the project titled "Reaching out to the Stars and the Community using Radio Astronomy," sits next to a TV showing a webcam image of the radio telescope on top of Frank Family Science Center.



TAYLOR SHIELDS/GUILFORDIAN

By Meg Holden  
STAFF WRITER

With a prize of \$1,000 on the line, 10 students work furiously to polish their projects to perfection before the judging is finished. This isn't a new game show — this is the GUS Challenge, and it's happening now.

Officially titled the Principled Problem Solving Guilford Undergraduate Symposium Small Group Project Challenge, the

competition involves three groups of students who have researched, designed, and implemented projects to improve Guilford and Greensboro. Now, the groups will present their projects — "Access Everywhere: Handicap Accessibility on Guilford Campus," "Reaching out to the Stars and the Community using Radio Astronomy," and "Rooting

SEE "PRIZE" ON PAGE 8

## This week online

WWW.GUILFORDIAN.COM

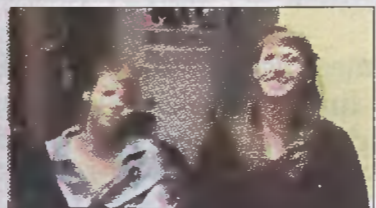
VIDEOS



GNN with Ashley Lynch & Millie Carter



Nick Bunitsky and Mitchell Hamilton review "Unknown"



Justin Bieber by Lindsay Vanderhoogt

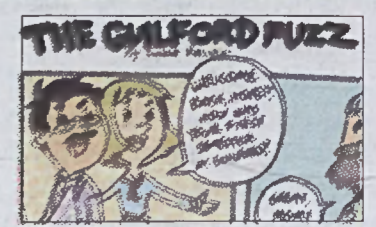
STORIES



The Green Bean: Elm Street's eclectic coffee house

By Terah Kelleher

COMICS



The Guilford Fuzz by Elaine Kellogg