

HOME ECO. GIRLS PRESENT FASHION SHOW

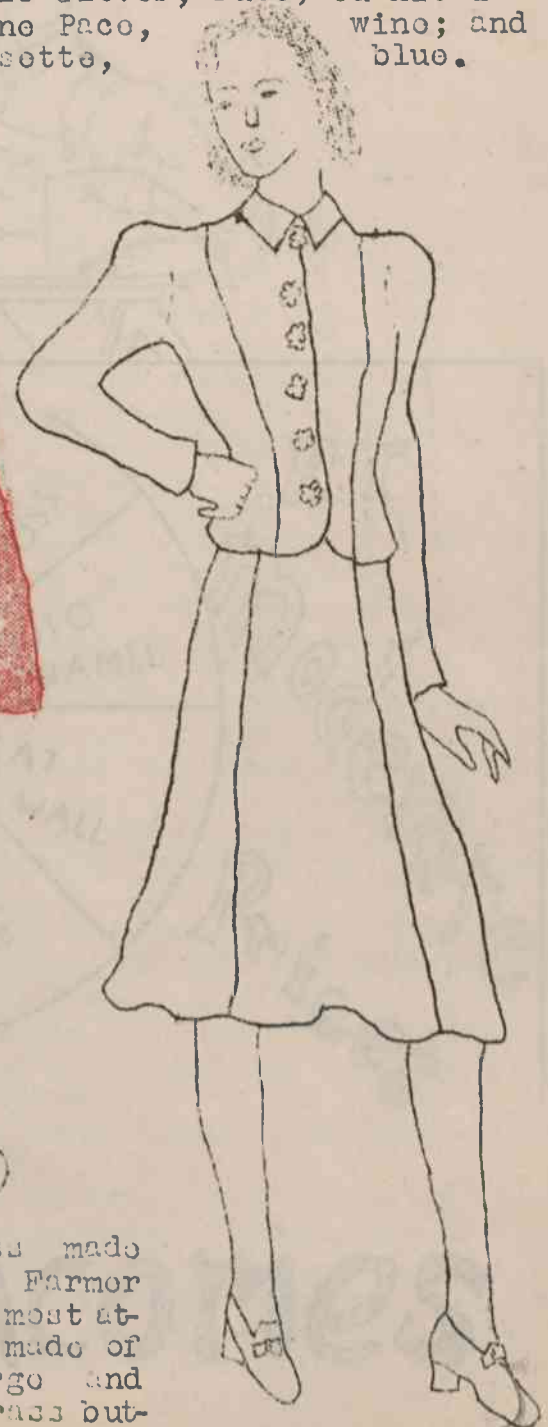
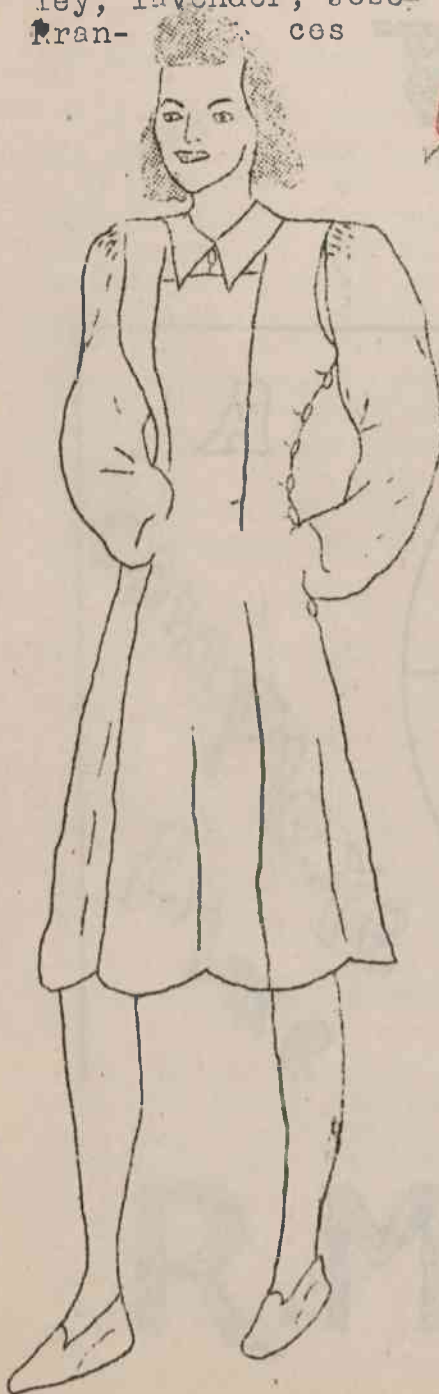
For the ninth grade chapel economics girls presented their wore the wool dresses made

Laverne Horner and Romaine a play entitled "Margie Has party given by Margie wear- Even though it is not shown dress was one of the most sette chose shades of Jordan, a blue stripe; ley, lavender; Jose- Fran- ces

program this time the Home Eco- annual fashion show in which they in class.

Perry were the main characters in A Party." The girls attended the ing their new dresses.

on this page, Hildred Ruffin's attractive. Iris High and Irene His- aqua; Martha Bunn, green; Pearl Janie Glover, rust; Juanita Brant- shine Pace, wine; and Bissette, blue.



Mary Rose Brown's aqua jumper with a white long sleeved blouse was voted very attractive.

The above dress made by Sarah Morgan Farmer was judged the most attractive. It is made of light weight sergo and trimmed with brass buttons.

The linen dresses will soon be designed for the Spring work.

Aileen Finch's dusty rose with brown buttons was selected as one of the best made.