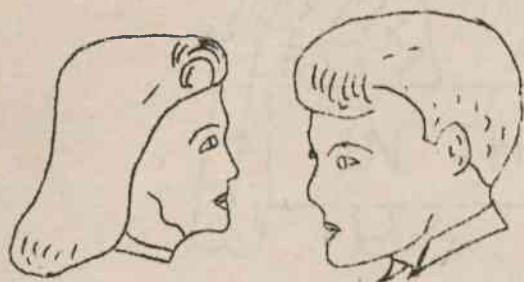


PERSONALITY PARADE



—ourageous
—ealthy
—thletic
—oligious
—ino-shooter
—norgetic
—miling

—ischievous
—egatistical
—opondable
—ikeable
—ntelligent
—eat

—orose
—dealistic
—ighthhearted
—ofiant
—oserved
—fficient
—iligent

—onignant
—arnest
—rgumentative
—cellistic
—rastic

WHO? FILL IN BLANKS

H.S. HONOR ROLL

SARAH MORGAN FARMER

CHRISTINE FINCH

MARIE MORGAN

IF YOU ARE PLANNING
TO BUY A NEW CAR
SEE THE

41 CHEVROLET

FARMER MOTOR CO
BAILEY, N.C.

TEACHER THOUGHTS

Miss Hill

Living our life in our own way is a cruel, wasteful and brutally selfish way, unless we have chosen to live according to the principles which uplift humanity. Which way have you chosen? At the end of each day can you look back with no remorse for any word you have said or any act you have done? Watch your tongue, for it is often your most dangerous enemy. Have you been discourteous to any you have met? Have you crumbled because your work seemed to be a little heavy or difficult? If you have, then look yourself in the eye and condemn yourself for the little wrongs you have done. Remember that it is the little deeds in life that really count. Be honest with yourself. Are you living your best?

"I have to live with myself, and so I want to be fit for myself to know;
I want to be able as the days go by to look myself straight in the eye. At the close of the setting sun I don't want to hate myself for things I've done."

GLEE CLUBS PRESENT MUSICAL

The Glee Clubs presented a musical program during the chapel hour on February 19; this was the first program they had given. Those who took part and their selections are as follows:

Piano solo, "Londonderry Air," Marks Underwood; Vocal solo, "Beautiful Dreamer," Bobbie Morgan; Duet, "The Bells of St Mary's," La Verne Horner and Hildred Ruffin; Vocal solo, "The World is Waiting for the Sunrise," Rachel Bissette; Piano solo, "Schubert's 'Serenade,'" Christine Finch; Boys Glee Club, "Anchors Aweigh," and "Marines Jymn."

Jessie Haskins was the accompanist for the vocal selections.
