

Cafeteria Workers Assume Sidelights Of N.Y. Definite Jobs

Specific tasks become the daily schedule of cafeteria workers now the new department makes this operation possible.

As Supervisor, MRS. K. F. LEWIS plans menus, makes weekly reports, and buys products. MRS. E. O. STRICKLAND and MRS. EVERETTE LAMM operate the electric dishwasher.

LOUISE DAVIS sells tickets in the lobby while ANNIE RUTH BROWN and CAROLYN BISSETTE alternate in collecting them.

SERVING PLATES

STELLA JONES, LOUISE HOWELL, DORIS JOHNSON, ANGELA JOHNSON, and MRS. LEWIS serve plates.

BETTY LOU GOFF works at the dish return window.

"It is a pleasure," states SUPERVISOR LEWIS, "to work with my dependable assistants. The colorful and domestic surroundings seem to help everyone concerned. The new equipment simplifies our work and gives me a chance to concentrate on menus.

The New York trip was not without its light touches. Inexperienced in getting around in a big city, we found ourselves heading in the wrong direction twice. We forgot our "lady-like behavior" once and let out a scream at a surprised incident.

After running about two miles to catch the boat to the Statue of Liberty, JIMMY HARRIS, WORTH WALKER and JERRY FERRY were heart broken when they missed it.

Shoes which were "brand new" when leaving Bailey had to be reheeled in New York after miles of tramping in the city for two or three days.

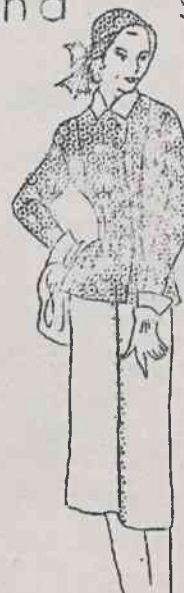
Possibly, the most amusing of all was the pleasure others got out of listening to our Southern drawl and our "you alls." It was a reciprocal amusement, for their Northern pronunciation was as equally fascinating to us. Sometimes it was hard for either to understand the other.

Tanya Glover

LUNCHEON DATE

For a friendly chat while eating, sit with BARBARA NELL LAMM and BETTY LOU JONES.

For
spring dresses
and suits



visit
MEDFORD & STOTT

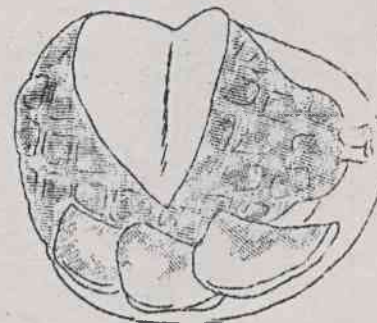
Jrs. Poll Class Symbols

If the juniors heed their motto--One for all; all for one--decided upon this spring along with their class colors and flower, harmony will reign over the class during its remaining days in high school.

A vote of the class proved red and white to be the desired colors and the red rose the accompanying flower.

STOP -----

Throwing away half
of your hams; have
them sliced by ---



SKILLED BUTCHERS

AT

Johnson's Market