

School Caps 1st Prize At Rocky Mount Fair

"Mathematics At Work," the Nash County High School exhibit, won first prize at the Rocky Mount fair last week.

The exhibit won a blue ribbon, added \$170 to the Nash County Treasury of the N. C. E. A., and brought an opportunity to take the exhibit to the State Fair, October 19-23. Miss Edith Farmer was the chairman of the High School Fair Committee for Nash County. As the others on the committee stated that they had no material on hand to exhibit, the entire exhibit came from the mathematics department of Bailey High School.

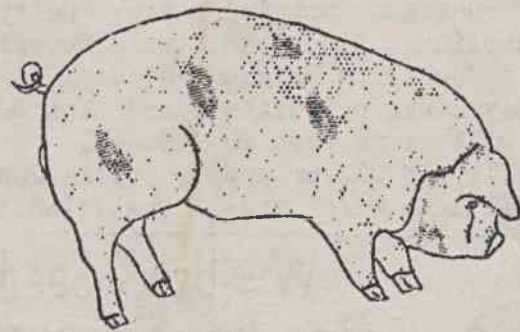
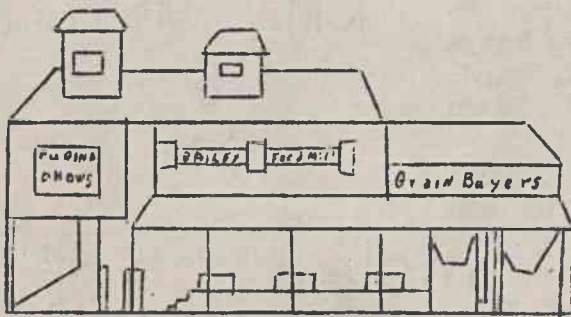
Material for the exhibit was made by students and

past students of Bailey High School. The two stained glass windows and the Christmas tree ornaments were made by students of the general math class; the card table top was designed and painted by Clara Lou Stott and Gene Finch; the solid figures by Corney Boykin; the tractor by Judy Finch and Eunice Perry; the demonstration BOARDS by Rayford Perry and James Paul Stott; and the posters by Carroll Jones, Doris Joyner, Peggy and Billy Liles, Edwin Finch, and Rex Vick.

Those helping put up the winning exhibit were Miss Farmer, Mac Burgess, Katherine Whitley, Ray Fulghum, Sonja Lamm, Charles Rhodes, and Rex Vick.

YOUR HOME TOWN
BAILEY
 Theater
 TUE-10-5
 Gift Night
 Laughing Anne
 FR.-SAT.-10, 8-
 DOUBLE FEATURE
 Silver Lode
 ALSO
 Little Giants
 SUN-MON-10, 10-11
 Living It Up
 SUN-MON-10, 17-18
 Dial M For Murder

We wish to extend thanks in past years for your patronage. Your presence keeps us going. Any suggestions WELCOME



We Buy Corn

We Buy Hogs

A Good Place To Have Your Feed Made

BAILEY FEED MILLS

Phone 2091

Bailey, NC.