

# BULLDOG BARKS

## Athletes of the Month

### JAMES NORTON

James Norton is known by all football fans as the tall, 180 pound left end on the AHS team. James isn't on the defensive unit of the Bulldogs, but on offense he's in there plugging. James has to do a lot of hard blocking, especially on the reverse, to help the backs have a way through the line. Out on passes James will be seen going down the field. For his hard efforts on the football field, we have chosen James as one of our Athletes of the Month.

### RICHARD PECK

A lot of man is seen in the power packed body of Richard Peck, a medium sized right tackle, weighing 160 pounds. Richard exerts tremendous effort in moving the big boys out of the line, even if he isn't a huge boy himself. Richard may be seen out in front on the kickoff team, as he possesses a brilliant amount of speed. For his tremendous contribution to our football team, we salute Richard Peck as the other Athlete of the Month.

## After the Game Is Over

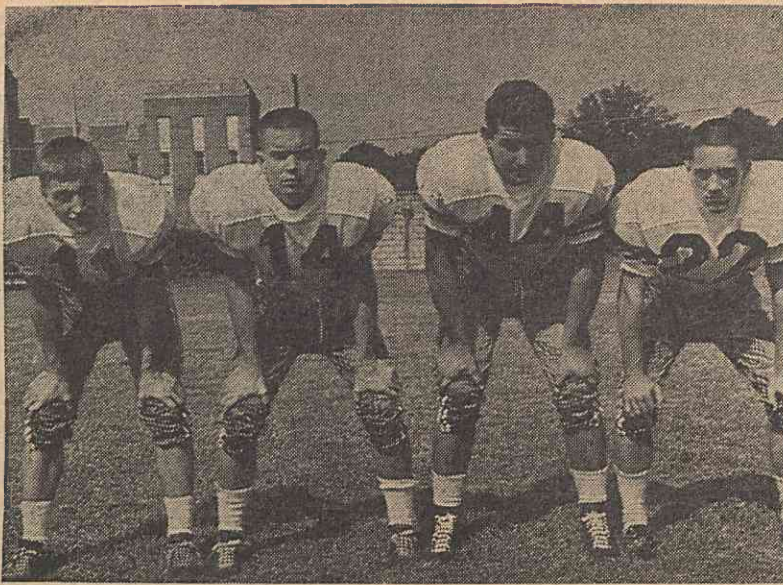
At each of the home games of the football team, before the game starts, the athletic field is all clean and pretty with no paper and trash littering the grounds and bleachers. The grass is green and the field is in good condition.

After the game is over, the same field that was so beautiful before the game is now covered with paper cups, programs, and empty peanut bags. It is not a pretty sight.

Wouldn't it be wonderful if the field could stay beautiful and clean all the time? It could and would if the fans held on to their waste until they could deposit it. Let's try it and see if the field doesn't stay clean.

## B-Team Roster

NAME	PO.	WT.	YR.
Biggers, Stanley	G	124	1
Bowers, Eddie	W.B.	120	1
Brown, Charles	B.B.	135	2
Bunting, Jerrell	E	146	1
Burbage, Billy	G	143	1
Burris, Jimmy	T	168	1
Furr, Kenny	W.B.	94	1
Fusonie, Mike	T	170	1
Greene, Johnny	B.B.	132	1
Hartsell, James	G	124	1
Holt, Jerry	T	173	1
Herrin, Ronnie	G	116	1
Holt, Ronnie	C	116	1
Huneycutt, Kenneth	T	120	2
Huneycutt, Vance	C	120	2
Hunsucker, Larry	W.B.	135	2
Lanbeth, Stanley	E	140	2
Montgomery, Kent	E	127	1
Morgan, Craig	C	125	1
Morton, Craven	T	132	1
Parker, Steve	G	110	2
Pennington, Charles	H.B.	135	2
Stonestreet, Johnny	C	123	2
Still, Terry	H.B.	129	1
Surratt, Charles		130	3
Stubbs, Bill	W.B.	134	1
Thompson, Jimmy	T	170	3
Walser, William	T.B.	132	1
Wilson, Eddie	E	139	1
Wolfe, Mike	B.B.	130	1



**BACKFIELD** — AHS has racked up 370 points this season against their opponents' 21. Playing a big part in this record is the backfield: Roger Smith, Drip Kimrey, Roger Whitley, and Graham Harwood.

## Albemarle Rips Harding By 54-7

Albemarle showed its greatest power and ability in downing an inspired Charlotte Harding team here by a crushing score of 54-7.

Getting the opening kickoff, Harding was unable to move the ball and was forced to punt. Fullback Roger Whitley of Albemarle smashed the line several times, picking up yardage for the Bulldogs. Then Wingback Wade McSwain took an inside reverse for the first Bulldog touchdown. The PAT was off to the left, making the score 6-0 early in the first quarter.

The first half was exciting as the Harding team scored once and the Bulldogs scored four times, the points being 27-7 at the end of the half.

The second period was almost the same, the Bulldogs scoring four times again, with Coach Webb playing his bench.

Scoring in this victory were Fullback Roger Whitley with three, Graham Harwood and Wade McSwain with two each, and Sherrill Williams with one. Larry Mullis converted six times.

## Monroe Rebels Defeated By AHS

Albemarle continued its winning streak by crushing Monroe 48-0 in a SPC battle played at Monroe.

Roger Smith, on his famous inside reverse, ripped the defenses wide open and scampered 46 yards down the field for the first touchdown. Larry Mullis booted true, leaving the score 7-0.

The Bulldogs fought hard all through the game, as the score at halftime was 27-0.

Scoring in this victory were Graham Harwood with one touchdown, Johnny Almond with two, and Whitley, Fusonie, Montgomery, and Roger Smith with one each. Larry Mullis booted six extra points.

## Albemarle Loops Mooresville, 56-7

Albemarle Bulldogs won their fifth straight game by walloping Mooresville 56-7, running up the highest total score for any game played thus far.

It was Dad's Night and fathers of the players watched the game from the Albemarle sidelines, each wearing his son's blue game jersey.

Mooresville was no push-over, holding the Bulldogs to a 7-7 tie at the end of the first quarter.

But Albemarle came roaring back to score three touchdowns on a pass from Harwood to Montgomery, a 65-yard sprint by fullback Roger Whitley, and Harwood's sneak off tackle for another touchdown. Mullis made

his fourth extra point and the score was 28-7 at the halftime.

The second half was more of the same, with Roger Whitley and Roger Smith both scoring in the third running the score up to 45-7 for the Bulldogs. The fourth quarter was left for the second and third strings, with Al Fusonie, second-string fullback, scoring, as did Paul Welch, third-team fullback.

Defensive standouts were Roger Whitley, Tommy Murrell, James Johnson, and Roger Smith, but the highlight of the game was the extra point kicking of Larry Mullis.

## F. & M. COFFEE CO.

*High Rock  
High Grade  
High Quality*

1104 West Main Street  
PHONE YU-2-4514

## M. & W. LOAN CO., Inc.

AUTO FINANCING — REFINANCING  
AUTO LOANS

150 East Main Street Phone YU 2-7011  
Albemarle, N. C. JERRY WAGONER, Mgr. YU 2-3413

310 Montgomery Avenue Phone YU 2-2215

## VOGUE BEAUTY SHOP

— OPERATORS —  
Mrs. Frances Winn Sara Archer J. V. Simpson

## THE DRUG CENTRE

*"Prescription Specialists"*

YOUR REXALL STORE

121 North First Street Phone YU 2-6612

Try The...

## DO-NUT DINETTE

— For the Best —

DO-NUTS—SANDWICHES—PLATE LUNCHES

## Garrison-Dennis Oil Co., Inc.

You Ring, We Bring!

## Phillips 66

PHONE YU 2-1516

## ALBEMARLE OIL COMPANY

*Distributors of Amoco Products*

A Great Name on the Road and Farm

## PECK'S FLORIST

*"Flowers of Distinction"*

PHONE YU 2-2615 ALBEMARLE, N. C.

## ALBEMARLE SAVINGS AND LOAN ASSOCIATION

Albemarle, N. C.

Insured Savings — 3½%

Direct Reduction Loans

OFFICERS

M. M. Palmer, Pres. J. H. Morrow, V.-Pres.  
C. B. Miller, Ex. V.-Pres. O. J. Rogers, Sec.-Treas.

## Spence Motors Inc.

Dodge - Plymouth  
Dodge "Job-Rated" Trucks

— Dependable Used Cars —

211 South Second Street  
Albemarle, N. C.

PHONE:

Office — YU 2-3812  
Parts — YU 2-5913

## LOWDER HARDWARE CO.

G. E. Appliances, Wilson Sporting Goods,  
Building Materials, Paints, Delta Tools

ALBEMARLE, N. C.

*Compliments Of*

## HENRY'S LUNCH

## FCX Farm Machinery Service

*Black Hawk Farm Equipment*

— Universal Milking Machines —

Charlotte Road Dial YU 2-5312

— and —

## STANLY FCX SERVICE

OPEN FORMULA FEED AND FERTILIZER  
— QUALITY SEED —

## ATKIN'S GROCERY

*Quick - Dependable  
Service*

Salisbury Road  
DIAL YU 2-1311

## HOME SAVINGS AND LOAN ASSOCIATION



Albemarle, North Carolina  
PHONE YU 2-1615