

M E R E D I T H H E R A L D

Vol 5 No. 6

Meredith College, Raleigh, NC 27607

October 24, 1989

"Master Plan" Long-term Goals Described

by: Susan Cartrette

Meredith College is preparing a Master Plan. Students here today will only see the initial result, as the goals are "long-term."

Already, progress has been made in the addition of the new road and the security/information gatehouse. The electronic security system has been delayed due to lack of funds and to advances in technology, but

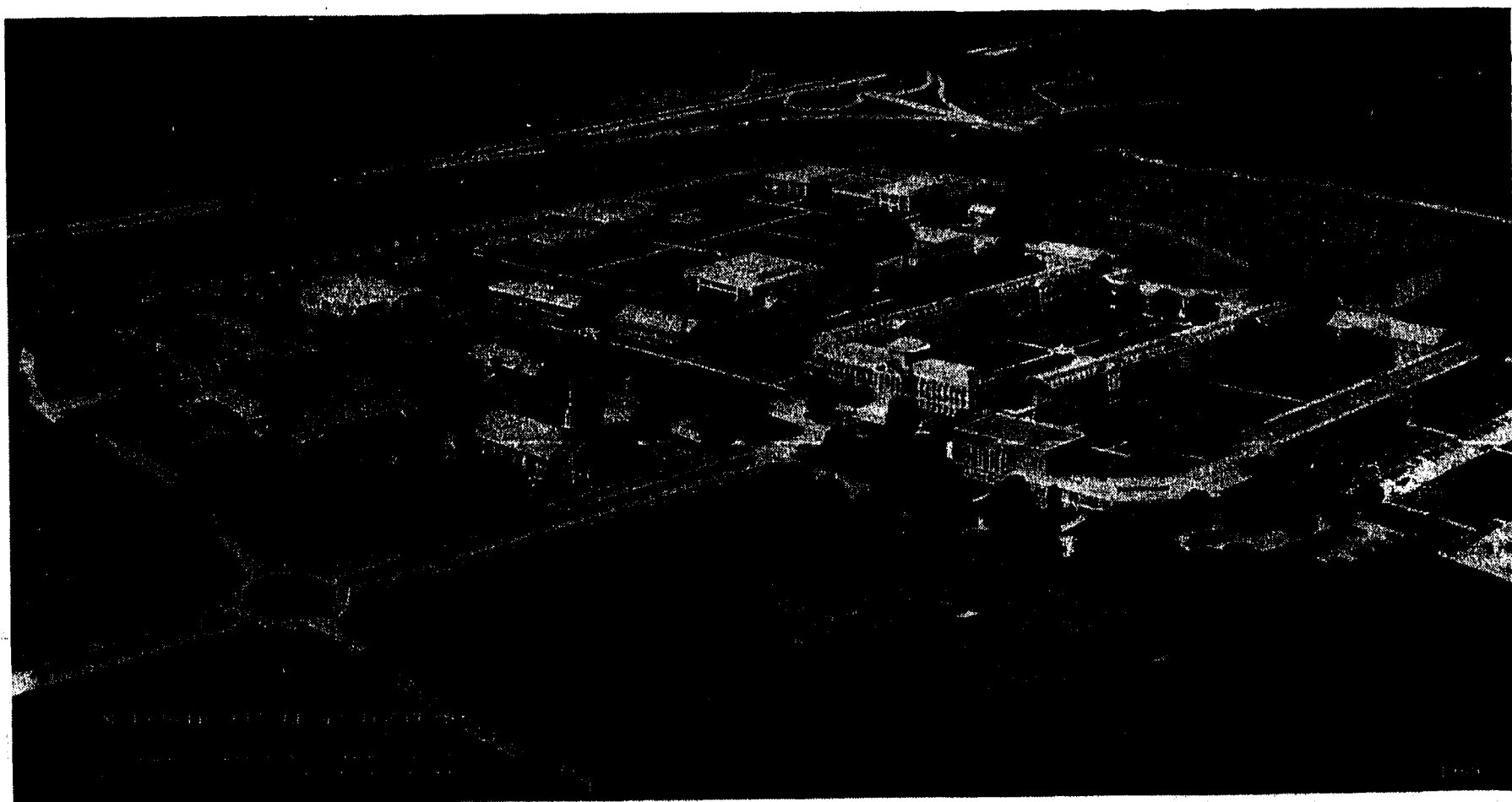
the conduit is in place under the main drive.

Three academic buildings are planned next to the chapel. This construction will help satisfy the need for more faculty offices and specialized classrooms. For example, the specialized classrooms might include larger lecture halls, computer labs and psychology labs. The building closest to the chapel is

currently being targeted for the Education and Psychology Departments. It has a tentative floor plan and will cost at least \$2.2 million.

Eventually, all paved areas will be removed from the interior of the campus as defined by the new road. Commuter parking will move to the beltline side of Cate Center and the new buildings and also to behind

Continued on page 5



The above graphic shows how the campus will look when the "Master Plan" is put in effect.