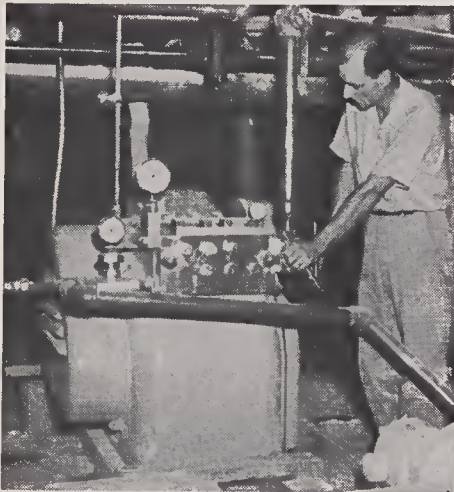


## FOLKS YOU KNOW



Landon Willis, head slasher tender, second shift, at the Sheeting Mill, is shown with the recently installed Manton Gaulin Homogenizer. The new process greatly simplifies the preparation of starch size in the slasher room.

Born in Henry County, Va., Mr. Willis has lived at Draper since 1922. He joined the Company in 1923 in the Sheeting Weave Room. His first job was blowing off looms. He has been connected with slashing operations since 1933. After a short break in service in early 1942, he returned to the Weave Room and remained until he entered the army in December, 1943. As a member of the 29th Infantry Division he participated in the Normandy invasion and in other combat actions. He received the Purple Heart and four battle stars.

Mr. Willis is married to the former Miss Rhugenia Reynolds, Rockingham county native. Mrs. Willis worked in the Sheeting Weave Room during World War II. They have one son, Frank, four years old.

A good cigar is as great a comfort to a man as a good cry is to a woman.

### Absentee Meter

Two-week periods ending  
July 2 and July 23

	Per Cent	
	7-2	7-23
MILL	7-2	7-23
Electric Blanket	3.8	.8
Hosiery	2.4	3.1
Bedspread	4.9	3.4
Towel	4.1	3.6
Central Warehouse	2.9	3.8
Finishing	4.2	4.1
Blanket	4.6	5.1
Rayon	4.6	5.2
Karastan	3.6	5.9
Bleachery	5.1	6.3
Sheeting	8.0	7.7
<b>TOTAL</b>	<b>4.7</b>	<b>5.0</b>

## Awkward Lifting Invites Strain - - - Lift Right

By DR. J. A. SANFORD, Medical Director

Correct lifting is most important in reference to the muscular make-up of human beings.



The body is so built that certain muscles are heavy and strong, capable of handling heavy loads. Other muscles are much weaker and are not intended for stress and strain.

The leg and back muscles belong to the heavy strong type and should be used in lifting. The abdominal muscles, on the other hand, are relatively weak and incapable of heavy strain. These muscles should not be used in lifting.

### BUNDLE OF JOY



Margaret Elizabeth Vernon was six months old Friday, August 4. She was five months old when this picture was made. She is the only child of Mr. and Mrs. Homer C. Vernon, of Leaksville. Daddy is employed at the Bedspread Mill as humidifier man.

The undue strain of improper lifting on these muscles is a most frequent cause of hernia.

The individual who uses the proper muscles in lifting will not have to seek medical advice and care, but improper use of muscles sooner or later means trouble.

### Improvements Made

(Continued from Page One)

A bridge has been built connecting the old and new Warehouses. This is being used until installation of a conveyor has been completed. Then the bridge will be used in trucking "Semi-sealed" cartons of blankets. The new bridge eliminated the somewhat longer trip through the passageway on the second floor which necessitated the use of elevators.

The Sheeting Open Stock Department was moved from the third to the second floor. At the same time pillow case operations were relocated in the Central Warehouse building. A new automatic sheet wrapping machine was placed in the space formerly occupied by pillow case operations in the Bleachery Sewing Room. Complete sheet wrapping operations are now done in the Sewing Room, rather than in the Open Stock Departments.

All pillow case operations take place in the new location in the space formerly occupied by the Print Shop and the carton racks of the Blanket Packing Department.

As result of the improvements, all finishing for blankets, sheets, and pillow cases take place in a straight line through the final packaging.

With the new conveyor in operation, all cartons will be delivered to a spiral chuts on the fifth floor of the old Warehouse. The cartons will go down the chute to the first floor for shipping. Goods not being shipped immediately will be stored on other floors of the Warehouse.

### Borrowed Wit

You can't choose your ancestors, but that's fair enough, they probably wouldn't have chosen you.

If you're in the right argue like a man, if in the wrong, like a woman.

A chip on the shoulder may be a positive sign of wood higher up.

It is much easier to be critical than to be correct.

Progress involves risks; you can't steal second base and keep your foot on first.

FIELDCREST MILL WHISTLE