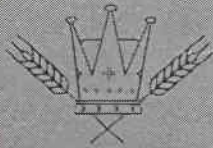


# THE MILL WHISTLE

*Fieldcrest*  
FASHIONS FOR BED AND BATH



*Karastan*  
AMERICA'S FINEST POWER LOOMED RUG

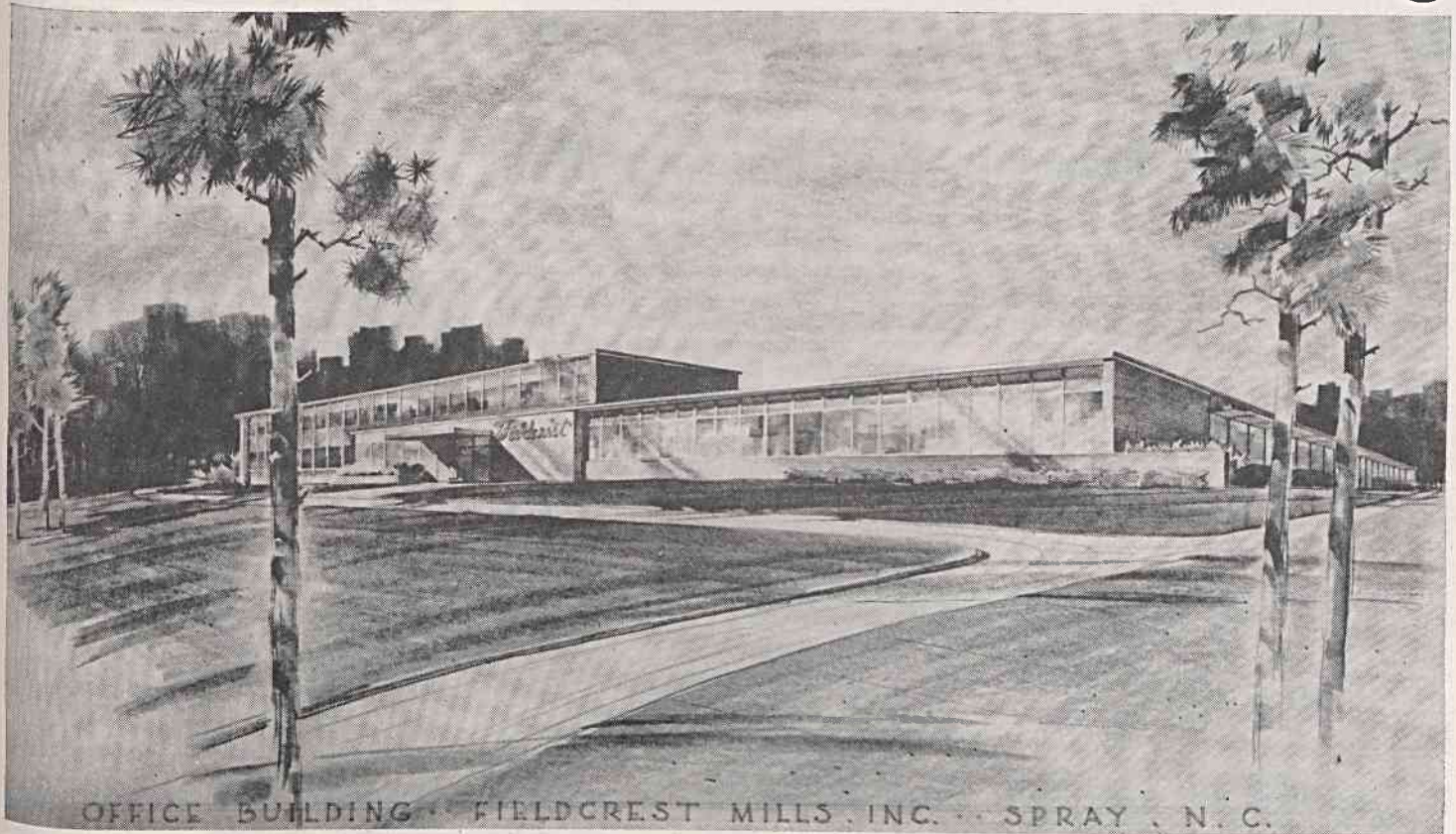
Published by Fieldcrest Mills, Inc. - Plants located in Spray, Draper and Leaksville, N. C. and Fieldale, Va.

VOL. XV

Spray, N. C., Monday, March 4, 1957

NUMBER 17

## Contracts Let For New Office Building



OFFICE BUILDING - FIELDCREST MILLS, INC. - SPRAY, N. C.

### Move Will Release 30,000 Feet of Space Needed for Manufacturing Purposes

Contracts have been let for construction of a new office building for Fieldcrest Mills, Inc. on the south side of Stadium Drive, opposite Morehead Stadium. Work will begin at once and the building is expected to be completed by the end of the year.

President Harold W. Whitcomb, in announcing plans for the building, said the new central office will release 30,000 square feet of space which is badly needed for manufacturing purposes. It will free the Nantucket building for use by the Automatic Blanket Mill and will make available additional manufacturing space where it is needed in the Finishing Mill and Central Warehouse by moving the office personnel from the latter two buildings into the present General office.

Other major advantages to be gained by the central office will be economies and more efficient operation resulting from the consolidation of the company's staff departments and office operations and alleviation of the parking situation which is

now critical for employees of the Finishing Mill and Bleachery, Mr. Whitcomb said.

Total contracts for the building are slightly in excess of \$800,000. Robert and Company Associates of Atlanta, Ga., are the architects and supervising engineers. Contracts were awarded low bidders as follows: general contractor, King-Hunter, Inc., Greensboro; heating and air conditioning, Air Conditioning Corp., Greensboro; electrical, Adams Electric Co., Reidsville; and plumbing, Robb Plumbing and Heating Co., High Point.

The new office building will be more centrally located and more convenient for employees of all of the mills. When the proposed new highways from Snow Supply Co. toward the river and from Bridge street through the Highlands are completed, the building will be almost equidistant from the mills in Draper, Leaksville and Spray.

The building will be modern and fireproof, with the construction of brick, glass and metal panels.

(Continued on page four)

part