



Spencer Trollinger gets cigarettes from machine at Finishing Mill.

Full-line vending in Spray area mills was made possible by installation of modern equipment like this battery of machines at Bedsread Finishing Mill.

VENDING At Your Service

A major improvement in Canteen service at mills in the Spray area has been made through installation of full-line vending at the Bleachery, Finishing Mill, Central Warehouse and Bedsread Finishing Mill.

The latest automatic vending machines have been placed in these mills to dispense fresh-brewed coffee, sandwiches, bottled drinks, milk, a large number of pastry items, candy bars, etc.

The new system provides better service by making the items available to employees at all times. The quality is excellent since the machines are refilled daily with fresh merchandise. To guard against sanitation, the equipment is inspected regularly by the State Board of Health.

Although full-line vending is available only in the Spray area, new machines dispensing fresh-brewed coffee have

been placed in most of the other mills. Within just a short while such machines will be installed in locations that do not now have them.

The Canteen Service recently moved to a new headquarters in the former Acme Printing Co. building. There it maintains an office and has space for storage as well as for a workshop area where vending machines are adjusted or repaired.

Income from the Canteen Service goes into the Fieldcrest Foundation, a non-profit organization for promotion of religious, charitable, scientific, literary and educational causes.

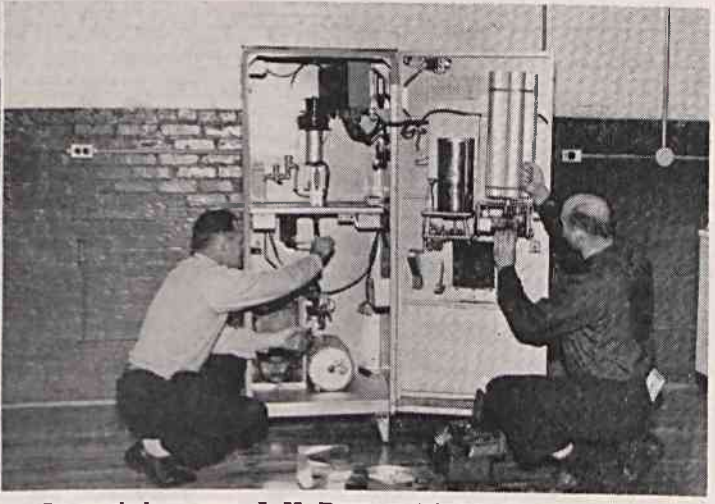
Recent projects include scholarships for employees or children of employees and extensive improvements to recreation facilities at playgrounds throughout the Tri-Cities.



Roy Kasten, service man, refills the pastry vending machine at Bleachery.



At Canteen Office, Elaine Kendrick checks on merchandise received and keeps records on goods issued to the service men.



In workshop area, J. H. Barrow (right), Canteen manager, and R. R. Turner, assistant manager, adjust coffee machine.