

Prospective donors are checked before giving blood. Here, M. L. Whitt, of Karastan, has blood pressure taken by Mrs. Claudia McBride, registered nurse from Morehead Hospital.



Dr. W. W. Matthews checks blood pressure of R. H. Wilson, Central Warehouse, while Red Cross nurse Ellen Robertson takes medical history of W. K. Tuck, Sheeting Mill.

Four Generations



Four generations are shown in the picture above. In the photograph are Jeffrey Hall, 11-month-old son of Mr. and Mrs. Roger Hall; Jeffrey's mother, the former Joan Overby; his grandmother, Lucy Overby, a former employee of the Bleachery; and his great-grandmother, Pearl Earp, a retired employee of the Bleachery. Roger is employed at the Bedspread Mill.

Recognition Is Planned

(Continued from page one)

Scouts and Explorers, adult Scout leaders, committeemen, friends of Scouting and the wives.

The purpose of the meeting is to give recognition to Scouting leaders, new Eagle Scouts and new recipients of religious awards, installation of officers and a report on the Scouting program.

General arrangements for the dinner are being handled by a committee composed of Richmond Roberts, Otis Marlowe, George Aheron, all of Fieldcrest; and Joe Bennett, of Leaksville, Dan River District Scout executive.

Shop Employee Develops New Control Device

William Hill, machinist who has charge of controls on automatic equipment at the Towel Mill, has developed an automatic control which regulates the flow of hot air into the beam drying process in the Beam Dyeing Department.

The new device corrected a troublesome condition in which occasional back pressure interfered with beam drying and sometimes damaged the equipment. The automatic control eliminates the possibility of back pressure and assures higher efficiency in the beam drying operation.

Towel Mill officials have congratulated Mr. Hill on the new development and expressed appreciation for his interest in his job and his ingenuity in working out the improvement.

In commenting on the development, D. E. Simons, Towel Mill superintendent,

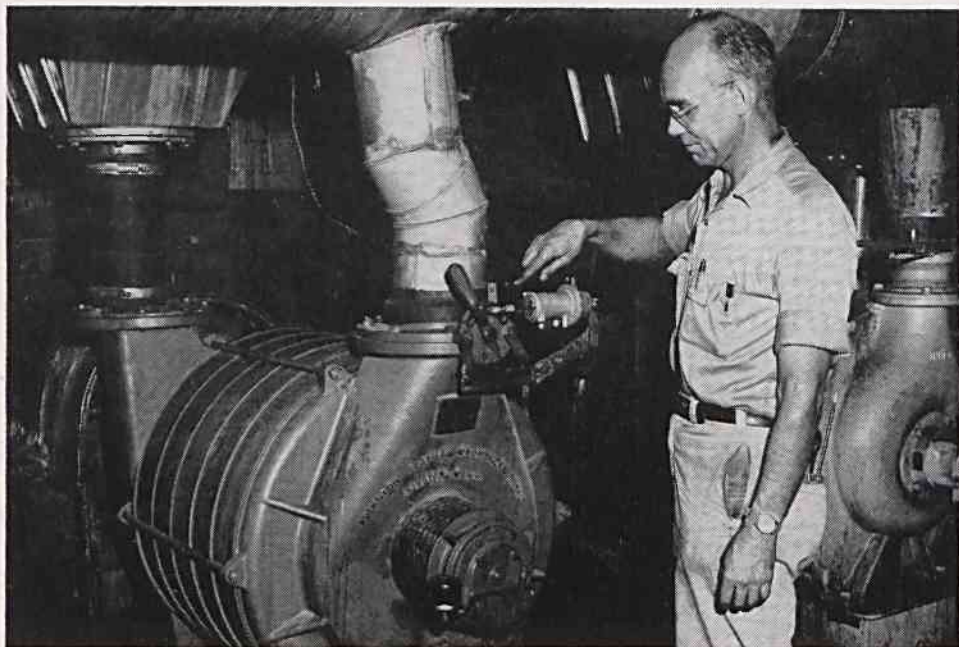
ent, said, "Mr. Hill's initiative in improving this operation is highly commendable and is an illustration of what can be achieved by employees who have interest and enthusiasm in their work. A constant search for new and better ways of doing things is necessary to keep the Towel Mill competitive and strengthen the security of all our jobs."

Flatt and Scruggs

(Continued from page one)

ing the five-string banjo (playing the three-finger style he virtually invented) they have become favorites across the country.

They draw large crowds wherever they appear and have won numerous awards for their rendition of Bluegrass Music.



William Hill, of Towel Mill Plant Service Department, points to automatic control he developed for regulating flow of hot air in beam drying process.