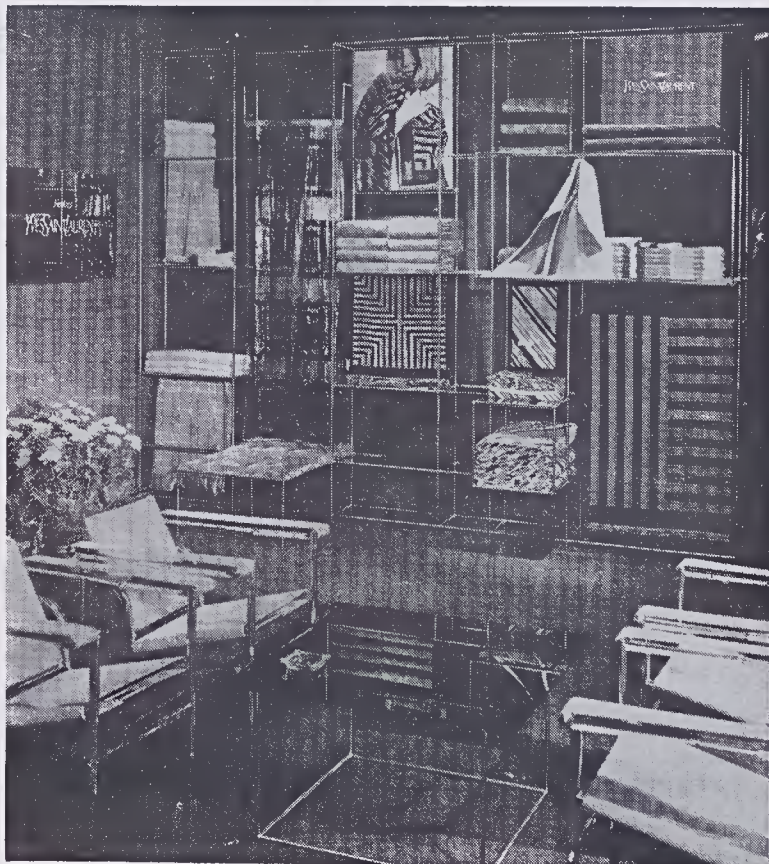




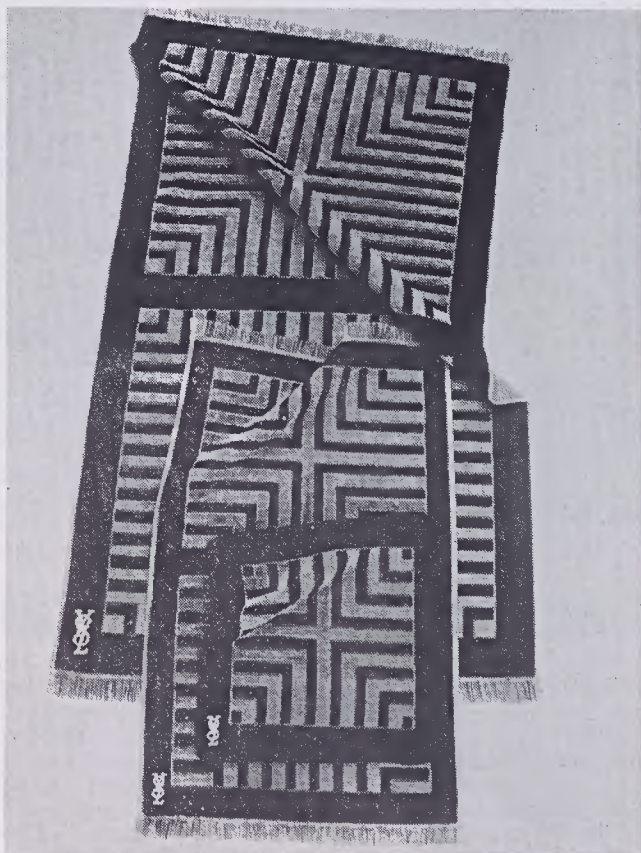
"Discovery" is bold, abstract print towel designed for Fieldcrest. Pattern includes bath, hand towels and washcloths, has designer's full name on a corner.



Another section of our New York Showroom decorated as Yves Saint Laurent boutique. The celebrated designer's addition to Fieldcrest's total-fashion look are available at regular prices.



"Infinity" is Yves Saint Laurent's bold diagonal stripe design for Fieldcrest's newest sheets and pillow cases, with a quilted bedspread that cleverly reverses to a coordinated solid color.



"Dimensions" is a lush new Jacquard towel designed by Yves Saint Laurent. In six color combinations, it can be coordinated with Fieldcrest solid color towels.