

THE MILL WHISTLE

Fieldcrest
COORDINATED FASHIONS
FOR BED AND BATH



Karastan
AMERICA'S FINEST POWER-LOOMED RUG

Vol. 29

Eden, N. C., January 18, 1971

No. 14

Credit Union Pays \$72,694 In Dividends

Total Of \$607,121 Paid Out In Dividends To Members Since Credit Union Began

Members of the Fieldcrest Mills Credit Union have received a total of \$72,694 in dividends for the six months ending December 31, 1970. This makes a total of \$607,121 in dividends paid since the Credit Union was organized in 1958. In comparison, the members received \$35,719 in dividends the last six months of 1969. The amount paid for the first six months of 1970 was \$62,686. The December 31, 1970, dividend was at the rate of 6% per annum. This rate was made effective July 1, 1970, and was the fifth increase in rates since the formation of the Credit Union. The Fieldcrest Mills Credit Union has paid a dividend of at least 4% per annum each six months since it was organized. The first increase was from

4% to 4¼% effective January 1, 1965. It was raised to 4½% a year later and this rate remained until January 1, 1968, when it became 5%. The rate became 5½% after another year and effective July 1, 1970, was increased to the present 6%.

Statements are being distributed to all Credit Union members showing the amount of dividends received, the member's share account, the loan balance, if any, and interest paid. If any member failed to receive his statement, or has any question concerning his account, he should contact the Credit Union office.

There are approximately 9,000 Fieldcrest employees who are members of the Credit Union. These are from nearly all locations and represent a high percentage of those eligible to join. These mem-

bers have the opportunity to enjoy regular savings through payroll deductions and hundreds of members have borrowed from the Credit Union.

The purpose of the Credit Union is to encourage systematic savings; to make low-cost loans to members; and to help members handle their finances in a more adequate manner.

In order to make Credit Union transactions as convenient as possible, the Company cooperates by permitting both savings and loan payments to be handled through payroll deductions.

Employees who are not members of the Credit Union are invited to join. All that is required is for the employee to pay a 25c fee and sign a card authorizing the Company to deduct a specified amount of savings from each paycheck.

N. C. Textile Industry Employs 284,500

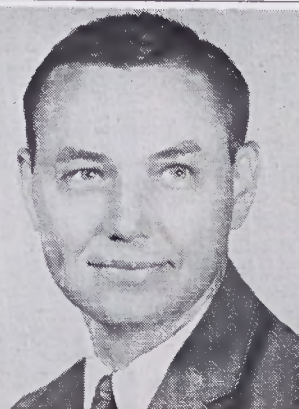
The North Carolina textile industry employed a total of 284,500 persons—both hourly production employees and salaried workers—during the calendar year 1969. These employees made up 28.8 percent of the state's entire industrial work force. The textile payroll for the state during 1969 was \$1,467,147,000. The foregoing figures were announced by the Employment Security Commission in its annual report, "North Carolina Insured Employment and Wage Payments, 1969." The report covers all North Carolina job holders insured under the state's Employment Security law.

The ESC report, the latest available, reveals that the textile payroll was by far the largest, followed in the industrial category by the apparel industry which had 72,644 employees who received \$283,177,553. Apparel manufacturing employees make up 10.1 percent of the industrial work force.

The Employment Security Commission reports that Rockingham County had a total of 9,964 textile jobs in 1969, and that the textile payroll in the county last year reached \$58,652,090.



W. G. HUNNINGS



W. O. STONE



C. L. KAMETCHES

Three New Appointments Announced At Mills

W. G. Hunnings, division vice president-sheet manufacturing, was appointed division vice president-bed fashions manufacturing, effective January 1, and C. L. Kametches, plant manager at the Alexander Sheeting Mill, was appointed general manager-sheet manufacturing.

F. E. Barron, division vice president-bedsread manufacturing; N. F. Young, division vice president-blanket manufacturing; and C. L. Kametches, general manager-sheet manufacturing, will report to Mr. Hunnings.

K. W. Foddrell, plant manager, Sheet Finishing Mill; R. C. Going, plant manager, Draper Sheeting Mill; and C. H. Wiggonton, plant manager, Alexander

Sheeting Mill, will report to Mr. Kametches.

W. O. Stone, division vice president-Fieldale towel manufacturing, was appointed division vice president-bath fashions manufacturing. T. H. Sherrill, division vice president-Columbus towel manufacturing, will report to Mr. Stone. D. E. Simons, plant manager, Fieldale Towel Mill; G. L. Caraway, manager of Fieldale warehousing and customer service; and J. R. Wright, plant manager, Worthville Spinning Mill, will continue to report to Mr. Stone.

Messrs. Hunnings and Stone will report to A. L. Jackson, vice president-domestics manufacturing. Messrs. F. A.

(Continued on Page Three)