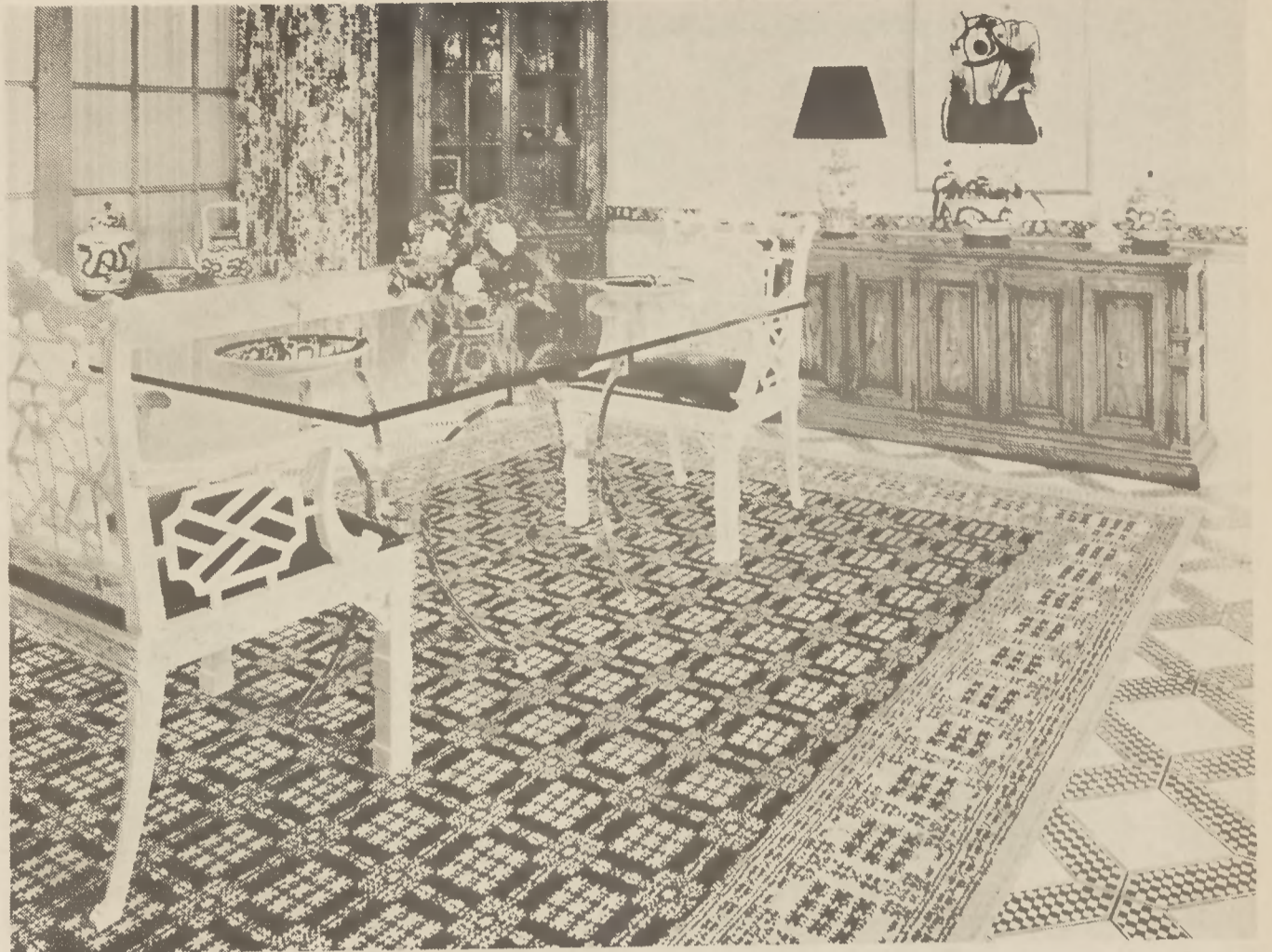




"Eloquence" is deep plush carpet of heavy nylon yarns.



"Pastorale" has Colonial block pattern and multi-color fringe, offers handcrafted look.

Karastan Fall Introductions Are Elegant And Versatile

Pictured on this page are some of the nine new broadloom fashions and two new area rugs introduced by Karastan for fall, 1973.

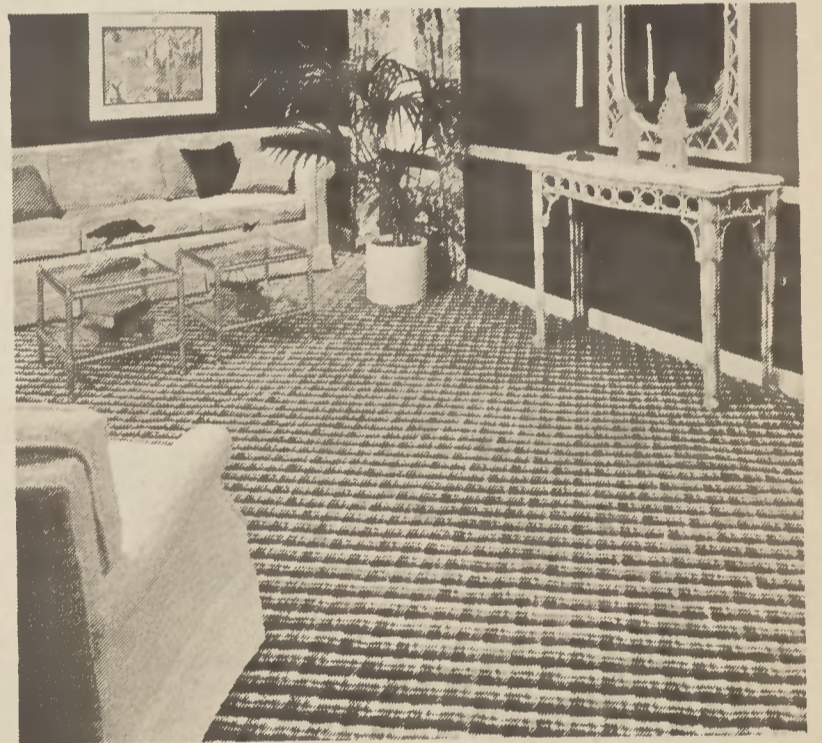
The broadloom designs feature multi-color patterns and brilliant color mixes with elegant self-toned patterns and exciting textured plush surfaces.

The two new area rugs, Pastorale and Maniteau, are strongly influenced by the current Americana trend. This trend is a result of the rapidly growing importance of the 'country look' and American Colonial styling in traditional furniture due to the upcoming Bicentennial.

Five of Karastan's 11 introductions

this fall feature acrylic face yarns. These are Splendau, Marbleau, Libretto, Viveau and Eloquence. Although Karastan has been using acrylic pile fibers in its carpets and rugs for over a decade with excellent results, new and improved types of acrylics now produce a higher more satiny lustre but without the glitter. The result is livelier, brighter color values.

Karastan is also bringing out a group of carpets for heavy duty use in the home or public spaces. These are Highlandia, Progression, Symmetry and Dimensionale. Each of these versatile styles has a distinct personality with unusual design interest.



"Highlandia" is new carpet in striking plaid design.



"Maniteau" borrows American Indian motifs to form a distinctive design of multi-level loop for a handcrafted look. The name "Maniteau" is derived from Shawnee word for "Great Spirit".



"Progression" features an eye-catching chessboard pattern with a design formed by alternating squares of looped yarns and cut pile yarns within bands of four different colors.



Well-suited for this comfortable den is Karastan's "Fortale #194" carpet. Densely woven of rugged, soil-resistant Antron 11 nylon "Fortale #194" features a hexagonal geometric pattern.