

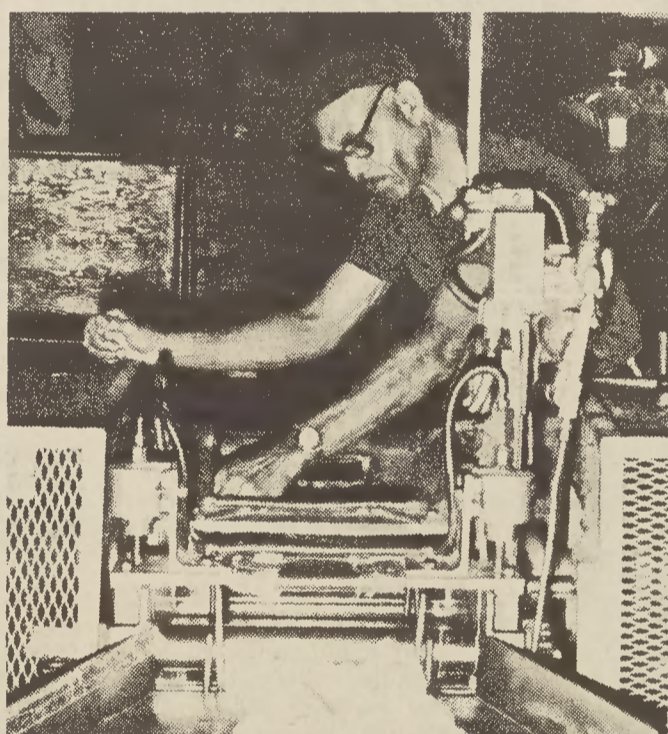
Elwood Fayne is a warper tender in the Warping Department.



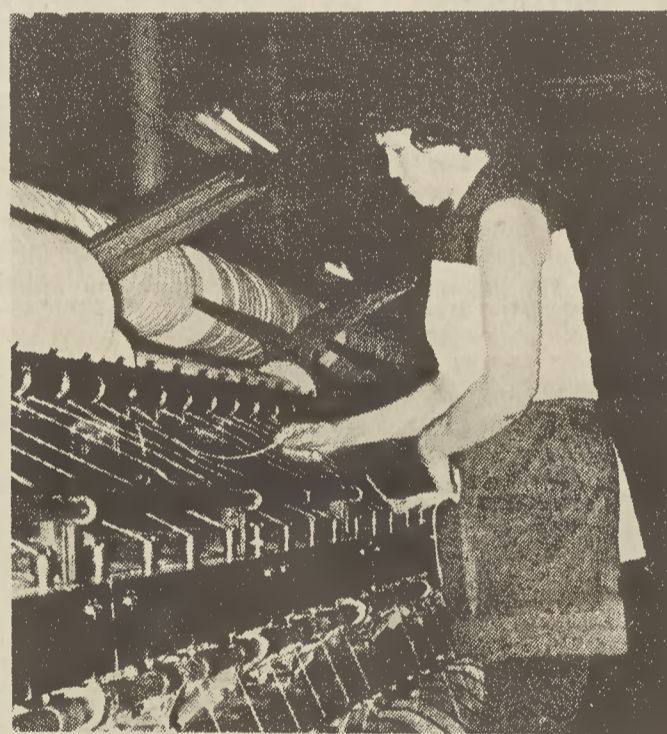
Beulah Lillard is an Abbott winder tender, Yarn Preparation.



Katherine Griffin, spinner, Cotton System spinning.



David Harris, fixer, Woolen System Picking Department.



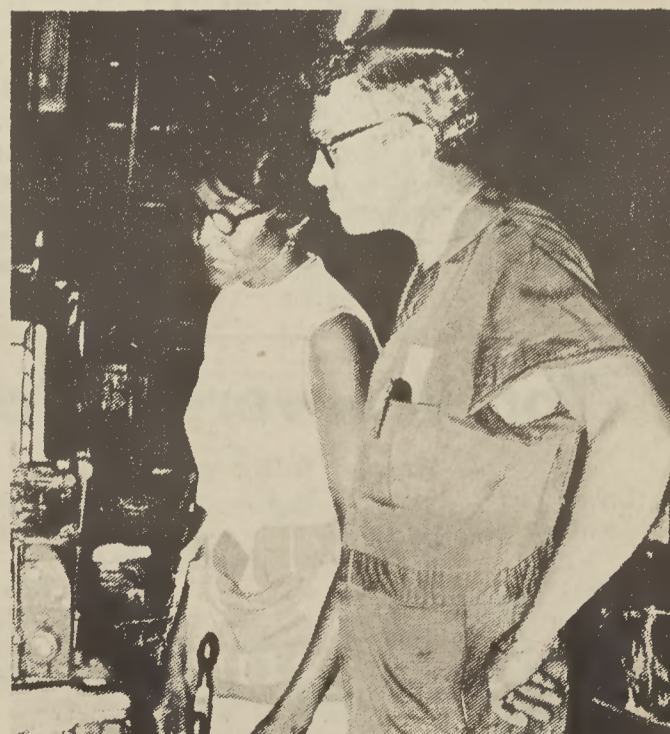
Pauline McBride, spinner, Woolen System Spinning.



Bobby Taylor, tie-in operator, Weaving Department.



Mary Murray, technician in Testing Laboratory.



Lucy Galloway, weaver, Carl James, fixer, Weaving Department.