

Draper Sheeting Mill with Blanket Greige Mill at right

## Know Your Company — Draper Sheeting M

The Draper Sheeting Mill operates some of the most modern equipment to be found in the sheeting industry. In its long history the mill has seen many improvements as the company sought to keep the equipment and products modern and up-to-date.

Built in 1915-16, it was the first new plant built by Marshall Field & Company after Field acquired several mills in the Spray-Draper area that had been built by the B. Frank Mebane interests. The old Spray Bleachery, which bleached and finished the product, was constructed at about the same time. To most of its early employees, the Draper Sheeting Mill was known simply as the "white mill" because of the white sheeting produced or the "new mill", as opposed to the older Blanket Greige Mill which had been acquired earlier by Marshall Field & Company.

The present Draper Sheeting Mill produces high quality combed percale cotton-polyester blend sheet and pillow case material. The complete line embraces the highest fashion sheets and cases produced in the industry. These include a variety of screen prints, solid colors and other fancy items to fit both standard and oversize mattresses.

The rolls of sheeting are shipped to the North Carolina Finishing Company division at Salisbury for bleaching and dyeing. Screen printing of the sheets is done at the Foremost Screen Print Plant, owned and operated by Fieldcrest at Stokesdale. The cutting, sewing and packaging operations are performed at the Sheet Finishing Mill in Eden.

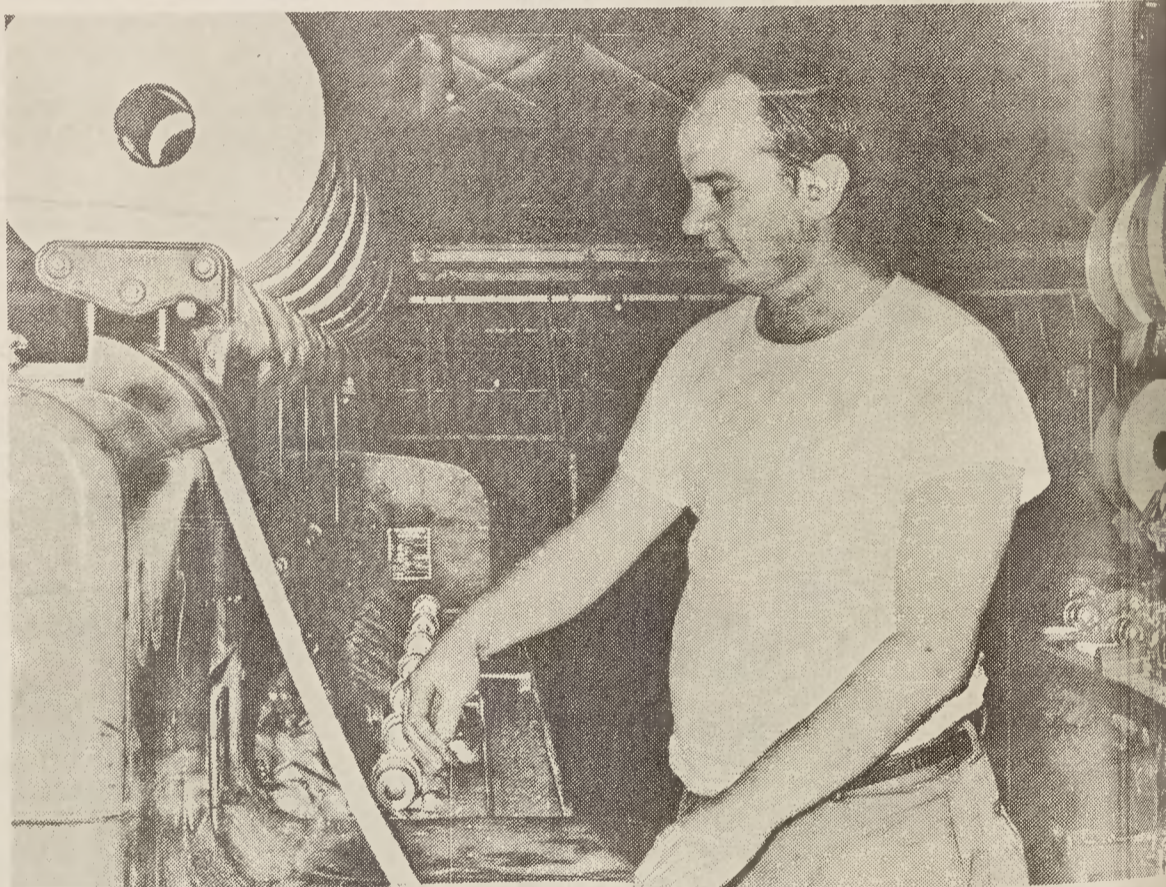
Today the mill occupies 269,392 square feet, operates 44,928 spindles and 909 looms, and gives employment to nearly 500 people. This represents more than a four-fold expansion from the 57,830 square feet, 11,450 spindles and 200 looms when the mill began operations in 1916.

Soon after the mill was built, it became apparent that it would not supply the demand and the following year the plant was doubled. The next large expansion came in 1937 when the sheeting operation in the Nantucket Mill at Spray was consolidated with the Draper Sheeting Mill. The Nantucket employees were transferred to Draper and the equipment was moved there.

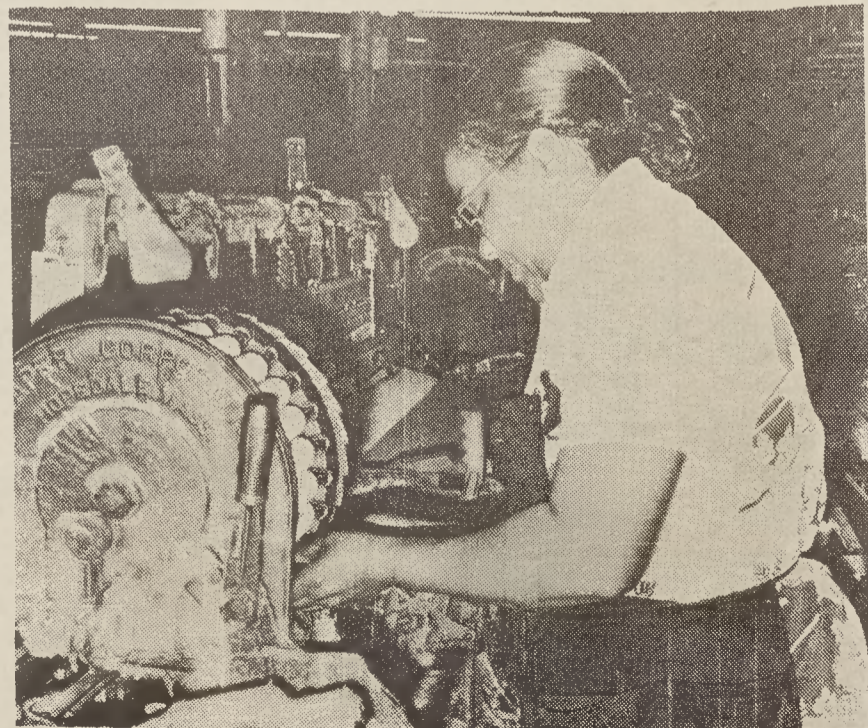
The next large expansion came in 1947 when an addition was built to accommodate new yarn manufacturing facilities. Then in 1960, an addition was built to the second story of the Spinning Department to provide space for additional spinning frames. In more recent years, building additions to house the employee canteens and the utilities equipment have been added adjacent to the manufacturing areas.

For the comfort of employees and for better control of humidity for processing, refrigerated air conditioning was installed in the Carding and Spinning Departments in 1959. The refrigerated air conditioning was extended to the

(Continued on Page Seven)



GARLAND CHURCH — Comber tender, Draper Sheeting Card Room



ELVIRA THOMAS — Battery filler, Weave Room