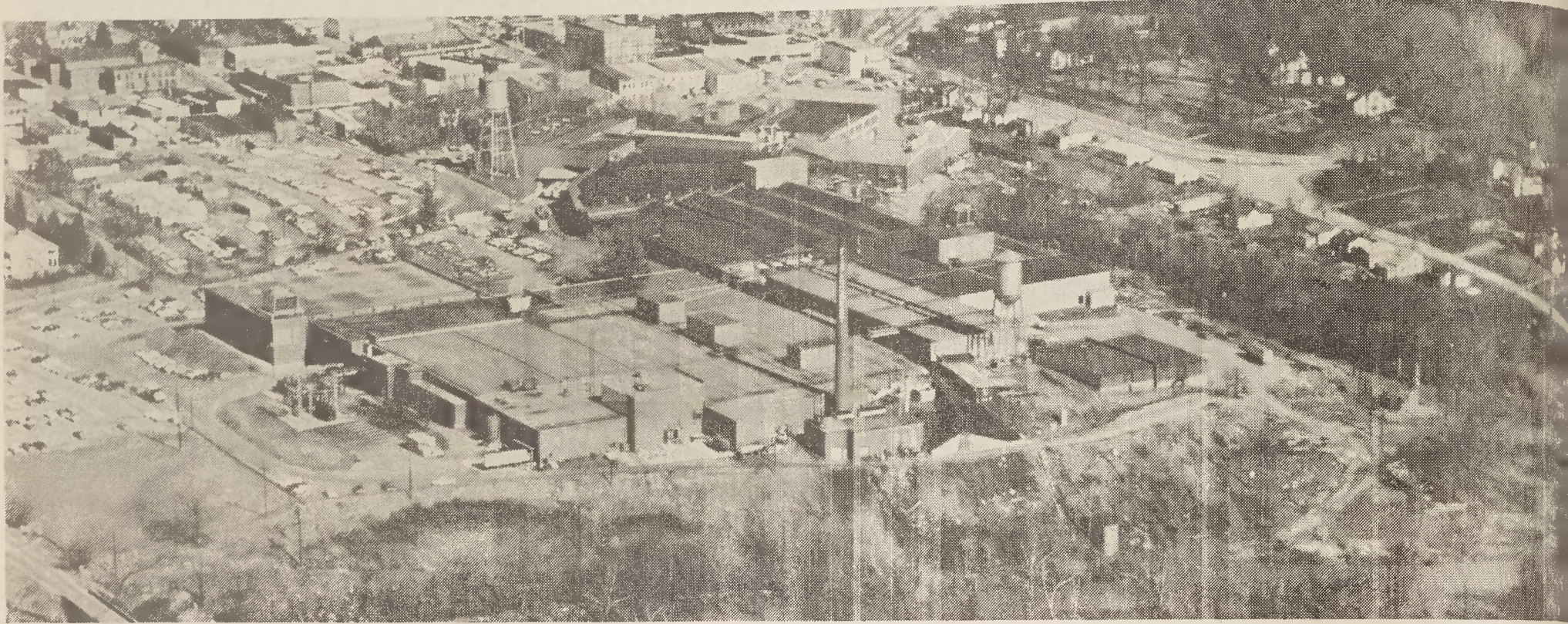


Know Your Company — Bedspread Mill



BEDSPREAD GREIGE MILL with Karastan Rug Mill in right background.

The Bedspread Greige Mill, with the Bedspread Finishing Mill, comprises the largest woven bedspread operation in the world. The division starts with the raw material and turns out the finished, packaged product (cutting, sewing, warehousing, shipping and order and billing operations are performed at the Bedspread Finishing Mill at a different location in Eden).

The Bedspread Greige Mill is completely air conditioned and operates some of the most modern equipment in the industry, particularly in the weaving and yarn preparation processes. Its automated dyehouse is among the most modern to be found anywhere. The looms include cam, dobby, and Jacquard box looms, the latter capable of weaving bedspreads in multiple colors. Draperies to match are woven on the same machines.

Among the mill's best known products are high quality, loop-pile colonial type bedspreads, highly styled printed bedspreads, beautiful matelasse bedspreads and draperies.

The Bedspread Greige Mill grew out of a bedspread operation conducted by

Marshall Field & Company in Zion, Ill., in 1917 and earlier. Since that mill was far removed from the sources of supply of raw materials and employees, Marshall Field & Company decided to move the equipment to Leaksville (now Eden) and thereby consolidate its textile manufacturing activities in North Carolina and Virginia.

A site was selected on the Dan River consisting of 247 acres fronting on the river for over a mile. This acreage together with land already owned by Marshall Field & Company was sufficient for both the mill site and the employees homes that were to be built.

As the first manufacturing processes were not done at Zion, the move to Eden made possible the operation of a complete unit including opening, carding, spinning, weaving and finishing.

The building was completed in 1917 and consisted of 156,998 square feet. Fifty-two looms were moved from Zion and 124 more were bought. The mill had 10,300 spinning spindles and other necessary equipment. There were 257 employees.

Today the Bedspread Greige Mill consists of 288,306 square feet, 13,848 spinning spindles and

290 looms. The mill normally provides employment for approximately 550 persons.

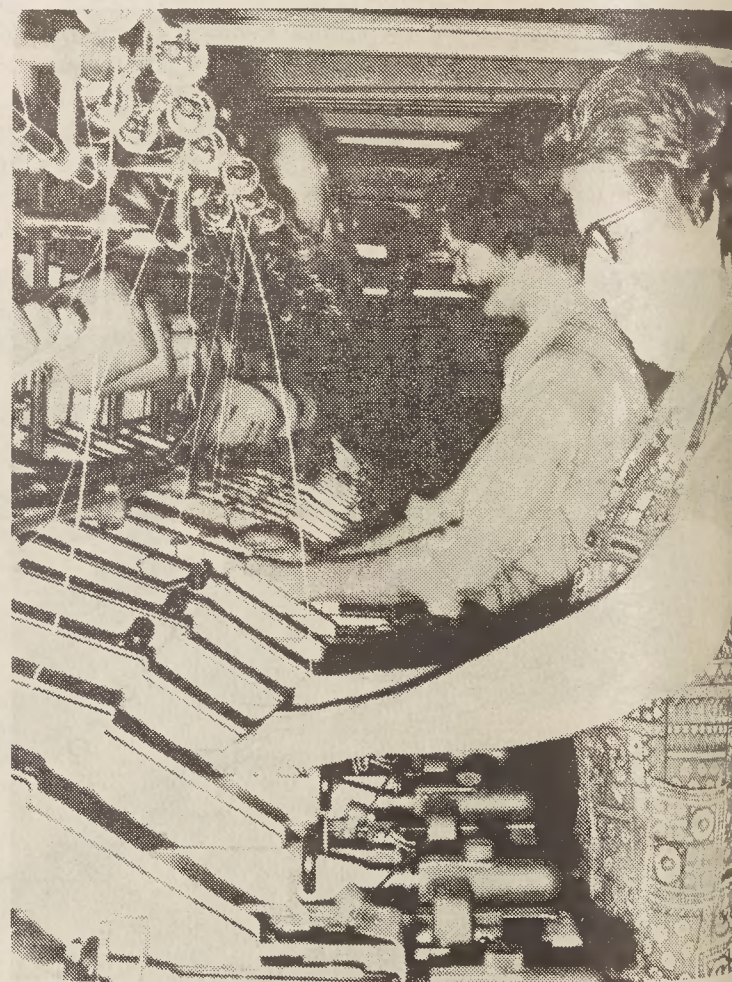
A number of additions have been built to the original mill as the need for more space arose. New machinery has been installed from time to time and the existing equipment modernized for greater efficiency.

In 1937, looms and spinning frames that had been operated in the old Athena Mill in what was called the "Bedspread Mill No. 2" were moved to the main "Bedspread Mill No. 1." A one-bay addition was built onto the carding and spinning section. The bleaching and finishing operations were moved to what is now the Blanket Finishing Mill.

An addition was built to the winding and spooling section in 1945 and additional equipment was installed. In 1952, the mill began changing over looms to make colonial type bedspreads. Sixty-six additional looms were purchased in 1956. Additional dyeing equipment was installed in 1956 and 1961.

In 1962, the opening and picking was modernized, the

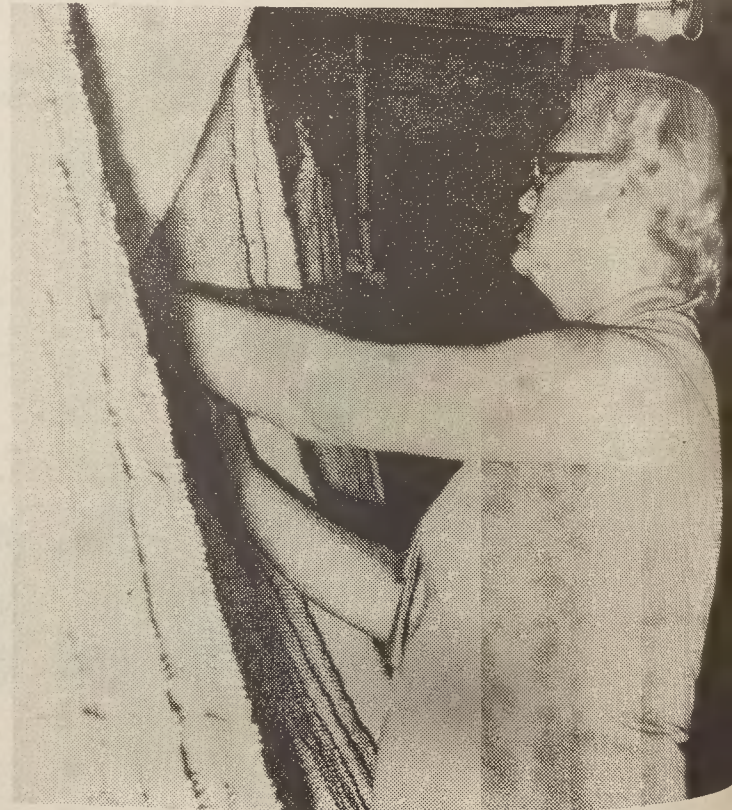
(Continued To Page Eight)



HENRY FAGGE, Fixer, LELIA HOLT, Schweiter Tender — Quilling Department.



JAMES HAIRSTON, Opener Tender, Opening Dept., WILLIE MOYER, Lift Truck Operator, Opening and Picking Dept.



LUCILLE SIMPSON, Inspector, Inspecting Department
THE MILL WH