

Know Your Company—Sheet Finishing Mill

The modern Sheet Finishing Mill, located beyond the south end of New Street at Eden, performs all cutting, sewing, packaging, warehousing, shipping and order and billing operations for sheets. Customer service operations also are handled from the office of this mill.

The Sheet Finishing Mill completes the finishing operations on the high-quality combed percale and muslin polyester-blend sheets and pillow cases manufactured at the Draper Sheeting Mill, Eden, and the Alexander Sheeting Mill, Forest City.

The complete line embraces the highest fashion sheets and cases produced in the industry. These include a wide variety of screen prints, solid colors and other fancy items to fit both standard and oversized mattresses.

The rolls of sheeting made at Eden and Forest City are first shipped to the North Carolina Finishing Company at Salisbury for bleaching and dyeing. Screen printing of the sheets is done at the Foremost Screen Print Plant at Stokesdale. The material is returned to the Sheet Finishing Mill for the finishing and shipping operations.

The material is received in rolls from NCF or Foremost and is stored. When ready to be used, the rolls go to either the pillow case, flat sheet or fitted sheet department.

The sheets are then cut, sewn, packaged and placed in cartons for storage. The cartons are stacked on pallets in high-rise racks in the warehouse. Orders are filled from the racks and the goods are loaded and shipped out.

The Sheet Finishing Mill had its beginning when Marshall Field & Company built the old Spray Bleachery adjoining the American Warehouse (now Blanket Finishing Mill) in 1915-1916. This was at about the same time the Draper Sheeting Mill was starting operations.

At first, all of the sheet finishing operations, including packaging, were performed at the old Bleachery. The cloth finishing was on the first floor with the cutting and sewing on



SHEET FINISHING MILL with Bedsread Finishing Mill adjoining at right

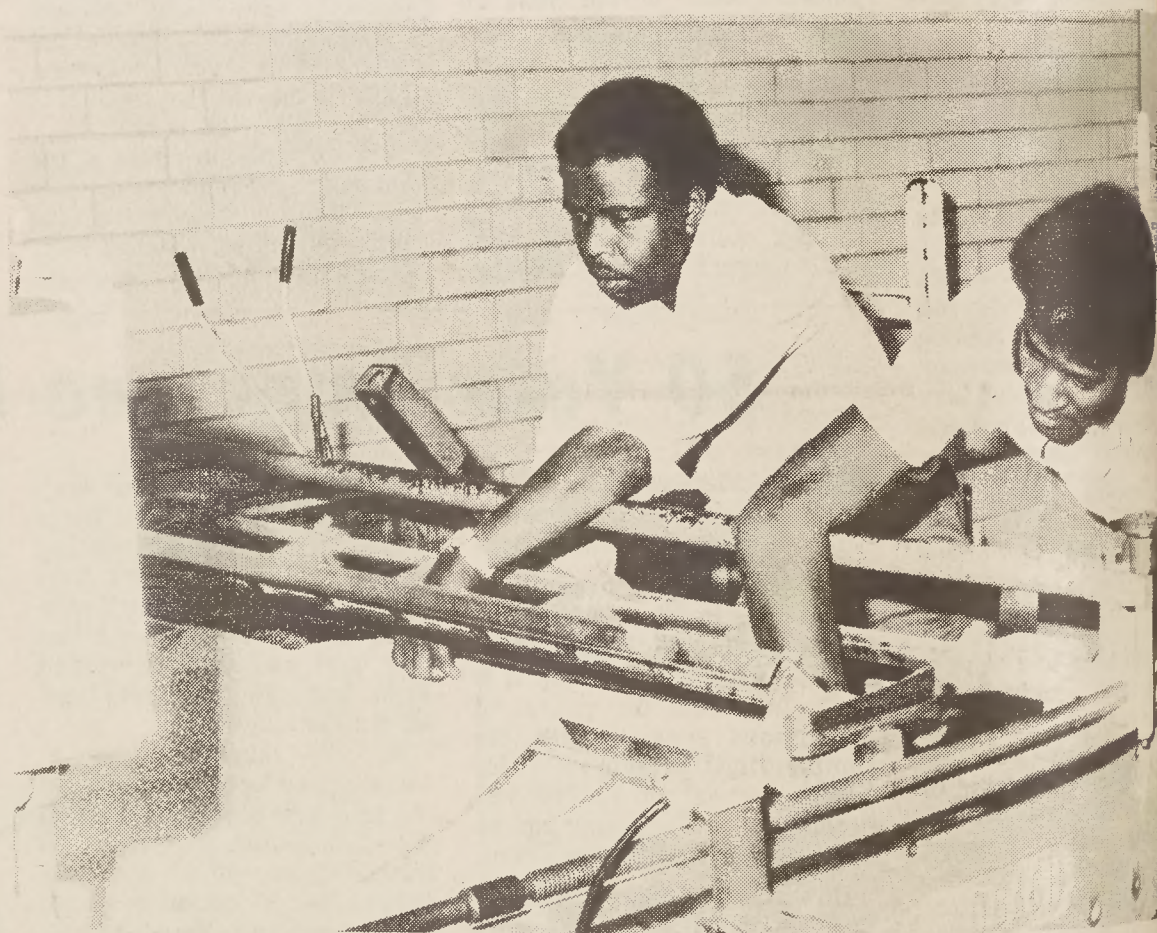
the second floor. The packaging was done in the cutting and sewing department until 1937.

During that year, a four-story addition was completed at the Central Warehouse (now Blanket Warehouse) and the packaging operations were moved there. The order and billing operations were handled by the Central Warehouse Office.

The cloth finishing and the cutting and sewing remained in the old Bleachery location for nearly 50 years. In 1962, the operation was established as the Sheet Finishing Mill and moved to the Nantucket Building in quarters formerly occupied by the old Automatic Blanket Mill.

In April, 1966, the mill was moved into the present building which had been built beyond the south end of New Street. Shortly afterwards, the present Bedsread Finishing Mill was built adjoining the new Sheet Finishing Mill.

In 1974, additions were built to the shipping room and loading dock areas, the office was enlarged and quarters were built



GEORGE PASS (left), CHARLIE HENDERSON, Monfort operators, Cutting and Sewing



MAGDALENE BOWMAN, inspector-checker and spotter, Cutting and Sewing



LORRAINE ELLINGTON, flat sheet sewer, Cutting and Sewing Department
THE MILL W