

re Water!

the State of North Carolina. Each shift, the operator monitors all water pumps, checks regularly to be sure that the proper chemicals in the proper amounts are used and that all filters are clean. The water is tested at regular intervals also.

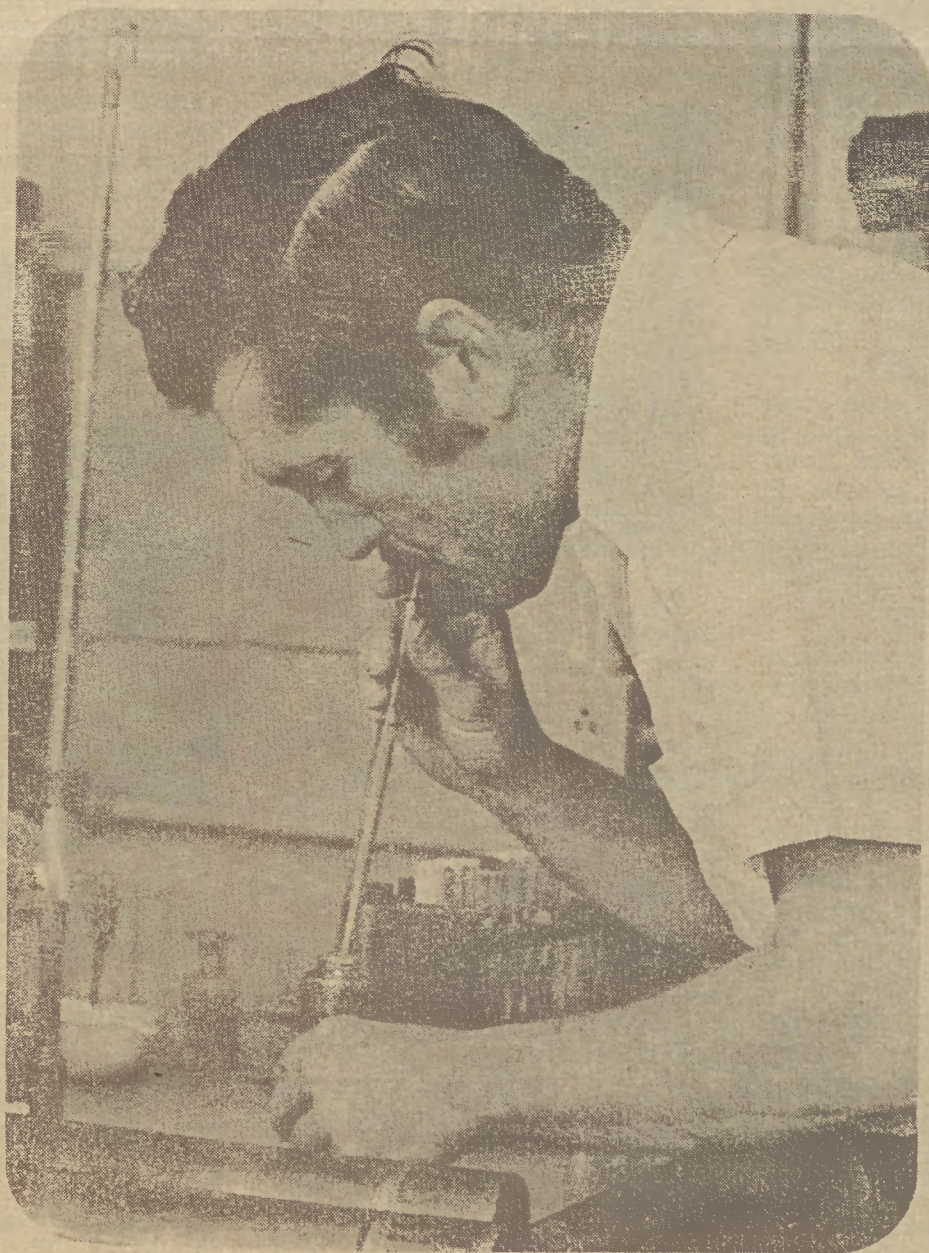
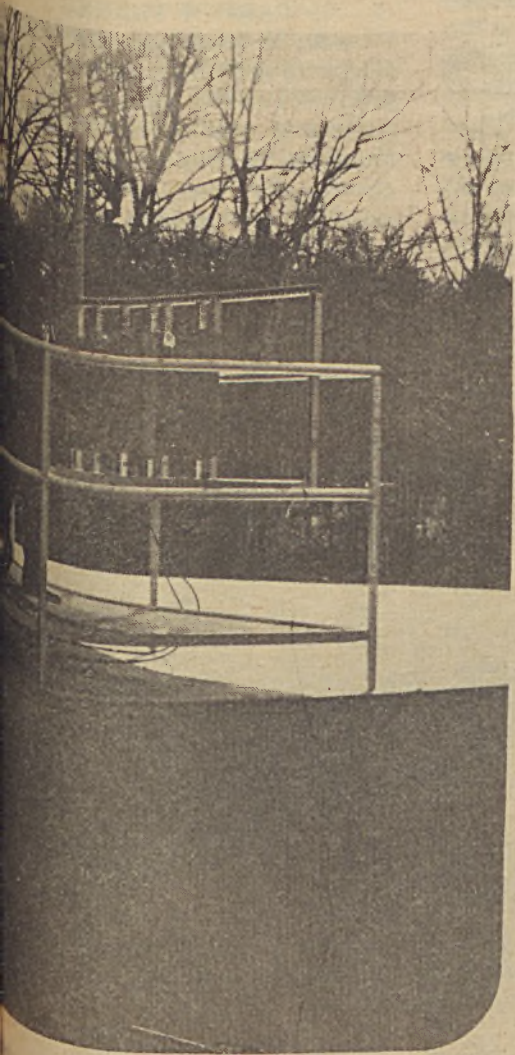
Eden's Central Filter Plant was originally built in 1937. It has been progressively modernized through the years as increasingly sophisticated systems of water treatment were developed and installed.

One of the most modern innovations is the Telemetry System by which telephone lines monitor the levels of all tanks and reservoirs throughout Eden, both for city and Fieldcrest water.

Although there are only four employees in the water filtration operation, they are extremely important to your health, to your community and to the city.



Payton Jeffries, first shift, changes pre-chlorinator charts which show a record of how many pounds of chlorine are added to raw water each day.



Billy Clark, second shift, runs test on finished water.