

# George Humphreys Elected Junior President

## RUBY PARKER IS ELECTED VICE-PRESIDENT OF THE JUNIOR CLASS

George Humphreys was elected president of the 1939-40 Junior class after a Sophomore class meeting on Friday morning, April 28.

Ruby Parker was elected vice-president; Mary Ann Thomas, secretary-treasurer; and Ruth Culler and Joe Given, representatives to the student council. The candidates running for the different offices were: George Humphreys and Gloria Ilderton, president; Ruby Parker, Jo Ingram, and Bill Atkins, vice-president; Charles Medlin and Mary Ann Thomas, secretary-treasurer; and Joe Given, Clark Wilson, Ruth Culler, and Phyllis Strickland, representatives to the student council. Their campaign managers were, respectively: Bill Currie, Jimmy Smith, Garnet Hinshaw, Royster Thurman, Herbert Hodgkin, Margaret Price, Arthur Kaplan, George White, Peggy Teague, Sara Sloan Ray, and Betty Jean Boles.

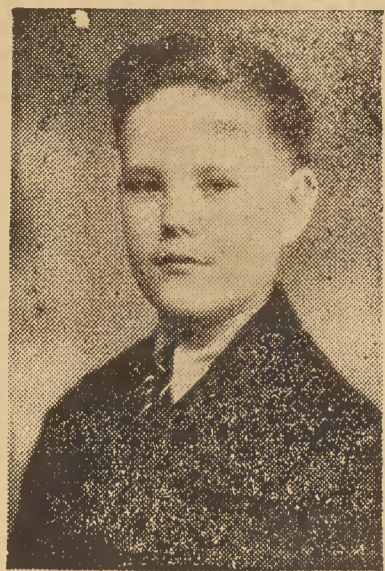
The Junior class will hold a class meeting on May 9, at which time the nominees for the student representatives to the student council will discuss the elective courses for seniors next year. One by and one girl will be chosen from these candidates for Senior representatives to the student council. They are: Gene Thacker, Ruth Koontz, Marie Workman, Rachael Conrad, Arthur Utley, Bill Winders, and Howard Forrest. Their campaign managers are, respectively: Mary Helen Daves, Ruth Etta Leonard, Mavis Walker, Donree Setzer, and Howard Forrest's campaign manager is Willard Midgette. The other two candidates, Arthur Utley and Bill Winders, do not have campaign managers as yet.

### SENIOR PLAY OPENS

(Continued From Page One)

beg Jane to give them their money. At last, her patience gone, Jane informs the family that she is leaving the estate to them, only to find that she loves Ben. Under such circumstances, something must turn up to lead to a happy conclusion. But whether all ends happily or not remains to be seen.

The cast of characters for this drama is composed of: Henry Jordan, Hugh Strickland; Emma, his wife, Kathryn Allen; Nettie,



GEORGE HUMPHREYS



RUBY PARKER

her daughter by a former marriage, Caroline York; Sadie Fellows, once Sadie Jordan, a widow, Elizabeth Welborne; Orin, her son, James Wilson; Ella Jordan, unmarried sister, June Parker; Ben Jordan, Roger Taylor; Judge Bradford, George Shellhorse; Jane Crosby, the maid, Eloise Rankin; Hannah, a servant, Josephine Deal; Jim Jay, deputy sheriff, Carlton Foster; Dr. Curtis, Hoyt Hilton.

The play is under the direction of Miss Maude Burrus, and the production or technical staff is directed by Miss Muriel C. Bulwinkle. An admission of twenty-five and thirty-five cents will be charged to aid in buying the gift of the senior class for the school.

### PUBLIC ADDRESS SYSTEM

(Continued From Page One)

cabinets, which were designed by members of the Art Department, correspond in finish to other furniture in the rooms. Although they are inexpensive, they are sturdy and attractive and, in the opinion of those in charge of the work, they are equal in quality to those usually furnished by the manufacturers of sound equipment.

Through the Activity Fund, speakers for use in the classrooms have been purchased from the Guilford Radio Company of High Point. These will be installed by Mr. John Bivins, Manager of this firm.

The plans do not call for adding, at this time, any extra attachments such as radio or phonograph, although these can be installed at any time. By means of microphone and amplifier now in use, it will be possible to transmit addresses, announcements, and certain types of programs originating in the auditorium to all students without the necessity of an assembly.

### SERVICE AWARD GIVEN

(Continued from page one)

ine Deal, Kermit Albertson, Akers Hutchens, and Kathryn Allen.

The Senior members inducted are: Amy Lou Holmes, Roger Taylor, Virginia Ennis, Margaret Skeen, Doris Byerly, Shirley Welborne, Sara Sears, Serena Riser, Caroline York, Violet Glenn, Majorie Foster, Frances Martin, Earline Loftin, and Myrtle Mowery.

The members of the Junior class are: Bradford Thomas, Paul Morgan, Ella Lou Taylor

Gene Thacker, Dwanda Lee Bissette, Mull Lutz, Thurman Albertson, Arthur Utley, Mary Joe Wilson, and Mary Helen Daves.

## Cecil Prince Edits Final Pointer Issue

Cecil Prince served as editor-in-chief of this, the final issue of The Pointer for the '38-'39 school year.

Prince, a junior, operated with a staff of four, composed of Amy Lou Holmes, news editor; Irene Meekins, editorial editor; Clifton Overcash, sports editor; and Lewis Hayworth, assistant sports editor.

The business staff for this issue, headed by Mr. Edward G. Gibson, is made up of Marie Lilly, Doris Long, Mary Stroupe, Baker Shelton, Margie Pegram, Dot Leach, and Elaine Welborn.

## Leave It To Us

A meeting was held by the members serving on the Junior class grass committee to decide the necessary steps to be taken in order to preserve the beauty of our campus.

### Where Students Are Welcome

ANDERSON W. END DRUG STORE

Phone 2376

### Compliments of

S. H. Kress & Co.

5-10 and 25 Cent Stores

For Quality Shoe Repairing CALL 2333 Ladies' Soles 55c up

N. E. Russell

Sheraton Shoe Repair 300 North Main Street

### DR. NAT WALKER

EYES EXAMINED

GLASSES FITTED

Office Over Walgreen's Drug



## THE BEST BEHAVED SHIRT IN THE WORLD

ARROW HITT'S collar stays crisp and fresh looking all day without a drop of starch.

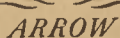
HITT never shrinks out of size. It's Sanforized-Shrunk (fabric shrinkage less than 1%)

Its buttons don't pop off in the laundry—thanks to Arrow's patented button-stay.

Come in today and get some Arrow HITTs. \$2.

Wright-Cline Shop

308 North Main Street



The committee in its discussion recommended to Miss Louise Hunter that a penalty be inflicted upon students who refuse to cooperate with the Juniors in their campaign.

The committee hopes, however, that these steps will not be necessary as the students will take it upon themselves to keep off the grass.

## You've Seen 'Em! PENNEY'S Is The Place To Buy 'Em!



### POLO SHIRTS

Right for sports! Gaily striped with new necks or gaucho collars!

49c

PENNEY'S C. PENNEY COMPANY, Incorporated

## Theatres Program

### CENTER

Friday - Saturday IRENE DUNNE CHARLES BOYER

—in—

"LOVE AFFAIR"

4 DAYS STARTING SUNDAY

JOEL McCREA

BARBARA STANWYCK

—in—

"UNION PACIFIC"

### BROADHURST

Wednesday - Thursday DON AMECHE RITZ BROTHERS

—in—

"Three Musketeers"

Sun. - Mon. - Tues. RICHARD GREENE BASIL RATHBONE

"The Hound Of the Baskervilles"

### Paramount

Friday - Saturday ERROL FLYNN

—in—

"The Dawn Patrol"

Sunday - Monday NELSON EDDY JEANETTE McDONALD

—in—

"SWEETHEARTS"

### CAROLINA

Thursday - Friday RICHARD GREENE SONJA HENIE

—in—

"MY LUCKY STAR"

Sunday - Monday SPENCER TRACY MICKEY ROONEY

—in—

"BOYS TOWN"

### RIALTO

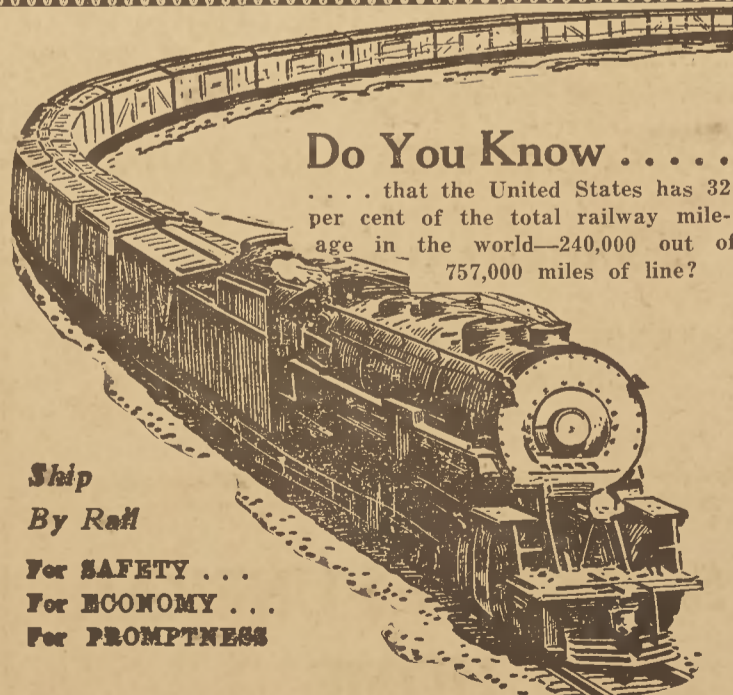
Thursday "TORCHY GETS GETS HER MAN"

With GLENDA FARRELL BARTON McLANE

Sunday - Monday "The Law West Of Tombstone"

With HARRY CAREY JIM HOLT

Do You Know . . . . . that the United States has 32 per cent of the total railway mileage in the world—240,000 out of 757,000 miles of line?



Ship By Rail For SAFETY . . . For ECONOMY . . . For PROMPTNESS

## High Point, Thomasville and Denton Railroad

Phone 4511

Jacobs Avenue