

# THE POINTER

Page Four

Monday, April 21, 1947

No. 9

## Bertrand Shurtleff, Wrestler, To Be Presented By Council

### P.-T. A. MEETING TO BE HELD AT SENIOR HIGH

Miss Ella Stephens Barrett, vice-president of the N. C. Vocational Guidance Association, will be the chief speaker at the P.-T. A. meeting to be held at the local high school Thursday night, April 24. Council members and parents are urged to attend as the topic under discussion is concerned with student registration for next year.

### LOVE AND SPRINGTIME

"Ah, love is so sweet in the springtime . . ."

I certainly agreed with Mr. Romberg's lyric as I sauntered down the school steps one afternoon last week. As it happened, however, I was soon to change my tune.

To all appearances the campus was deserted; it was the sobbing of a pitiful little earthworm that told me I was not alone. He was sitting on the very bottom step, watching his tears roll off and splash mournfully on the concrete.

"How now, friend creeper! Why so damp?"

He looked up. "Can't see as it would make any difference to you."

"All right, if you want to be anti-social. But I'm rather curious to know why one so young is weeping so fluently. It is a wee bit odd, you know, to see an earthworm cry."

"Ah, life is so sad," he said looking at me as though I were an early bird. "When one is not in love, he feels that his existence is not complete, but as soon as he finds a mate, cruel fate steps in and takes her away. Then life is more desolate than ever."

"I'm a little dense. S' don't follow you."

"Suppose you had seen your mate and helpmeet carried in a jar to the biology lab, never to come out again!"

Then he became poetic. Sadly he crooned:

"I just passed by the bug lab,  
I saw my sweetheart there  
All spread out on a wax pan,  
So dead, so gaunt, so bare.  
Sixteen segments were missing,  
Her clitellum she did lack,  
My true love went to the bug lab,  
And she ain't never coming back."

It was very sad . . .

### HODGE-BOSCOE SUB

(Continued from Page 1)

the insertion of doors and windows.

The purpose of the committee in building this set is not only to furnish an appropriate setting for this year's performance, but also to leave to the high scholo a permanent indoor scene for other senior classes in the years to come.

The committee includes the following: Ralston Welch (chairman), Donald Spencer, Leon Greene, Roger Hedrick, Dick Kelam, and Jimmy McGhee.

### BUREAU TO ANALYZE

(Continued from Page 1)

individual can see definitely along which vocational pattern his interests run. Next year any pupil may make use of the interest test in choosing his vocation.

Are wrestling titles honestly earned?

How much of each contest is showmanship?

Are the endings arranged?

These are a few of the many questions that Mr. Bertrand Shurtleff will answer in the last of this year's series of the Southeast School Assemblies, sponsored by our Student Council Association.

Mr. Shurtleff, far from being the tough type that one usually associates with athletics, is a brilliant and witty entertainer who has taught English for over twenty years after majoring in the subject at Brown University.

He presents in this performance an unusual combination of speaking skill, showmanship, excellent and smooth-flowing diction, knowledge of wrestling, physical ability and abounding personality in which his unusual sense of humor predominates.

Using members of the audience, he demonstrates vividly just how professional performers help each other present their entertainment. Picking strangers from the crowd, he swiftly applies to them, or allows them to apply to him, the most brutal holds, explaining rapidly and clearly which are dangerous and which are purely for the mystification and entertainment of the crowd.

Many may think the subject would not appeal to girls and women but some of his most ardent fans are ladies.

Admission for this demonstration, to be given Friday, April 25, is only twenty-five cents.

### DEMOCRACY CLASSES

(Continued on Page 4)

Land Ring as garbage collector and Lib Stone as High Point's first "fire-woman," are looking forward with pleasure to their brief terms of office.



Dr. Dennis H. Cooke, President of Eastern Carolina Teachers' College, will be the main speaker at the Social Standards Conference on May 7.

### FARLOW IS CHOSEN

(Continued from Page 1)

Doris Stone, Mary Lou Stanton, Maxine Farlowe, Carolyn Morris, and Amanda Gekas, representing the two high school home economics clubs. Miss Mary Ella Ingram and Mrs. Lidie P. Horton, instructors, were also present.

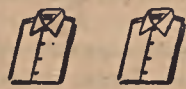
### NOTICE!

This is the last edition of the **POINTER** before our final publication, May 12, which will be the annual senior edition.

In answer to the many questions asked about the change of the day of the delivery of **POINTERS**: It facilitated the situation a great deal for the staff to have the week end to straighten out last minute details and it eliminates the use of extra class time, also it doesn't put The Creative Print Shop in such chaos when they rush through the printing of the **Beacon** and dash on the **POINTER** work. So you see it is a much more convenient arrangement for all concerned.

—Editor.

We carry famous Arrow



& as well as

, and Why

not drop down and us today!



Smart Approach . . .

when asking for that important date is to have on a smooth fitting and comfortable Arrow shirt set off with a dazzling Arrow tie and handkerchief. Y' can't miss chum!

See Your Favorite Arrow Dealer For

**ARROW.—YOUNG AMERICA'S FAVORITE SHIRT**

Ties • Underwear • Handkerchiefs • Sport Shirts

**Wright-Womble-Pitts**

122 — 308 N. Main

Phones 4078 — 3914

### 'KEYS TO CAREERS'

(Continued from Page 1)

College for Teachers in Nashville, Tennessee.

### VARIED PANEL DISCUSSIONS

There will be twenty-three panel groups, some of which are concerned with careers, while others deal with such subjects as "Personality and Charm," "Youth and Crime," and "Peace Relations."

Speakers who have accepted invitations to be present at the conference include the following: Mr. Paul Robinson will speak on music; Misses Ethel F. Burton and Maurine Sykes, on nursing; Mrs. Clyde W. Milser, co-eduette; Mrs. Maurine Peace, cosmetology.

Dr. N. M. Harrison will discuss preparation for college; Mr. John Kalte, salesmanship; Mr. Bruce Thorburn, youth and crime; Dr. George T. Wood, medicine; Mr. T. M. Breedon, aviation; Mr. Edgar H. Hartley, personality and charm; Mr. Thomas W. Sprinkle, law.

Prof. W. F. Bobcock will talk on civil engineering; Prof. E. W. Winkler, on electrical engineering; Mr. Gary Davis, radio; Mr. Don Payne, religious education; the Rev. Paul Hardin, race relations, and Mr. Charles F. Carroll, teaching.

The committee for the confer-

ence is composed of the following members: Ralston Welch, chairman; Rida Ingram, Heywood Washburn, Jackie Meekins, Dolly Albright, Jane Roach, Rodney Borum, Doris Allen, Joanne Sechrist, Wilma Summey, Don Huber, and Miss Bain Johnson, faculty adviser.

### GOOD SCHOOLS STRESSED

(Continued from Page 1)

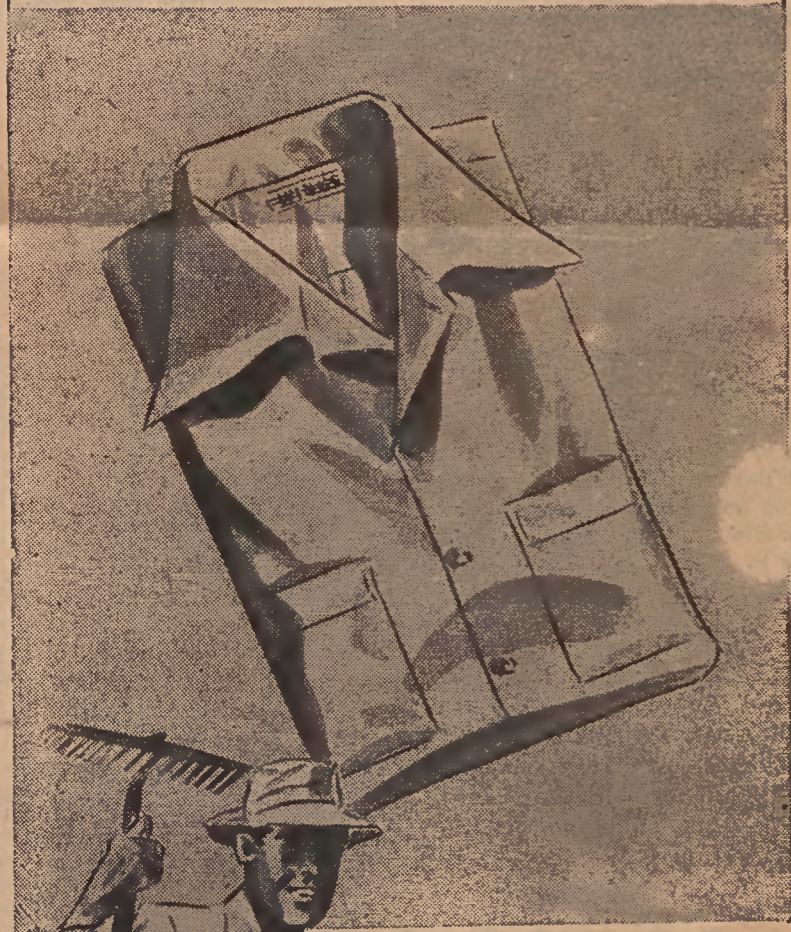
competitors, have improved their educational programs in an effort to expand educational opportunities for their citizens.

In this country, with most state and city treasuries having a surplus, there seems to be no reason, according to the U. S. Chamber of Commerce, for a community to say that it cannot afford to provide the necessary funds to improve the present educational system.

This country is now spending only 1.5% of its income for public and secondary education. Yet the national income has doubled since 1940, at which time the expenditure for education was 2.5%. As the national organization points out, not only do the children of today deserve a better education, but business will also profit from it.

On lazy days enjoy a

**WINGS** SPORT SHIRT



WINGS does a man-sized tailoring job on sport shirts! Makes the collars convertible and the sleeves full length . . . cuts the shoulders full enough . . . turns out shirts that can easily double for office wear. What a team they make with a favorite tweed jacket and slacks! Washable, of course.

**\$2.95 up**

**SHACKELFORD'S**  
MEN'S WEAR  
HIGH POINT, N.C.

308 North Main St.

122 North Main St.