

YES, SING OUR COLLEGE SENTIMENTS.

(Continued from page 1)

is a great truth and it would have marvelous effects on our team and the rooters if we only had a stadium in which to sing it

The very deplorable appearance of our present assembling place for foot ball games is sufficient to dampen any previous stimulation the team and rooters might have had. Then a keen feeling of regret pierces every member of the Faculty and every student when we have great numbers of fans and no place to seat them while the standing accommodation is disagreeable; then realizing we have such a large number of Alumni who have not taken sufficient interest to vanish such conditions. Why not let the song continue to gladden the hearts of 300 students and focus your interest on a real necessity?

Too, the chime clock is chiefly an Alumni project. It has been installed over four years and it is less than half paid for. Relieve President McCrorey of much worry by sending a donation to the Chime Clock Fund.

In the meantime don't forget the struggling staff of undergraduates who published an Annual in 1928 and sold several good Alumni Brothers copies on their credit. Along with President McCrorey we would greatly appreciate your check to cover same.

After all there are other things more distressing than our College Song that need the care and interest of the Alumni.

We are hoping and praying that our Alumni is going to pave the way for us—prospective members of the Alumni—by putting over some necessary programs; but

When our Alumni measures up to that pitch, if the song is then unsatisfactory, we will gladly accept criticisms and changes which are expedient and in keeping with a real college song, as Johnson C. Smith represents, the Smith of today is not the Biddle of yesterday and every student within her sacred walls glory in singing:

"We're J. C. S. U.'s loyal sons,
We stand for truth and right;
We're fellows who are all true blue,
And for old Smith we'll fight.

Chorus

"Proudly we hail thy name—
We'll love you always old S. U.
Smith University—you are our
Guiding star, our light unfailing,
Pride of our loyal hearts.
We'll always give to you, our homage true,
On, onward, ever on, Dear old S. U.

THE Y M C A

By Gilmer T. Franklin

The Y. M. C. A. is having a very prosperous year. The Faculty has given the Y. M. C. A. the franchise over the religious services on the first and third Sunday evenings in each month.

Saturday evening, November 17, we had a very interesting program: Chariman, Mr. C. H. White; Prayer, Mr. W. S. Brinkley; Scripture Reading, Mr. J. L. Powell; Vocal Solo, Mr. W. M. Crawford; Report of the Y. M. C. A. by R. H. Lee: This was the report of the Conference which was held last June at Lincoln Academy, Kings Mountain, N. C. The report was very interesting. It was followed by an instrumental solo by H. M. Fitch.

Another interesting program was held Saturday evening, December 7th. This being our last program this year, the whole student body was enthusiastic over this program: Chair., C. C. De Vane; Prayer, M. L. Wyche; a spirited discourse by T. C. Griffin, subject, "School Spirit;" after which Scripture verses, songs and prayers were offered by the students. There were also interesting talks given by members of the Faculty.

BULLS AND LIVINGSTONE

(Continued from page 2)

lor tightened on his proteges and ordered strenuous intensive drilling.

Prospects for the season are not so bright. It is most of the men's first year on a floor, although they have had previous experience. La Saine seems to be the only one that resembles big time stuff and it will be around him that Coach Taylor will develop his quintet. "Slim" Christian and "Red" Lindsay are the outstanding centers. These moon-fixers will battle it out for first string positions.

Too much cannot be expected of the Bulls this season on the hardwood because knowledge of the game comes from experience and experience is lacking, but from what we know about Randy the Bulls will be represented by a vicious, hard-fighting five in each and every game.

SPORT STATIC

Thanksgiving Day saw Captain Steele don a Smith uniform for the last time. His career on the gridiron is something at which we wonder. He played in nearly all of Smith's foot ball games for the past six years. He was a member of Smith's wonder team of '26. Only ten touchdowns were made against the team and neither of these was made through the line. Steele was a linesman, remember.

We wonder why this fellow Somerset is seldom praised for his great work on the line. Somerset's tackling and blocking was superb. He charged faster than any man on the team; yet he was seldom brought up for praise.

They once said we were to have a Stadium on the campus in time to play the big Easter Classic, but that talk has died out. What has become of the Stadium Committee?? When will construction work on the Stadium begin? Here's hoping this year will not find us making our annual donation for the support of the Charlotte Hornets.

The Bull's 1929 foot ball schedule will probably be published in the next issue of this paper. On account of Howard's connection with the C. I. A. A. Howard may be dropped from the schedule. Rumor has it that Atlanta University and Bluefield Institute will be new comers on the schedule.

Speaking of All-American can you beat this one.

Position	Player	School
	L. E., Epistles of St. Paul.	
	L. T., Roads of Hampton.	
	L. G., Everglades of Florida (A. M.)	
	C., Pines of North Carolina.	
	R. C. Cole, of West Va.	
	R. T., Gates of St. Augustine.	
	R. E., Ship of (Tenn.) State.	
	R. H., Bachelor of Benedict.	
	L. H., Building of Union.	
	F. B., Millions of Morgan.	

COLLEGE GLEANINGS

(Continued from page 1)

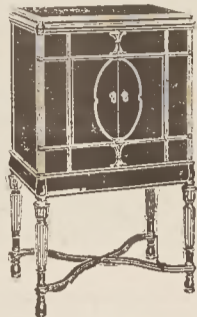
We had always thought that there were about three females to every male in this "wild, wooly" cosmos, but our thoughts were badly shattered some nights ago when we beheld a large number of lonely swans in the role of a wall-hugging proletariat that watched their more fortunate brothers of the nonchalance indulge in the terpsichorean art with the handful of ladies present. Who did ask why it was that the lady clubs invite so few other ladies to their affairs, yet so many men? The survival of the fittest, my boys.

All-Smith Backbiters.

Right-on-Chavis	Powell.
Right-on-Scipio	Walker.
Right-on-Biggs	Byrd
Utility Center	Bryant
Left-on-Professor	Fletcher
Left-on-"Y. W."	Evans
Left-on-Shelby	Whiteman
Quarter-of-Charlotte	Brewer
Half-of Lady's heart	House

THE Y. M. C. A. CAFETERIA
Invites the patronage of every student of Johnson C. Smith University.
T. Jeffers, Mgr.
Y. M. C. A. Room, Biddle Memorial Hall.

PARKER-GARDNER COMPANY
Charlotte, N. C.



Furniture, Carpets and Draperies
Victrolas and Victor Records
Grand and Upright Pianos
Atwater Kent & RCA Radios
Brunswick Talking Machines
Band Instruments
Violins
Ukeleles

DRINK GRADE-OLA

A REAL GRAPE DRINK
ALSO BUFFALO GINGER ALE
PEPSI COLA BOTTLING CO.
Phone: Hem. 1333

Be truthful—tell 'em it's not new—But
McCORKLE CLEANED IT

McCORKLE'S

CLEANERS DYERS

Cash and Carry Stores all over town
For Delivery Service call Hemlock 2600.

JONES' HAIR GROWER BEST ON THE MARKET

Guaranteed to Grow Hair. Price, 50 Cts.
Shampoo Soap, 25 Cts. Complexion Soap, 25 Cts.
THE DIVINE RESIDUE the most wonderful religious book of the age.
Start a CRYSTAL GAZING Club and be the center of attraction among your friends. Write for full information. Send all orders to W. T. Boomer, 1804 Green Street, Portsmouth, Va.

HORACE PATRIDGE CO.

EVERYTHING IN SPORTS
5 North Brevard Street
Charlotte, North Carolina

Athletic Outfitters to Smith University

Half-of-Gastonia Johnson
Full-in-Heights Manley

It was only after the consideration of every male on Smith's campus that this All-Smith Back-Biters Team has been selected. We are sure that there will only be twelve men satisfied with this selection—the eleven picked on this team and the picker. May next season be as resplendent with Back-Biters as the just passed season has been.

**M. J. COLEMAN'S
TEA ROOM**

Welcomes you and offers you good home cooking and courteous service.

Holloway Building
Pettigrew Street,
Durham, N. C.