

The Belles

OF ST. MARY'S

Vol. XXIII, No. 1

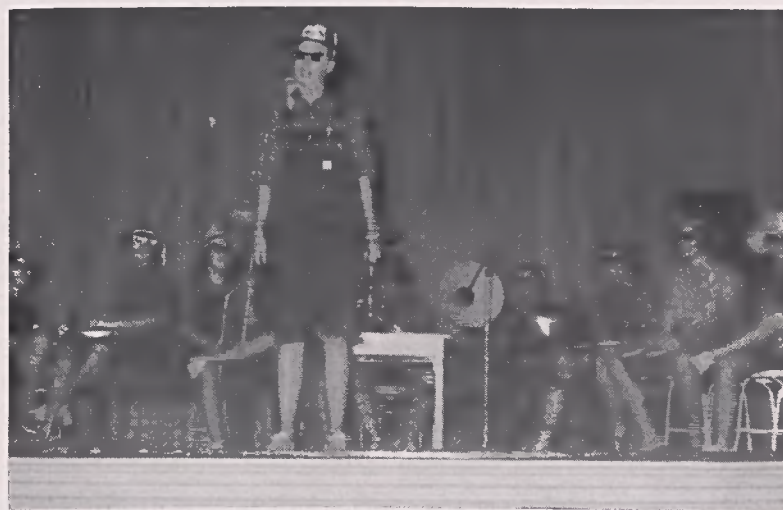
RALEIGH, NORTH CAROLINA

October 2, 1959

ST. MARY'S BEGINS NEW YEAR



Polly Fulkerson, president of Student Government, and Ann Hauser, vice-president, welcome Mary and Jo Shepard on Opening Day at St. Mary's.



Gail Allen introduces a selection by the Cold Cuts at the Talent Show during Orientation Week.

Student Presses Begin To Roll

Under the direction of Nan Dameron the 1959-60 issue of the *Stagecoach* is beginning to take shape. Nan has spent a good deal of her time considering the theme of the annual for this year to be disclosed when the annuals are given out in June.

Nan's assistants were all on the yearbook staff last year. They are Mary Neal Boleh, copy editor; Lucy Milward, sports editor; Lynn Roberson, art editor; Pat McDaniel, photography editor; and Jane Tarlton, dedication.

The Muse, St. Mary's semi-annual literary magazine, will be under the capable direction of Becky Bullock this year. Becky plans to choose a staff in the near future.

The *Belles* staff, headed by Peggy Pegues, has been organized to publish the newspaper for the succeeding fourteen issues.

Latta Heads Leg. Body

Betty Latta, an outstanding senior, has been elected Chairman of the Legislative Body. During her three years here she has participated in many extracurricular activities. The Church plays a very active part in her life, as is shown by her splendid work as a member and past president of the Canterbury Club, a second soprano of the choir for two years, and an Acolyte. She is a member of the Granddaughter's Club and participates on the *Mu* team.

This year Betty is president of the Circle, feature editor of the *Belles*, and is a hall counselor. After two years as secretary of the Legislative Body, she fully understands the importance of her office of chairman for '59-'60. The Legislative Body acts upon student petitions, and it is her duty to preside at these meetings.

Orientation Week Kicks Off New Year

Monday morning all the girls in the freshman, sophomore, junior, and commercial classes arrived. The thrilled faces, the scared ones, the tears, the smiles . . . all went to make an unforgettable day for everyone. Monday was the beginning of a new year, a new experience, and, for some, a new life.

Each girl said her final "adieu." Then they all were organized by Susan Murphy, fire captain, to take part in a successful fire drill.

Dinner in the dining room, welcome from Polly Fulkerson, president of Student Government, and, last of all, hall parties. Last?! Then there was getting to know the roommate or catching up on all the summer happenings.

Tuesday — tests, tests, tests! Also, the junior class and commercial class had a picnic that night in the hut at which time they all had a chance to relax and meet *more* people. Tuesday night, Marjorie Bryan, chief marshal, presented the new girls with a preview of the do's and don't's in clothing for everything from class to concert. To bed and up again----

Wednesday, more tests and finally a freshman-sophomore picnic in the hut. Then there was the "flick" in town. And Frances Douglas! There has never been a sweeter girl! If you thought you were crowded going to the *Devil's Disciple* with her with ten people in the car, you should have ridden "home". There were eighteen.

Thursday — *more* tests! And the arrival of the "exalted" seniors. That night was the senior picnic in the hut followed by the *Eddy Duchin Story* in the auditorium. That was one night you could think of your family, beau, or fabulous summer. Tears? Why, it was that sad movie!

Friday — no tests — just classes. Dr. Stone spoke during chapel. That night the Big Sisters and Little Sisters ate together in the dining room. Then . . . the St. Mary's girls displayed some of their talent. A welcoming chorus line made up of counselors introduced the show. In five years those girls will probably be performing with the Rockettes, under the direction of Tuck Walker. Tim Sirimonkol sang a beautiful song from her native country of Thailand; the song was a description of a waterfall. "Peter" Pam Wright skillfully portrayed the whole Darling family in a monologue from the first act of *Peter Pan*. Betsy Nichols did an acrobatic ballet. Linda Latham, accompanied by Sue Creech, sang two pretty songs. Carol Ann Tadlock, president of Orchesis, danced in her sailor costume to a routine entitled "Sailors Ahoy." Ann Cameron Bowman, a new junior, sang "Oh, What a Beautiful Morning," accompanied by Lynn Roberson. What else to say except that The Cold Cuts "finished" the program with a bang?

. . . . Continued on page 2.

Orchesis Taps New Members

Tuesday in the gym St. Mary's exclusive dance club, Orchesis, scrutinized and carefully examined the dancing of fifty-three hopefuls. The next night during study period, eight of these girls received a knock on their doors. They were summoned by a mask-clad visitor dressed in black leotards with a red sash. Following their traditional candles, Frankie Davis, Pat Exum, Jean

Flanagan, Diane Keyes, Ginger Lang, Margaret Migette, Ann Osterman, and Susan Poe were welcomed at the gym with a secret ceremony. Afterwards, a party was given for these new members by Carol Tadlock, president; Erwin Parrott, secretary; Mrs. Doris Bailey, dancing instructor; and the other members.