

FOTOFAX

BREVARD PLANT
PHOTO PRODUCTS DEPARTMENT



Vol. 11, No. 7 JULY, 1978

Plant Picnic Promises Fun, Food, Fellowship

A day filled with games and sports, rides, music and dancing, food and relaxation has been planned for the annual plant picnic Saturday, August 5, at the Guion House.

Events will get underway at 10 a.m. and continue until 6 p.m. Food lines will open at 11 a.m.

"We hope it will be the best one yet," said Carl Garren, co-chairman of the picnic with Paul Sevenhuysen. "There will be more amusements and more food than ever before."

He and Paul urge all employees and their families to attend the event.

Paul has issued a call for volunteers to help with reception, parking, rides and other duties. He asks each volunteer to work one hour. That assistance will add to the enjoyment of everyone, he said. "And it should be a lot of fun to help."

Amusements for children include the merry-go-round, a combination ride and Space Walk. The Georgia Buggy will take the little ones for rides around the picnic area. For teen-agers, there is the Tempest.

Bingo for persons ages 12 and over will be played in the barn, with special prizes awarded the winners.

A variety of games and athletic contests for all ages has been planned. The schedule of events, times and age limits is printed on page 4.

The fishing truck will make a run to the river each hour for persons who wish to test their skill.

Country and Blue Grass music will be provided by Mark Pruitt and the New Day Country Band of Asheville, and the Apple Pickers of Brevard. Several clogging teams will perform.

Cotton candy, snow cones and soft drinks will be available throughout the day.

Four food lines will open at 11 a.m. in the barn. Hardee's will serve hamburgers, hot dogs and roast beef sandwiches with lettuce, tomato, onion, pickle and other toppings; three soft drink flavors including one diet drink, coffee and ice cream.

All picnickers will want to visit the large tent housing off-the-job safety exhibits. There will be balloons for the children. Posters entered in the safety poster contest will be displayed. Among exhibits will be a collection of safety items available to employees through stores. These items are available at cost and are helpful in home safety.

Much effort is being expended to get the picnic area ready for the hundreds of picnickers expected.

The area is being cleaned; picnic tables are being moved in; sand will be poured around the horse shoe pits; volleyball nets will be set up; the area around the house will be sprayed to eliminate stinging insects.

Working with Paul and Carl on the picnic committee are Kathy Barnett, decorations; Keven Grodzki, Phyllis Shepherd and Jon Sherrill, games; Jimmy Jacobs, announcing; Dana Mason and Ann Whiteside, reception; Orville Mull, fishing and music; Tom Conner, first aid; Fred Sorrells, parking; Bruce Blythe and Roy Middleton, set up; S. S. Gilbert, Jr., safety; Harold Rahn, bingo; Mel Everingham and Dot Osborne, publicity; Terrell Orr, DERA president; Earle Johnson, DERA vice president; and Chan Hubbard, counselor.



Paul Sevenhuysen and Carl Garren

**REMINDER
PLANT PICNIC
AT GUION HOUSE
SATURDAY
AUGUST 5TH
10 A.M. TO 6 P.M.**

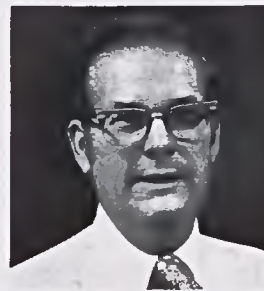
In This Issue

NEW EMPLOYEES	2
PERFECT CAREER	2
CREDIT UNION	3
BUILDING A CABIN	3
MEDICAL NOTES	4



SAFETY AWARD

An Award of Honor has been presented to the Brevard Plant by the National Safety Council for outstanding safety performance. The plant earned the award by operating all of 1977 with no injuries that resulted in lost time. The plant last achieved that record in 1972. Shown above with the plaque are John Golden, left, Plant Manager, and Jim Wert, Area Supervisor, Safety and Health.



Focus:

This issue of Fotofax is devoted to the plant picnic. Various committees have worked hard to make this a day of fun for all. If the weather cooperates, it should be another fine day to enjoy with your families.

I do not want this issue to pass by without making a few comments about our business. Midyear reviews are in progress. If you have not attended an area

business review, you will be scheduled to do so soon. The information being presented is important and should be given an attentive ear. The message is this: (1) The growth rate of medical X-ray screen film has leveled off. Slower growth increases mill costs and intensifies the need for effective cost control and cost reduction programs. (2) The demand for polyester film base remains strong. Overall casting performance must be improved to achieve satisfactory occupancy and yields.

Productivity has also leveled over the past few years. As needs change, it is important to adjust work loads and crew sizes to meet production requirements and improve productivity.

The task before us is clear. Our job is to continue to manufacture products that meet customer needs at the lowest costs.

John H. Golden
John H. Golden
Plant Manager