

The Caromount News

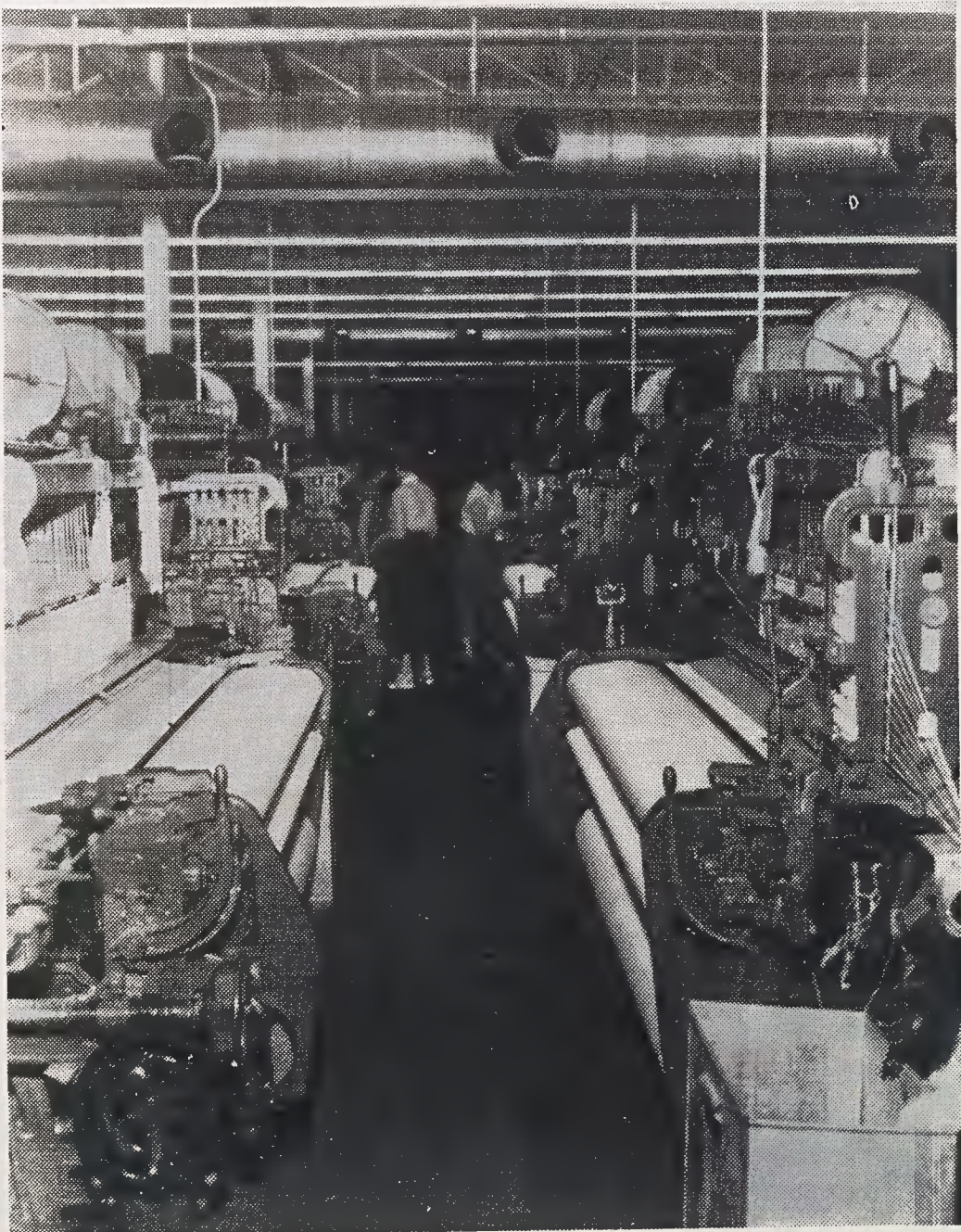
PUBLISHED EACH MONTH BY AND FOR THE EMPLOYEES OF THE WILSON AND CAROMOUNT DIVISIONS

VOL. 13, No. 9

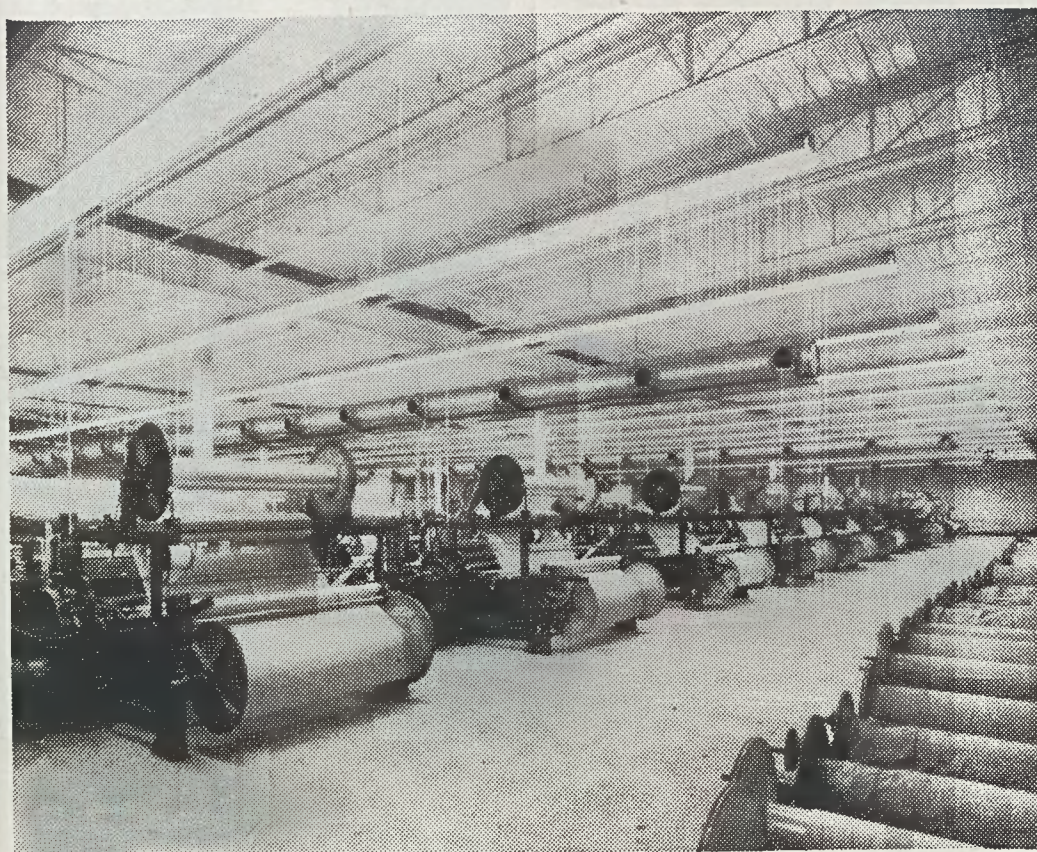
SIDNEY BLUMENTHAL AND CO., INC.

SEPTEMBER, 1955

Wilson Plant Shares In Modernization Plan



Pictured above are new W-3 looms recently installed in the new weaveshed at the Wilson division. These looms are now assigned to the production of 1956 automotive upholstery fabrics.



Above is pictured a part of the new weaveshed at the Wilson division. This weaveshed is equipped with the most modern lighting available and has a new Bahnson Humidifying Air Conditioned system.

We are happy to report in this issue of THE CAROMOUNT NEWS on some of the improvements which the Company has made in our Wilson plant since the first of the year.

A large addition has been made to the plant for additional W-3 looms, Yarn Preparation and warehouse space. The new W-3 weaveshed and Yarn Preparation Department are the finest and most modern in the south, being equipped with the most modern lighting available and a new Bahnson humidifying air conditioning system.

The Company, to provide better facilities and machinery for its employees, has expended a substantial amount in addition to the cost of new buildings. Some of these items are a new slasher, new looms, new jacquard heads and yarn preparation equipment such as beamers, warpers, Schweiter Winder, etc. To provide better facilities and a better flow of materials, all of the equipment in the Yarn Preparation Department was rearranged when the new machinery was moved in. With the added facilities at the Wilson Division, all of the yarn preparation for weaving at Wilson will be done at that plant.

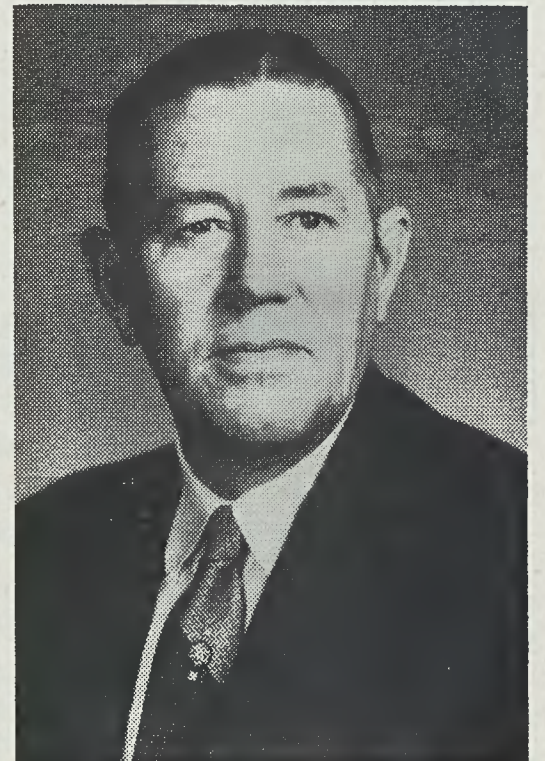
Additional looms have been added in the Plush weaveshed and all of these looms have been painted orange and green, the orange designating all moving parts, in the interest of safety. The toilets have been painted and now the walls around the Weaveshed are in the process of being painted. Products from these weavesheds are shipped all over the country to clothing manufacturers, furniture manufacturers and automotive manufacturers such as Buick, Cadillac, Chevrolet, Chrysler, Ford, Packard and Studebaker.

Two additional platforms have been built to accommodate the increased freight loads arriving and leaving the plant daily and trucking facilities have been greatly increased to transport goods to the Finishing Plant at Rocky Mount.

A new fence has been put up around the Wilson plant and a

(See WILSON Page Four)

Roy Niebling Is New Manufacturing Manager



Roy H. Niebling has been appointed Manufacturing Manager for Sidney Blumenthal & Co., Inc., according to a recent announcement by J. E. Taylor, Executive Vice President.

Mr. Niebling has had 28 years active participation in the textile industry, having started in the Passaic Print Works, Passaic, N. J. He later became superintendent of this plant where his first job was plating down in the bleach house.

Mr. Niebling has also been associated with United Merchants & Manufacturers, Inc., where he was assistant superintendent of their Clearwater, South Carolina, division. He was later Division Superintendent for M. Lowenstein & Sons at Rock Hill, South Carolina and assistant manager of finishing for Dan River Mills

(See NIEBLING Page Two)

E. S. Cobb Retires After 31 Years Service

E. S. Cobb has resigned as Director of Purchases as of October 1, 1955.

Mr. Cobb joined this company in 1924 at its Shelton, Connecticut plant as Purchasing Agent. He was later made Resident Manager of the Valley-Falls-Woonsocket Division and in 1954 was appointed Director of Purchasing.

Mr. Cobb is not ready at this time to announce any future plans.