

Penland News

STUDIO NEWS

Our hardworking clay coordinator, **Greg Gwilt** (who has recently left us to run a business in Florida) has been a persistent and effective advocate for studio needs this year. As a result of his efforts, a number of thanks are in order: to Shimpo-Niedec America for the donation of two beautiful Shimpo throwing wheels; to **Bob Polland** and Lockerbie, Inc., for two beautiful Lockerbie throwing wheels; to **Lois Benson** who gave a computer to the clay coordinator's office; to Highwater Clay for their help with studio needs; to **Joe McArdle** of World Sport Manufacturing for the floor mats in the downstairs studio; and to **Dick Blomberg** who built three excellent warecarts.

Greg also reconfigured the glaze room so that warecarts can go in and out easily. He built four large worktables for the throwing room, installed new tables downstairs as well, and reworked the old coordinator studio as a glaze room. As if that weren't enough, he also did extensive remodeling to Ebner's Trailer where he's been living for the past year. Not bad for a pinch hitter.

Robin Dreyer



Old pros Norm Schulman and Cynthia Bringle testing out the recently donated Shimpo wheels.

Textiles coordinator **Gregg Johnson** is pleased to report the donation, from **Donner Horic**, of a sixty-inch, ten-shaft Swedish countermarch loom. This is a very versatile loom, as big as any we had already.

Finally, our good friend **Oscar Bailey** has made a generous transfer from his darkroom to ours including a cold-head Omega enlarger with a variety of lenses and carriers, along with safelights, timers, easels, contact printers, and other equipment.

STAFF CHANGES

Lynn Wilkinson, our campus facilitator, is leaving Penland (but not the neighborhood) this spring. She will be replaced by **Jane Zietlow**, who brings fifteen-years experience in counseling. Over the past two years, Lynn has dealt with and often prevented numerous crises and conflicts. Her work has also helped to define this job and set a model for its execution. **Bruce Mathis** and **Danny Branton** have left the maintenance crew. Bruce is working at the Avery County Prison and Danny is working in the area. Joining the crew are carpenter **Chuck Nelson** and all-around-skillful-guy **Danny Jarrett**.

Janice Wilber is working as an assistant in the development department; **Laura Loercher** is a full-time salesperson in the gallery. **Leigh Holden** moved on after a summer as coordinator of books, paper, printmaking, and drawing. His job was filled by **Ann Marie Kennedy**. **C.J. Julian** has left his post as photo coordinator to take a job in Tennessee. Ann Marie will also take over his responsibilities for a while.

Assistant Services Coordinator **Melissa Deen** has moved to Boston to study. **Shannon Hilemon** has left our house-keeping staff (she has her own cleaning business). Shannon was replaced by **Rose Conley** (one of the Conley Ridge Conleys). **Darryl Maleike** has left the kitchen for work in the Everglades. **Hugh Patrick**, our former kitchen steward, is now living in Durham (leaving someone with a big kilt to fill).

Core students **Troy Hines**, **Caverly Morgan**, and **Daniel Price** have all finished their time at Penland and scat-

tered to the four winds. Troy is working in Asheville for a little while; Caverly is spending time at a Zen monastery in California; Daniel has just been accepted into the sculpture program at Tulane University. We will miss them all.

Joining the Core are metalsmith **John Andrew**; **Rebecca Carter**, who has worked in photography and painting, but plans to experiment; **Eleanor Gould**, who may try every studio; and blacksmith **Zach Noble**. We welcome them.

RESIDENTS

Penland is happy to welcome two new Residents in 1999.

Susie Ganch is a jeweler who has been a studio assistant in several classes and served a lot of coffee in the coffee house last summer. She has set up her studio (quickly) and is preparing for a few weeks of guest teaching at University of WI/Madison. **Eileen Wallace** was Penland's books and paper coordinator and publications designer for three years. Her initial plan for her Penland residency (which begins in June) is to continue producing handmade books and boxes and also to develop a line of letterpress-

printed decorative papers.

Leaving the residency are **Cynthia Stone** and **Shawn Ireland**. Cynthia's upcoming shows include the Baltimore Wholesale Show, the Columbus Art Show, the Dogwood Festival in Jacksonville, and the Center City Fest in Charlotte. Shawn just returned from the ACC Baltimore and Atlanta shows. He's currently looking for a homeplace in the neighborhood. (The photo on page 2 had something to do with Shawn's going away party, although we're not quite sure what.)

Junichiro Baba (see page 4) shared a two-person show at Gallery W.D.O. (Charlotte) with Hoss Haley, and he's preparing for a show at the Earbille Opera House in upstate New York and one in Tampa to coincide with the Glass Arts Society conference. **Sondra Dorn** had a recent installation at the Charlotte airport, a two person show at the University of GA/Athens, and she was just accepted into the Southern Highlands Handicraft Guild.

Hoss Haley had a recent show at Gallery W.D.O. (with Jun Baba), he was a demonstrator at the National Ornamental Metals Museum, and the school has been keeping him busy designing and building railings for Heavens Above, the Pines, and the Northlight steps (see page 6); he's also been a consultant on the design of the new iron studio (see page 6 again). One of Hoss's sculptures purchased from the W.D.O. exhibition was donated to the Mint Museum of Craft + Design in Charlotte, NC. **Michael Kline** donated a piece to the Los Angeles County Museum of Art, he had an exhibition at the St. Louis Craft Alliance, and he's been selling well from his studio at the Barns.

Louise Radochonski has upcoming exhibitions at the Williman King Art Center in Abingdon, VA, the Blue Spiral Gallery in Asheville, NC, Gallery 225 in Raleigh, NC, and she will be teaching a class in figurative sculpture this fall at the Odyssey Clay Center in Asheville.

RESIDENCY OPENINGS

There will be one opening in the Residency in 2000. The studio is a large space, downstairs in the Barns. The slab floor makes it particularly suitable for wood, iron, and sculpture. The deadline for applications is October 30, 1999. Call Dana Moore for more information.

SHOWS, AWARD, ETC.

Many Penland artists participated in a show at the Folk Arts Center of the Southern Highland Craft Guild this spring. Penland shared the center's exhibition space with the graduating class from the Haywood Community College Professional Crafts Program. The show featured work by Core students, studio coordinators, and Penland Residents.

Thanks to **Stacey Lane**, who coordinated Penland's participation; **Kristi Pfeffer** and **Hoss Haley** who designed the invitation; **Catharine Muerdter** and **Bob Gibson** who organized on the Haywood end (Catharine is also a Penland Trustee); and **Andrew Glasgow** and **Laurey Faye Long** of the Folk Arts Center. And we can't forget **Pearl Grindstaff** who baked about 400 brownies for the opening. The Penland portion of the show will travel to Atlanta where it will be seen at the Barbara Archer Gallery from May 7 to June 18.

Cynthia Bringle will be honored by an upcoming show at the Folk Art Center. Titled *A Fiery Influence*, the show will feature a seventy-five piece retrospective of Cynthia's work along with pieces from over twenty potters influenced or taught by her; most of them have been Penland instructors. The show opens May 16 and runs through June 27.

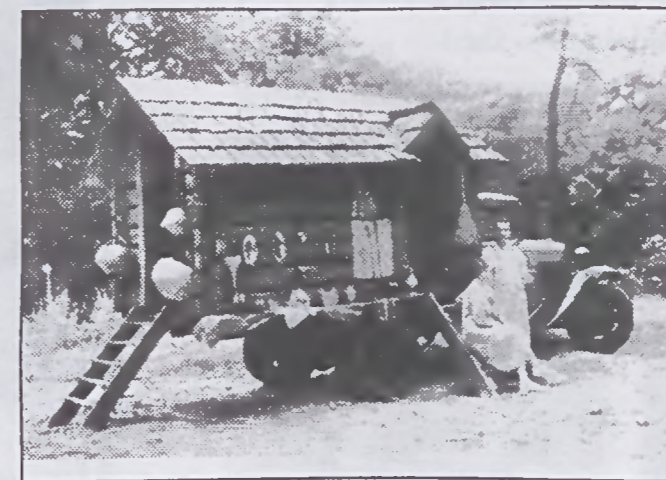
70TH BIRTHDAY REUNION

This year marks the 70th birthday of Penland School. We're saving the big festivities for our diamond anniversary in five years, but Penland Trustee **Linda Darty** thought 1999 would be the appropriate moment to gather some old Penland hands for a weekend sharing stories and photographs and helping build the collection of Penland's archive, which will be named in honor of our late friend **Jane Kessler**.

Linda and a volunteer committee have put together a weekend reunion which will take place on May 15 and 16 at Penland. There are a number of activities planned, including craft workshops, tours, and an exhibition of historic material. But the most important part of the weekend will be the collection of material for the archive, and recording—on tape and video—of oral history. We will report in the next issue.

TRUCK NEEDED

Penland is looking for a 1930 AA Ford truck. This model was



Lucy Morgan, Toni Ford, log cabin, AA Ford truck.

used to haul a tiny log cabin to the 1933 Chicago Worlds Fair—a showroom for products made by the Penland Weavers and Potters. We are planning an exhibition space for the cabin and other historical material and would love to display it on the same model truck. Please contact Development Director Erika Sanger if you have a lead.