

CHICAGO BODY ASKS END OF NEGRO BIAS IN MEDICAL FIELD

CHICAGO (AP)—Resolutions calling for the end of bias in the admittance of Negroes and minority groups to medical and dental schools and to hospitals were passed last week at the meeting of the Chicago Council on Civic Unity.

More than 200 representatives of 92 co-sponsoring agencies attended the meeting and discussed race relations in Chicago in terms of community activities, recreation, health and welfare. The conference was presented by the Chicago Commission on Human Relations.

Speakers included Dr. Charles Richard Drew, professor of surgery at Howard University College of Medicine; Jesse O. Thomas, public relations consultant of the American Red Cross; and Miss Lucy Carner of the Chicago Council of Social Agencies.

Miss Carner gave an optimistic view on Chicago race relations. She told the group:

"Our expectations have been heightened. For example, whereas only a few years ago with consistent non-discriminatory practices were easily cited as shining examples, now agencies that discriminate are conspicuous, and community groups challenge them."

Dr. Drew denounced the "specific obstacles" facing the Negro in his efforts to reach higher standards of health.

Health resolutions called for: 1. The elimination of all questions in race, religion and national origin as well as pictures on ap-

plication blank for students. Applications should not be used as a technique to cover discrimination in medical and dental schools.

2. Faculty members of minority groups to be a part of admission and policymaking committees of such schools.

3. The Chicago City Council to take laws denying tax exemption to any hospital with a biased admissions policy.

4. Hospital staff, nursing and other staffs be open to minority groups on basis of ability only.

In the recreational field the conference recommended that universities provide specific intergroup training for recreational workers. It also called for public agencies in areas of racial tension offer special training to their personnel.

CREEK LETTER

Continued from page one

Grammarians: Daisy Branch, Raleigh; Tamponches, Dorothy Elliott, Vass; Epistolians.

Chapter members are: Misses Nanette Jackson, Norfolk; Lydia Whitfield, St. Paul; Doris Mitchell, Wake Forest; Esther Downs, Rocky Mount; Ruth Bedard, Rocky Mount; Ruby, Conlan Moore, Creedmoor; and Minerva Hedrick, Roanoke, Virginia.

AME'S PLAN TO BUY WILBERFORCE U. FROM OHIO STATE

NEW YORK (AP)—The AME church is planning to buy Wilberforce University from the State of Ohio, it was learned here this week.

Although Bishop D. Ward Nichols of the first episcopal district was known to have left the city Monday to attend an executive conference of the school board at Xenia and has since returned, he could not be reached for a statement.

On Tuesday the school burned a mortgage for \$30,000, which was held by the First National Bank of Xenia, the school's last outstanding debt, \$20,000 being left by Dr. Charles Wesley, president now of the state-controlled school, and \$10,000 mortgaged since Dr. Charles Lander Hill took over as the new president.

The school will not have an annual budget of \$219,000, and to date the amounts received by the school from the various episcopal districts are 1st \$30,000; 3rd \$19,000; 4th, \$14,000; 5th, \$17,000; 13th, \$5,000; 16th, \$1,000 and other sources, \$5,000.

Among the bishops attending the mortgage burning on Tuesday night were D. Ward Nichols, A. J. Allen, George W. Haber, D. O. Walker, and J. H. Claborn.

A conference will soon be held by the executive board of the school and the governor-elect of Ohio, as well as with other state and city officials.

Floods on main rivers usually occur during the winter and early spring, but floods on small streams are more likely during the summer.

Timely Farm Hints

STATE COLLEGE ANSWERS TIMELY FARM QUESTIONS

QUESTION: What equipment is needed to do a satisfactory job of butchering hogs on the farm?

ANSWER: A sharp six or eight-inch butcher knife, a sharp eight-inch boning knife, a smooth steel for straightening edge of knives, a good sandstone, or carbide diamond, a hay hook for handling a hog in barrel, one or two bell-shaped hog scrapers, several hog gambrel sticks or single-trees, and a saw, preferably a meat saw. In addition, you will need a kettle or vat for heating water, a barrel or tank for scalding a table for scraping, and some type of support for hanging up the carcasses.

QUESTION: Who should roast or smoke?

ANSWER: The purpose of smoking is to add flavor, as well as to give a more desirable appearance to the meat. Smoking also improves the keeping qualities of fat, and other hardwoods are satisfactory for smoking meat, although hickory has long been regarded as the best. Green wood and sawdust are desirable if they give a coarser smoke.

QUESTION: What procedure is recommended for smoking?

ANSWER: After the meat has been removed from the heat, or dry cure it should be soaked in cold water for several hours,

scrubbed with a clean stiff brush, and then hung to dry overnight in the smokehouse. Care should be taken to prevent the sets of meat from touching, and the meat should be smoked by either of two methods. It may be smoked 24 to 48 hours at a temperature of approximately 125 to 135 degrees Fahrenheit. This will give a light mahogany-colored smoke.

If the meat is to be stored by summer use, it is generally smoked slowly, however, to smoke it at a temperature of 90 to 100 degrees Fahrenheit, at intervals of approximately five to 10 days over a period of several weeks.

After the meat is smoked, dry people like to season it heavily with black pepper.

Misuse of kerosene, or coal oil, particularly in rural areas, causes hundreds of deaths each year.

One common and dangerous practice is the use of kerosene to speed up a slow fire. Kerosene vapors when poured into a warm stove, and this vapor may explode, igniting clothing and furniture in the room. Kerosene should never be used to start fires.

Kerosene as well as other fuels is often used in portable open-flame heaters. They must be cleaned frequently, handled with care, and repaired promptly when defects become apparent. They should never be filled indoors or placed where there is danger of knocking them over. They should never be used in tightly closed rooms and under no circumstances should they be left burning in bedrooms after you have retired.

Static electricity generated when you scuff your feet across a rug will generate, as much as 18,000 volts, engineers estimate.

homemaker who is keeping up with the knowledge of nutrition is making sure that all bread and rolls she serves are enriched with whole wheat. In making biscuits, loaf bread, pancakes, waffles, cookies, gingerbread and cakes, she uses whole wheat or enriched white flour. Oatmeal is an excellent food that adds to the variety and food value of cookies.

Use prunes in cookies, cereals, and puddings. They are a good source of iron, vitamin A, and niacin.

Molasses—the blacker, the better. Use in cookies, cakes, puddings, bread, and on pancakes. It is high in calcium, iron, and niacin.

Static electricity generated when you scuff your feet across a rug will generate, as much as 18,000 volts, engineers estimate.

a lasting Gift for the Entire Family . . .
Give Stewart-Warner
for lasting Joy and Entertainment

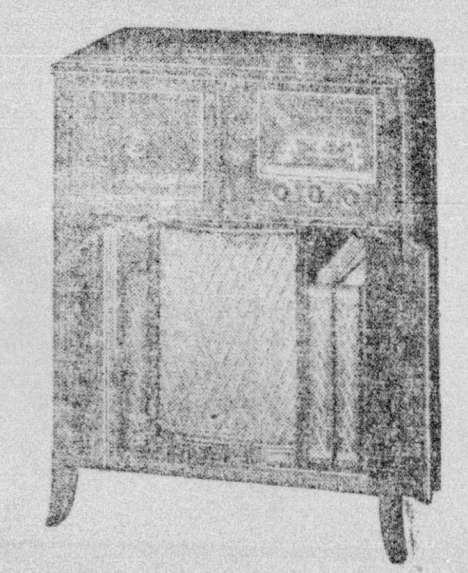


A Gift For All . . . Year Round
MANHATTAN

Worthy of the great American name it bears! Gleaming dark mahogany from Africa, beautifully hand-rubbed to a super finish. Tarnish-proof brass hardware. Built-in dipole antenna for FM, Radar antenna for AM. Multiple-Range tone control. Shadow-Box Dial. Intermix record changer. Electro-Hush Reproducer-banishes needle noise! Dual matched-tone speakers for thrilling full-range realism! FM, AM, and radio-phonograph.

\$249⁹⁵

A Holiday Throughout the Years



A Gift To Fit Every Year

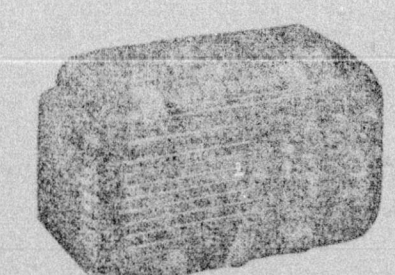


Only Stewart-Warner Gives You **STROBO-SONIC TONE** You can HEAR the Difference!

"Mt. Vernon"

A magnificent period cabinet of genuine African mahogany in the fashionable 18th Century. Happlewhite traditional hand-rubbed super finish. FM-AM-automatic phonograph. Multiple-range tone control. Shadow-Box Dial. Dual matched-tone speakers.

\$234⁹⁵



STEWART WARNER B61T-2 Distinctive new brown plastic styling by the same advanced AM receiver featured in the B61T-4. Built-in loop-antenna—full broadcast band. Also in ivory **\$33⁹⁵**

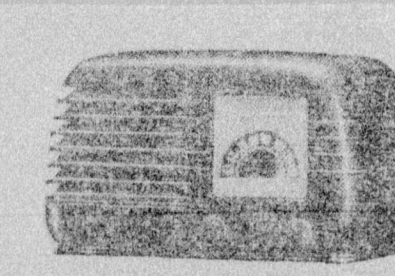
A Gift For Everyone . . . Everywhere

"God-About" The brilliant new portable radio that plays 3 ways—on AC or DC current, and on any dry battery. Recharge on your home current. Sensitive power **\$49⁹⁵** full reception. Black, brown, mahogany.



Ideal Gift for the Traveling Man
THE AIR PAL

Console performs once in a level case. **\$24⁹⁵**

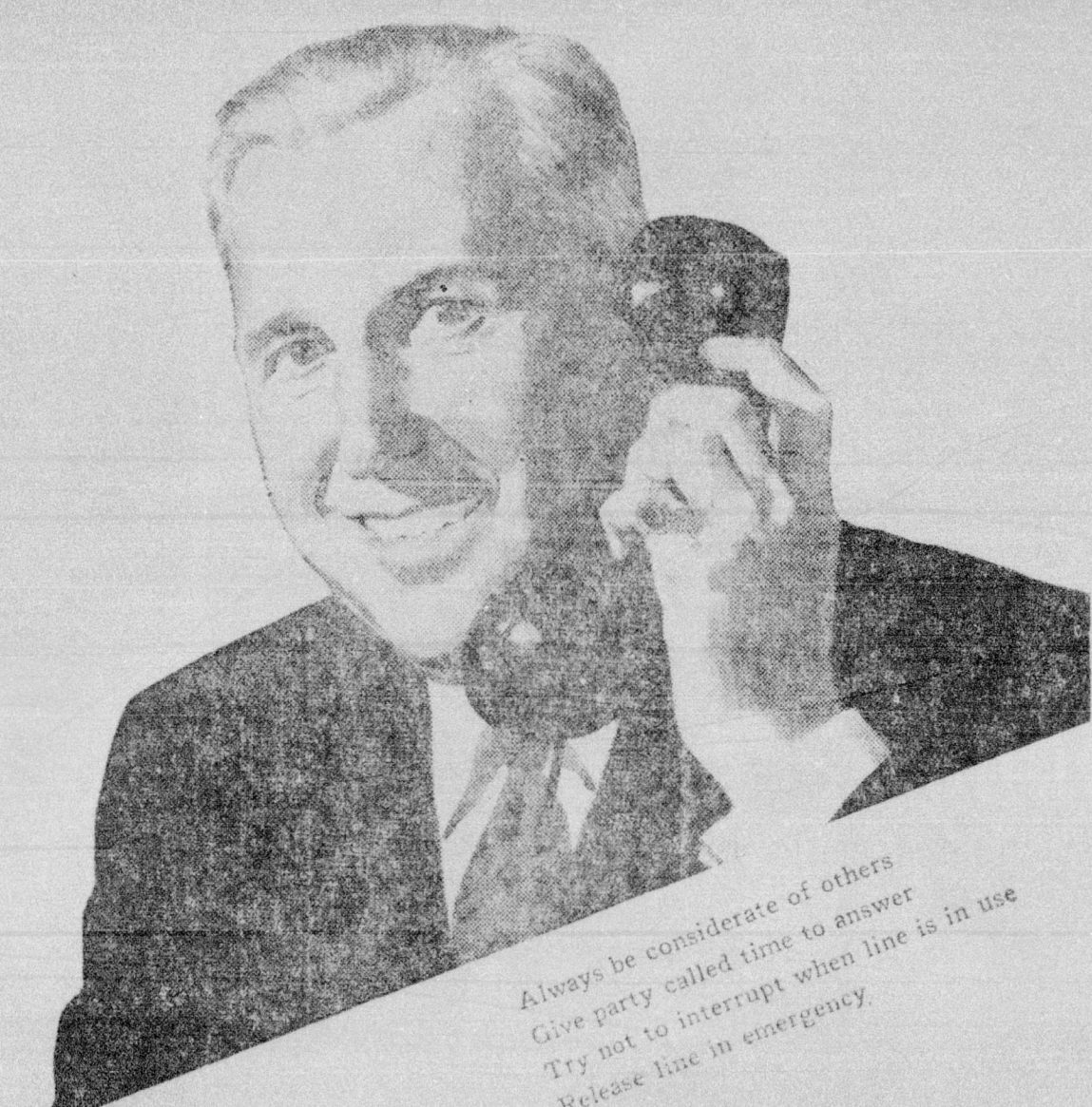


THE STUDENT

A stunning new table radio in beautiful Navy or Ivory plastic. AC DC, genuine PM dynamic speaker, built-in antenna. Extraordinary quality . . . with a difference you can hear. **\$22⁹⁵**

Buy On Credit
Easy Credit Terms
To Fit Your
Individual Budget...

For a smooth PARTY LINE Partnership...



Always be considerate of others
Give party called time to answer
Try not to interrupt when line is in use
Release line in emergency.

SOUTHERN BELL TELEPHONE AND TELEGRAPH COMPANY
Incorporated

You serve bread at its best when you serve **BAMBY BREAD** There's none finer

TAKE HOME BAMBY BREAD

A MODEL FOR EVERY PURPOSE . . . A RADIO FOR EVERY ROOM.

You get a Better Buy at **BLACKWOOD'S** STORES

Starting DEC. 2ND and Every Thursday, Friday and Saturday Until Christmas We Are Open THRU 9:00 P. M.

SERVING NORTH CAROLINA SINCE 1918

519 Kay St. FAYETTEVILLE
103 S. Main St. BURLINGTON
108 W. Gordon St. KINSTON
218 W. Main St. WASHINGTON
109 E. Second St. LUMBERTON
414 S. Grinnett St. HENDERSON
404 Hillsboro St. RALEIGH