

# GREENVILLE



**DR. BUNCHE AWARDED FIRST CARVER SEALS** — The awarding of the first sheet of Carver seals to Dr. Ralph J. Bunche, director of the Trusteeship division of the UN, last week by the George Washington Carver Foundation of Tuskegee

Institute, marked the opening of the foundation's \$250,000 seal campaign for a science building at the institute. Shown above in Dr. Bunche's UN office are members of the seal committee in New York. They are, left to right: Mrs. Penelope L. Bailey

Augustus Simms, Mrs. Sadie M. Andersen, Dr. Bunche, Percival R. Rockette, president; Mrs. Julian B. Thomas, Miss Joseph D. Farmer, and Mrs. Nellie G. Marshall (ANP)



**FOR** gala evenings make this attractive black velvet evening cape. It is unusually pretty with its double cape effect, black taffeta binding and tiny jet buttons. It's so easy and inexpensive to make that you will want one to wear over less formal clothes, too. It's yours for the asking by sending a stamped, self-addressed envelope to the Home Sewing Department of this newspaper, requesting pattern No. E2387X.

## THEOLOG'S FRAT ELECTS PREXY

Carload F. Wiggins, a senior from Nashville, was installed as president of Shaw University's Theological Fraternity at installation services for fraternity officers held Wednesday night in University Church.

The Reverend Paul H. Johnson, Pastor of Martin Street Baptist Church, Raleigh, and President of Shaw's Theological Alumni Association, delivered the address speaking on the subject, "Ministers on a College Campus."

Officers installed in addition to Mr. Wiggins were, Theodore DeAdwyler, School of Religion student from Chicago, Ill., vice president; Julius Roy Butler, junior from Roseboro, secretary; Charles Coleman, sophomore from Clairton, Pa., Assistant Secretary; Gus D. McNeil, sophomore from Dunn, treasurer; Melvin Clark, junior from Norfolk, Va., chaplain; and Worth L. Barbour, Chester, Pa., a junior publicity agent Henry Long.

## NEW COUNTIES ADDED FOR CROP INSURANCE

Beaufort, Caswell, Duplin, Forsyth and Jones Counties have been selected for tobacco crop insurance in 1950, according to Julian E. Mann, State director of the Federal Crop Insurance Corporation. These counties were selected on the basis of signed requests by interested tobacco producers in those counties from a total of eight counties actively seeking the insurance for next year.

Rutherford County has been selected as a new cotton county in 1950.

In 1949 there were ten counties with all-risk crop insurance in North Carolina, and these are being continued in 1950. They are Columbus, Pitt, Stokes, Surry, Vance, Wake and Wilson counties with tobacco insurance; Cleveland and Mecklenburg with cotton insurance; and Perquimans with "multiple" crop insurance.

The Eighty-First Congress permits a fifty per cent increase in the number of counties over those with insurance in 1949 on a nationwide basis. The Act also permits insurance on tobacco which in the curing barns and packhouses, covering fire and other unavoidable causes beginning with 1950 policies.

Duplin County led the five counties selected in the number of tobacco producers agreeing to participate in 1950, and Beaufort County producers showed the largest percentage of those eligible for insurance agreeing to participate next year.

a sophomore of Norfolk, Va., is pianist for the fraternity.

## EXPECT DROP IN FARM INCOME

If Tar Heel farmers expect to keep their net income at present levels during the expected decline in farm prices in 1950, it will be necessary for them to plan their operations carefully and keep production costs as low as possible, says Moyle S. Williams, farm management specialist for the State College Extension Service.

A 10 per cent drop in farm prices has been predicted for 1950 by the U. S. Department of Agriculture's Bureau of Agricultural Economics, same as the decrease in the 1948-49 crop year. Not only will prices be lower, but it is likely that farmers will see less next year, he adds, pointing out that acreage allotments have been announced for wheat and cotton and are probable for other crops.

For the individual farmer, says Williams, all of this will mean a reduction in gross income and probably an even greater reduction in realized net income. As was the case this year, production costs will probably decline less than gross income. Such costs, which include items like fertilizer and farm machinery, are expected to remain high.

Williams asserts that better farm planning will be needed for 1950. Individual farmers, he says, should strive to be better farm managers, keep costs as low as possible, and produce quality products which will bring premium prices to help keep income at present levels. Use of improved practices will bring about higher crop yields at lower unit costs, but poor farmers who follow inefficient practices will have difficulty breaking even.

**BLACKWOOD'S ASSO. STORE**  
GARRIS, BROS., Owners  
Bicycle and Radio Repairs  
Trade-ins. Whizzer Bike  
Motors — Terms  
110 W. 5th St., Greenville

**Whites Stores, Inc.**  
WHAT YOU WANT AT  
WHAT YOU WANT TO PAY  
Greenville N. C.

**CURFIELD PETERSON'S GROCERY**  
We Specialize In  
GROCERIES AND SLICED ICE  
COLD WATERMELON  
Free Delivery Service  
Greenville, N. C.

**EFIRD'S DEPARTMENT STORE**  
"WHERE PRICES ARE LOW"  
Evans St. Greenville

## SHAW STUDENTS STAGE PARTY FOR PRESIDENT

Students of Shaw University gave President Robert P. Daniel a birthday party Wednesday afternoon in University Dining Hall. It was a surprise affair, arranged by the Student Council of which Johnathan G. Brown, a senior of Brooklyn, N. Y., is president. The party followed the regular

**VETERANS NEWSSTAND**  
IS TOPS WITH NEWSPAPERS - MAGAZINES  
Life Weekly, Journal and Guide, Afro, Carolinian  
Pittsburgh Courier and Comic Books  
A COMPLETE SHOE SHINE SERVICE  
Dial 2998 George Suggs, Mgr. William Burney, Prop.  
231 S. Queen St. Free Delivery Service

## Watch Housing Program, NAACP Branches Warned

WASHINGTON — Branches of the National Association for the Advancement of Colored People throughout the country have been alerted to keep a vigilant eye upon the housing program in their respective localities being developed under the Federal Housing Act of 1949.

In a memorandum to all branches, Leslie Perry of the Association's Washington Bureau warns the local units to be "ever watchful that the slum clearance program is not used principally as a vehicle for getting Negroes out of desirable sections of the city and relocated in rundown segregated sections."

Pointing out the responsibility of local housing authorities in determining need, site location, and income limit for occupants, Mr. Perry urges the branches to "examine the qualifications and attitudes of every candidate for membership on the local authority." Further, the NAACP official states, "local housing authorities are requested under the law to relocate families displaced by slum clearance activities in decent, safe and sanitary dwellings with rents, public utilities and other services not less desirable than those in the areas from which the families were displaced."

The branches are also urged to have representatives testify at public hearings held by the local authorities to settle on the acquisition of sites for slum clearance. "No eligible family should be segregated

ed or otherwise discriminated against, Mr. Perry's memorandum asserts.

### WHY EDS. SKIP TOWN

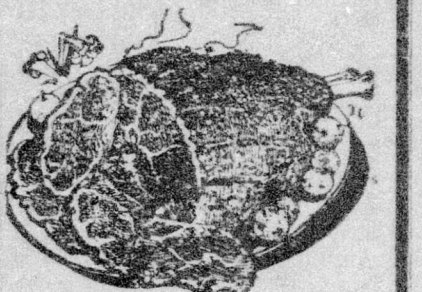
"A Thanksgiving dinner was served by Mr. and Mrs. — after the wedding of their daughter." — New York paper.

"4 rms. 1st flr. Hot water furn. with one or two daughters" — Classified ad in Massachusetts paper.

**SAY: BOYS AND GIRLS**  
Does that old bicycle ride tough and look bad? We do expert repairing and painting. Our prices are reasonable. We buy old bicycle parts.  
505 W. 14th St. GREENVILLE, N. C.  
Curfield Peterson, Prop.

**W. H. LILLEY**  
1106 Clark St., Greenville, N. C.  
For  
**THE WORLD'S BEST PRODUCTS**  
ADVERTISEMENTS  
CALENDERS, FANS WITH YOUR OWN PHOTOS  
Also Weekly Newspapers, Carolinian, Pittsburgh Courier, And Chicago Defender, Our World and Ebony Magazines.  
DIAL 4510

We Will Accept Nothing But The Best In Our Newly Installed Meat Counter.



VEGETABLES & MEATS FRESH DAILY  
**FORBES GROCERY & MARKET**  
FLEMING ST. GREENVILLE