

### DELTA DOINGS

Delta Sigma Theta Sorority, Inc.

The past weekend has been a busy one for Alpha Zeta Sigma Chapter. Friday, March 15, saw the initiation of Mrs. Gladys White in a beautiful and impressive ceremony at the home of Soror Martha S. Davidson. Immediately following the ceremony, the group was served a delightful dinner prepared under the supervision of Soror Roberta Livingston.

Each soror received a souvenir from the neophyte. Assisting and welcoming the new soror to the chapter were: Sorors Rosalie Williams, Floriss Turner, Pearl Peace, Harriet Nunn, Almira Nunn, Gila Harris, Ethel Lytle, Alma Williams, Ada Jarnigan, Geraldine Harris, Nannie Boston, Roberta Lightner, Helen Ragland, Mabel Wright, Beulah Williams, Victoria Moore, Alice Joyner, Elsie Reid, Martha Davidson, Elizabeth Coffield, Hortense Fleming, Catherine Middleton, Wilmoth Carter, Elnora Kee and Etta Toole.

Mrs. White is elementary school supervisor for Wake County schools. She is the wife of Mr. Frank White of Shaw University and the mother of two teen age daughters.

On Saturday, March 16, the chapter held its monthly meeting at the Bloodworth Street Y.M.C.A. with Sorors Gila Harris, Elnora Kee, Etta Toole and Ada Jarnigan as hostesses.

The reports of the delegates

to the National Convention were presented and plans for the Jabberwock were discussed. Soror Beulah Williams was elected delegate to the regional meeting to be held in Hartford, Connecticut in April.

Soror Lillian Abron of Fort Jackson, S. C. was a weekend guest of her sister, Soror Elizabeth Coffield.

Soror Margaret Bugg was confined to her home over the weekend due to illness.

Soror Catherine Middleton has been appointed division chairman of the American Cancer Society drive for April.

### Jackson College Announces 1957 Baseball Schedule

JACKSON, MISS. — The Jackson State College baseball Tigers open the 1957 season Saturday, March 16, when they play Xavier University, the first of team doubleheaders carded for the Tigers.

Other games slated by the Tigers are as follows: Friday and Saturday, March 22 and 23, Mississippi Industrial College, there; Vocational College, Greenwood; Friday and Saturday, April 5 and 6, Southern University, here; Friday and Saturday, April 12 and

13, Grambling College, here; Friday and Saturday, April 26 and 27, Grambling College, there; Friday and Saturday, May 2 and 3, Mississippi Vocational, Greenwood; Wednesday, May 8, Alcorn College, here; Friday and Saturday, May 10 and 11, Mississippi Vocational, here; and Wednesday, May 15, Alcorn College, Port Gibson.

As much as 75 per cent of the nitrogen in poultry manure can escape if it remains wet in the chicken houses or if allowed to heat.

## AKA's Sponsor A Charm School

ELIZABETH CITY — The Alpha Kappa Alpha Sorority of Elizabeth City State Teachers College will conduct a three-day Charm School on the college campus on Thursday, Friday, and Saturday, March 21 through 23, of this week.

Public school students and teachers as well as adults of the community are invited to share in the demonstrations and discussions designed to present new and approved standards of dress for various occasions, hair styling and other manners of personal enrichment which will highlight the Charm School's activities.

On Thursday, March 21, from 8 to 8 p. m., Mrs. Mae A. Roper of the Department of Fine Arts, Elizabeth City State Teachers College, Mrs. William Duers, director of the Duers School of Beauty Culture, and Mr. Andrew Bailey of the D. Walter Harris Men's Clothiers of Elizabeth City will be consultants in the areas of correct dress styling and attire, hair arrangement, and personal grooming.

On Friday, March 22, from 8:45 to 8:00 p. m., Dr. W. W. Heffler, college physician, and Mrs. Georgia Long Smith of the college department of health and physical education will be consultants on problems of health and social adjustment. This feature takes place immediately before the musical concert featuring Miss Vivian Scott, which is to be presented under the auspices of the college lycium committee.

The Charm School activities will be brought to a close on Saturday, March 23, from 2:00 to 4:00 p. m.

at which time Miss Mamie Bedell, college dietitian, and Otto Harvey of the P. W. Moore School department of physical education will serve as consultants on table arrangement, host, hostess, and dinner guests etiquette as well as social dancing. Saturday's activities will be followed by an after-dinner dance for all participants in the Charm School activities. Zeta Kappa Omega Chapter of the Alpha Kappa Alpha Sorority of which Mrs. S. D. Williams is president, is sponsor of the Charm School.

Oven fruits and vegetables require longer cooking time and more liquid than surface cooking.

### Vic Vet says

VA BENEFIT PAYMENTS ARE EXCLUDED FROM FEDERAL INCOME TAXES AND THEREFORE NEED NOT BE REPORTED ON INCOME TAX RETURNS FOR 1956



For full information contact your nearest VETERANS ADMINISTRATION office

— Dr. Joseph W. Parker, Jr., basileus of the Alpha Omicron Chapter of Omega Psi Phi Fraternity, Inc. is shown with the Omegas' program with Prof. Carl E. DeVane, (center) Shaw University, instructor, who was guest speaker for Memorial Services March 10. Looking on is John C. Bias of Scotland Neck's Brawley High School. — J. B. Harren Photo.



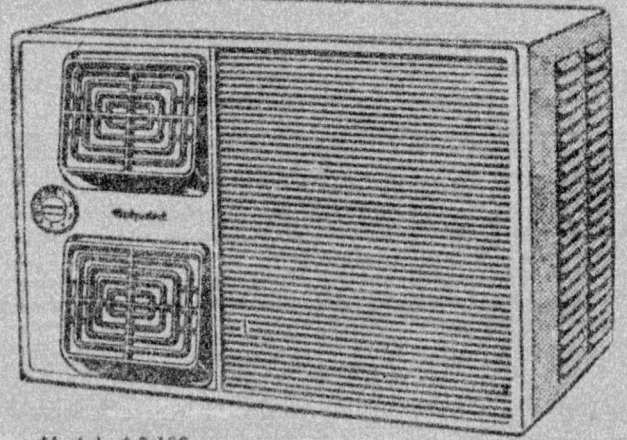
**Terry Tex** WASH LIKE A TOWEL!  
JIFFY COVERS

**Sure Fit Seat Cover Center**  
500 W. Morgan St. TEmple 2-3164

These Jiffy Covers Will Be Shown At The **FOOD SHOW & HOME MAKERS EXPOSITION** APRIL 4 - 5 RALEIGH MEMORIAL AUDITORIUM

## House Wives These Are Some Of The Values We Will Display At The Carolinian Food Show & Homemakers Exposition

Get Set For The Hot Months Ahead SEE OUR AIR CONDITIONING Units EASY TERMS — We Refuse To Be Undersold!



Model AS-100 BRAND NEW 1956 **Hotpoint** ONE TON AIR CONDITIONER

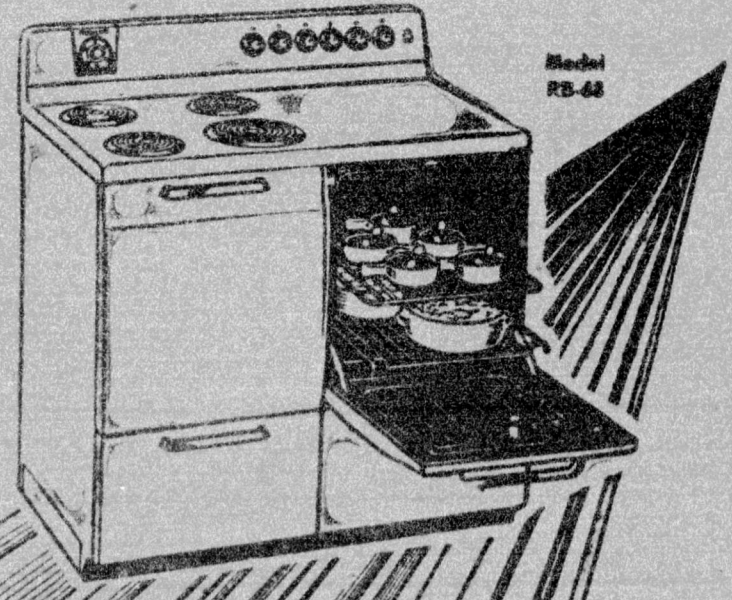
ONLY \$179

ELECTRIC RANGE \$148

SPECIAL LABOR DAY PRICE

- FEATURES
- GIANT SUPER OVEN . . . cooks a complete oven meal for 24, roasts a 40-lb. turkey!
- SUPER 2600" CALROD UNIT . . . world's fastest!
- Automatic oven temperature control!
- Minute timer . . . for accurate timing!
- Three storage drawers!
- All porcelain finish!
- Appliance outlet!

FULL SIZE 19 INCH RANGE

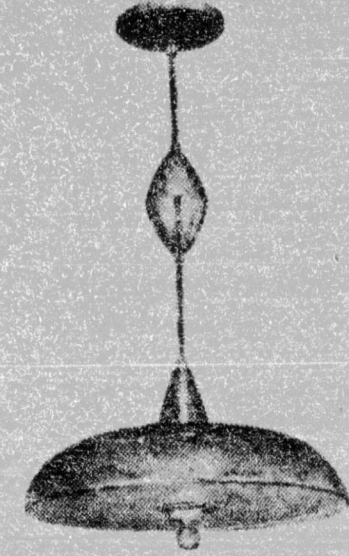


**Hotpoint**

We Are Closing Out All 1956 Models At Dealer Cost

**Stephens** APPLIANCE COMPANY Your local Hotpoint dealer RALEIGH 306 Hillsboro Phone 1-2531 BURLINGTON Phone 1-2521 SILER CITY Phone 3-

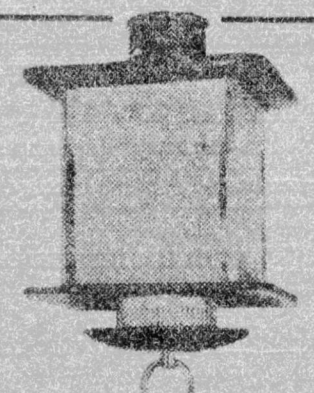
## OPEN FOR BUSINESS Wholesale Electric Supply, Inc. Is Now Ready To Serve Your Electric Needs



GLOBE Lighting Fixtures Are Featured at Wholesale Electric Supply Co. Globe Fixtures Are as Lovely to See by as They Are to Look at. Whatever the Decor — You'll Find A GLOBE Fixture That Is Ideally Suited.

FIXTURES ELECTRICAL APPLIANCES WIRING SUPPLIES

**Wholesale Electric Supply, INC.** 2012 Fairview Rd. TE 4-7344



We Specialize In Small Household Appliances

Visit Our Booth At The 5th Annual Carolinian Food Show And Homemakers Exposition Raleigh Memorial Auditorium

**APR. 4-5** Three Sessions Daily 11:00 A.M. - 2 P.M. - 8 P.M.

Enjoy today's fun . . .

Refresh without filling

Keeping pace with the modern trend to lighter foods, today's Pepsi-Cola, reduced in calories, refreshes without filling. Have a Pepsi—the modern the light refreshment.



The Light refreshment