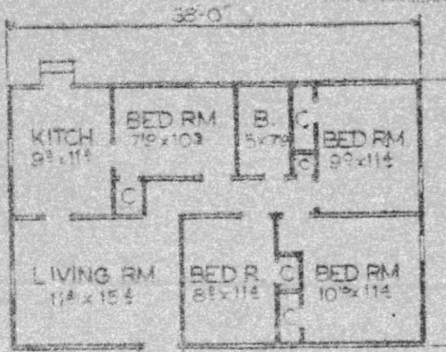


# CREATIVE HOMES CORP.

"BUILDERS OF BASIC HOMES"

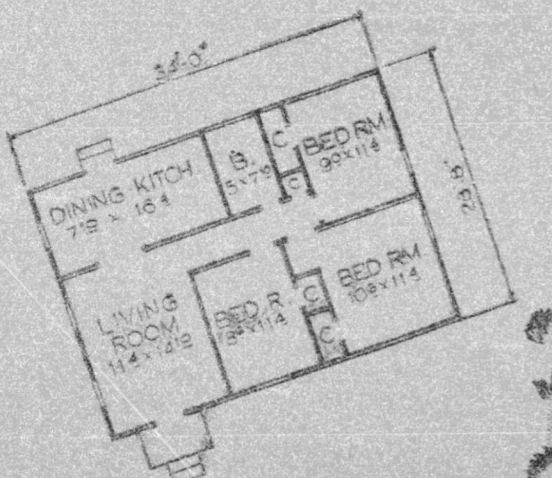
## Formally Opened For Business

SEE THESE MODELS ON  
OUR DISPLAY LOT.



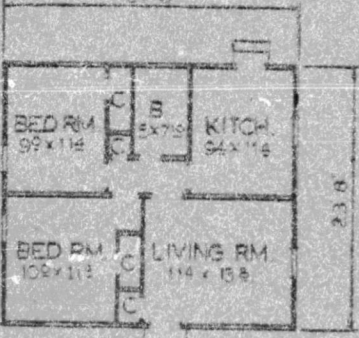
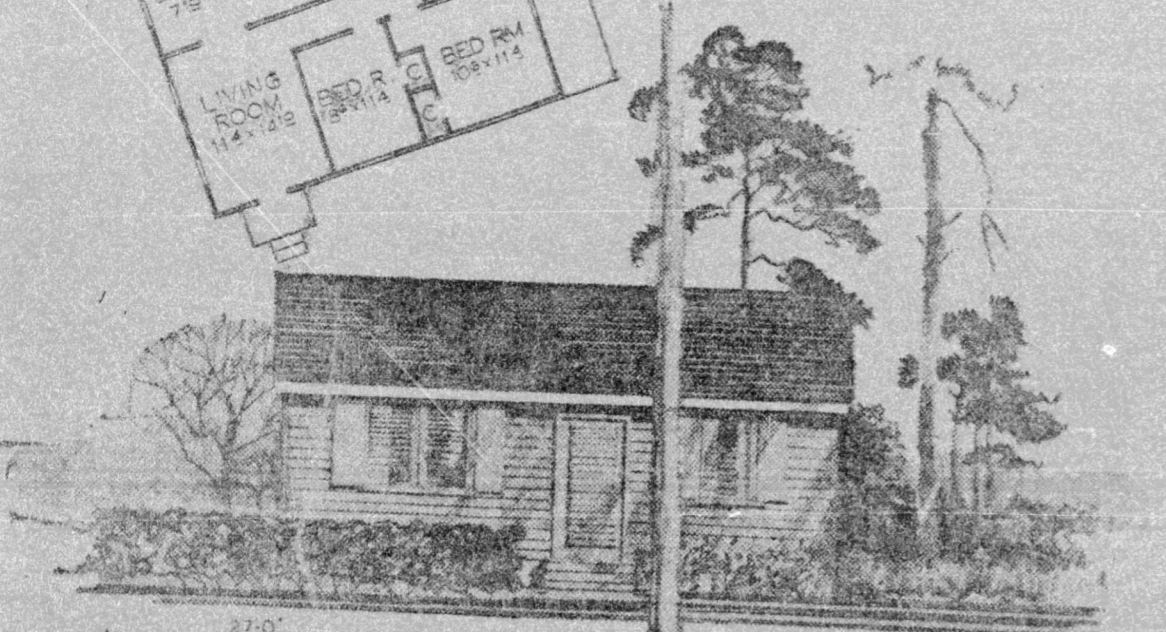
**THE WESTOVER**  
Cash Price — \$2595.00

You need never feel cramped again in this wonderful four bedroom home. Idea for the large family at an unbelievable price.



**THE STANTON**  
Cash Price — \$2195.00

Your choice for modern living. Your children will love the kitchen-family room arrangement.



**THE PRINCETON**  
Cash Price — \$1895.00

This modern home affords dining facilities in kitchen and has ideal placement of openings for traffic flow and easy furniture arrangement.

### We Invite Your Inspection and Comparison!

We offer the best in materials, workmanship and design. Drive out and see our display homes. A courteous representative will be eager to answer any of your questions and point out the many features too numerous to mention here.

#### CLIP AND MAIL

CREATIVE HOMES CORPORATION  
910 Downtown Boulevard  
Raleigh, N.C.  
Please mail me without obligation your free illustrated folder on your low cost homes.

NAME \_\_\_\_\_  
ADDRESS \_\_\_\_\_  
CITY \_\_\_\_\_ STATE \_\_\_\_\_

#### RENTAL INCOME:

Put a Creative Home on that empty lot and convert an expense into an income at high dividends for you!

# CREATIVE HOMES

Ph. VA. 8-3171

910 Downtown  
Boulevard  
Raleigh

In Raleigh At

910 Downtown Boulevard

## SUNDAY

### March 16, 1958

### 12:00 noon ... till ...

LOOK FOR THE SIGN WITH THE  
REVOLVING HOUSE!

## SENSATIONAL OPENING OFFER!

BUILDS ONE OF OUR HOMES  
ON YOUR LOT!

It's As Simple As This: Bring A One Dollar Bill And The Deed To Your Lot. (We'll Return Your Deed... We Do Not Keep It!)

WE BUILD ANYWHERE...  
WE BUILD FOR ANYBODY!

### WE DO OUR OWN FINANCING

1 & 2 BEDROOM HOMES - - - - - 54 AND 60 MONTHS  
3 & 4 BEDROOM HOMES - - - - - 60, 66 AND 72 MONTHS

- These are basic homes complete in every respect on the outside.
- The customer finishes the interior.
- Studding for partitions and floors are included in our prices.
- We do no plumbing, wiring or heating.
- These homes are not pre-cut, pre-fab, portable or sectional.
- Our experienced carpenters will build your house individually for you on your lot.
- Our floor plans can be changed to suit you at no extra cost.
- We will build any size house from your own floor plans if you so desire.
- There will be a flat charge of \$1.00 per mile for labor transportation when house site is more than 25 miles from the Raleigh city limits.

#### Distinctive FEATURES Enhancing EACH HOME

- Gable or Hip Roofs, Your Choice at No Additional Charge
- Full 8" Ceiling Height
- Floor Joists—2"x8" on 24" Centers
- SILLS—2" x 8" DOUBLED with LEDGER
- CEILING JOISTS—2" x 6" on 24" Centers
- Piers—8" x 8" or 16" Cement Blocks, all Joints Mortared, on 4" x 16" Cement Bases
- Studs—2" x 4" on 24" Centers
- Bottom Plate—2" x 4" Single
- Top Plate—2" x 4" Doubled
- Corner Braces—2 Way
- Flooring, Siding, and Sheathing—No. 2 Pine-Dry
- Louvers—6" Triangular in each Gable End
- Roof—210 lbs. Shingles
- Roof—Has 15" Overhang
- Screens—Aluminum Full Length
- Paint—2 Coats High Standard
- Windows  
Front—Jalousie (See Below), Weatherstripped  
Sides and Rear—Wood Double Hung, Weatherstripped
- Doors  
Front—Jalousie (See Below)  
Other—Stock w-Screen Door  
\*Front door and window specifications vary only in "The Lakeview," "The Meadowbrook," and "The Glenwood."

THE SPECIFICATIONS ABOVE APPLY TO ALL HOMES AND PRICES SHOWN IN THIS ADVERTISEMENT

Carpports—10' 8" or 20' x 11"—Cash Price \$275.00—either gable or hip roof. 23' 8" x 11"—Cash Price \$295.00—either gable or hip roof. Either can be financed with your home.

Covered Porches—front or side—Cash Price \$195.00—attached to either hip or gable roofs. These can be financed with your home.

Many Styles And Plans To Choose From. Shown On This Page Are 12 Of The 15 Homes Available.



**THE HILLCREST** Cash Price without Porch \$2345  
Cash Price with Porch \$2749



**THE SARATOGA** Cash Price — \$2495.00



**THE KINGSBURY**  
Cash Price \$2195



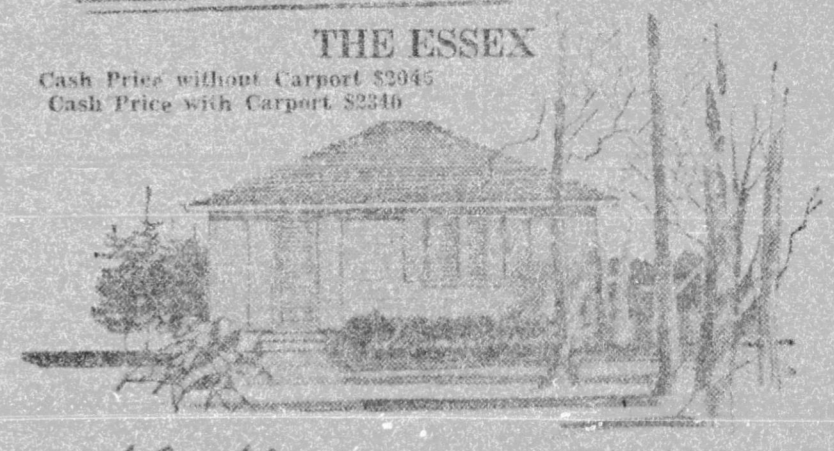
Cash Price \$2195  
**THE BEVERLY**



**THE HOPEDALE**  
Cash Price \$2195



Cash Price without Carport \$2945  
Cash Price with Carport \$3340  
**THE ESSEX**



**THE LAFAYETTE**  
Cash Price — \$1795



**THE KENSINGTON**  
Cash Price \$1645



Cash Price without Carport \$1495  
Cash Price with Carport \$1790  
**THE WINDSOR**