

PATRONIZE OUR ADVERTISERS



**LEAD BENNETT FROSH**—Recently elected officers of the freshman class at Bennett College are, left to right: Misses Sandra Huggins, of Lima, Ohio, financial secretary; Andrea Mast, of Houston, Texas, vice-chairman; Patricia Greene, of Baltimore, Md., chairman; Sandra Jenkins, of Orangeburg, S. C., recording secretary, and Juliette Douglas, of Greensboro, representative-at-large. Not shown, Miss Carole Turner, of Hollis, N. Y., treasurer.

## Ribicoff: "Negro Can Be President Of USA"

CHICAGO — Abraham Ribicoff, who left President Kennedy's cabinet to run for the U. S. Senate in Connecticut, believes "a Negro can be President of the United States," reveals an exclusive interview in Jet, a national news magazine.

"As Kennedy broke the traditional barrier against a Catholic becoming President, the day could come when a Negro could occupy the White House," Ribicoff said.

Ribicoff also disclosed that he left the Cabinet because he felt he could do more for civil rights as a Senator.

"After 18 months in the Cabinet I came to realize that what is needed is a vote in the Senate rather

than a voice in the land," said the former Secretary of Health, Education and Welfare.

Ribicoff lashed out at the refusal of Congress to face up to its responsibilities particularly in the areas of social welfare and civil rights.

"Here we are 38 years away from the 21st Century, and we have a Congress acting like we were still in the 19th Century. The President proposes but Congress disposes."

Ribicoff, who is campaigning vigorously in Connecticut, makes a point of singling out children in and telling them they "can be President of the United States," the article noted.

It is figured that by 1975 farmers must produce half again as much in many crops if Americans are to eat as well then as they do now. The needs are expected to include 81 percent more broilers, 80 percent more fruit and vegetables, 56 percent more meal animals and 48 per cent more dairy products, among other increases.

The average person spends about \$91 per year for meat.



POSONERS  
**New Skintona**  
*lightens, brightens skin*

**MAKES ALL SKIN BLEACHES "OLD FASHIONED"**

• lightens dark spots  
• perfect powder base

65 1.00

Manufacturers of Posner's Bergamot, "The Jar with the Star"

## A&T Welcomes Gov. Sanford

GREENSBORO — Terry Sanford, governor of North Carolina, received a "red carpet" welcome as he made a brief speaking engagement at A&T College last week.

A crowd, estimated at better than 4,000 persons, A&T students and faculty and townspeople, nearly filled the open area in front of Bluford Library to hear the Gov-

ernor speak from the library's main entrance.

Speaking directly to the students, he said, "Students like you are making sacrifices... your parents are making sacrifices, and the taxpayers are making sacrifices and out of these noble efforts we will find solutions to the problems which beset this State."

The Governor was introduced by Dr. Dowdy and Major High, a Greensboro attorney, presided.

**UMSTEAD, S**  
TRANSFER COMPANY • GROCERY STORE

**LIGHT AND HEAVY HAULING LOCAL AND LONG DISTANCE**  
Courteous — Prompt Efficient

**FULL LINE OF GROCERIES**  
Your Patronage Appreciated

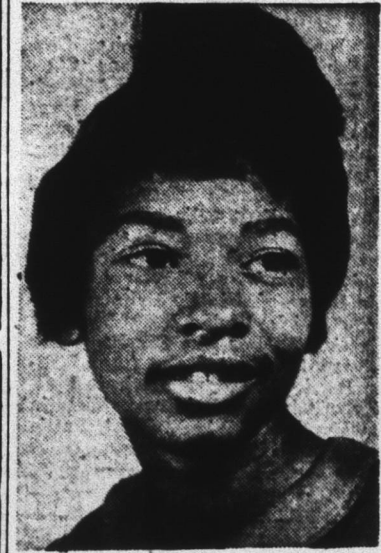
ED. UMSTEAD, Manager  
602 S. Dawson Street • Tarboro & Martin Streets  
DIAL TE 2-9478—TE 2-9212

**DIAMOND Bridal Set**

Our greatest-value! A sparkling center diamond in the engagement ring with a matching wedding band. The exquisite setting makes the diamond appear even larger. Open on account today!

MADE TO SELL FOR \$55.00  
**SAVE \$20 \$35.**  
*Pay Weekly or Monthly!*

**GEM WATCH SHOP**  
306 FAYETTEVILLE ST. TE 2-3431



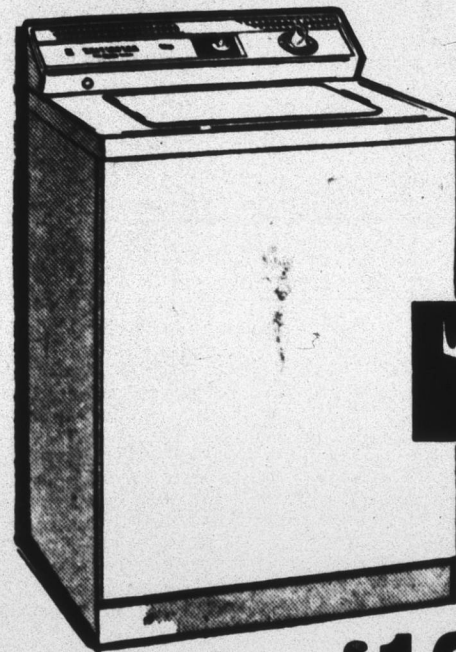
**GETS ALUMNI SCHOLARSHIP** — Tarshia Ingram, Hamlet, a freshman at A&T College, is studying under a scholarship grant provided by the Sandhill Chapter of the A&T College General Alumni Association. The daughter of Mrs. Marjorie Ingram, Hamlet, Tarshia plans to major in business education.

## QUES' OUTLOOK AT FSTC

FAYETTEVILLE — The Delta Gamma Chapter of the Omega Psi Phi Fraternity, which was the initial Greek letter organization on the campus of FSTC, is looking forward to a booming year in many ways. The fraternity has already sponsored its "Queen for a Day" program at which Miss Edna Martin, a senior and a member of the Delta Sigma Theta Sorority was crowned Miss Omega Psi Phi for 1962-63. Runners up were: 1. Miss Eva McEachern 2. Miss Mary Wicker 3. Miss Glenda Check.

The average consumer will eat the equivalent of 23 hogs, 10 lambs, 8 steers and 4 veal calves during his meat-eating days.

## Thrifty FRIGIDAIRE Washer with AUTOMATIC Soak Cycle!



- New 12-lb. "big wash" capacity!
  - Fresh running water rinses!
  - Spins clothes driest of all!
  - 3-Ring Agitator action cleans clothes inside and out!
- Ask about exclusive 15-Year Lifetime Test!
- \$199** WITH OPERATING TRADE easy terms
- THE STURDY FRIGIDAIRE WASHER

## FREE 3-DAY HOME TRIAL

**Johnson-Lambe Co.**  
Appliances 322 S. Salisbury St. Sporting Frigidaire Raleigh Goods Phone TE 2-8848

**FREE DRIVE-IN PARKING**  
Support Your United Fund

# 'SUPER RIGHT' BEEF SALE

— NOW IN PROGRESS —  
"SUPER-RIGHT" QUALITY HEAVY GRAIN FED BEEF

# STEAK

- CLUB SIRLOIN or Boneless TOP ROUND **95¢ LB.**
- PORTER-HOUSE or BONELESS RIB **99¢ LB.**
- CUBED **99¢ LB.**

**BONELESS LEAN STEW BEEF Lb. 69¢**

"SUPER-RIGHT" QUALITY HEAVY GRAIN FED BEEF

# ROAST

- Boneless Chuck Lb. 65¢ Chuck Blade Lb. 45¢
- Shoulder Clod Lb. 69¢ Rib STANDING 7-INCH 5TH & 6TH PART Lb. 75¢

"SUPER-RIGHT" QUALITY LEAN  
**Fresh Ground Beef 3 Lb. Pkg. \$1.29**

- "SUPER-RIGHT" HEAVY BEEF 250 to 300-LB. **SIDE OF BEEF Lb. 49¢**
- "SUPER-RIGHT" HEAVY BEEF 170 to 200-LB. **FOREQUARTER Lb. 45¢**
- "SUPER-RIGHT" HEAVY BEEF 90 to 100-LB. **ARM CHUCK Lb. 45¢**
- "SUPER-RIGHT" HEAVY BEEF 25 to 30-LB. **SHORT LOIN Lb. 85¢**
- "SUPER-RIGHT" HEAVY BEEF 100 to 150-LB. **HINDQUARTER Lb. 59¢**
- "SUPER-RIGHT" HEAVY BEEF 5 to 100-LB. **BEEF ROUND Lb. 59¢**
- "SUPER-RIGHT" HEAVY BEEF 45 to 60-LB. **FULL LOIN Lb. 75¢**
- "SUPER-RIGHT" HEAVY BEEF 20 to 25-LB. **SIRLOIN BUTT Lb. 69¢**

"Super-Right" Heavy Grain Fed Beef — 25 to 30-LB. AVG. 10-INCH CUT  
**BEEF RIB PER LB. 63¢**

Prices in This Ad Are Effective Through Sat., Nov. 3rd.

KENTUCKY STRAIGHT BOURBON WHISKY, 86 PROOF, OLD KENTUCKY DISTILLERY, LOUISVILLE, KENTUCKY

# BOTTOMS UP

**FIFTH \$3 90**  
**PINT \$2 50**

**It's Debutante Time In Raleigh**

**We Have Just Received The Latest In Styles And Colors Bought For The 1962 Debutante Season**

**Party — Cocktail — Evening**

ALL DESIGNED AND TAILORED IN NEW YORK and PARIS  
CHOOSE YOUR WARDROBE NOW

# Goodman's Ladies Shop

Wilmington at Hargett  
"The Little Shop Around The Corner"