

FOR BEST RESULTS

advertisers invariably use the columns of the Democrat. With its full paid circulation, intensely covering the local shopping area, it is the best advertising medium available.

WATAUGA DEMOCRAT

An Independent Weekly Newspaper . . . Seventy-Third Year of Continuous Publication

BOONE WEATHER				
1961	High	Low	6 pm	prec.
Jan. 17	37	10	32	.04
Jan. 18	43	31	31	
Jan. 19	39	27	27	
Jan. 20	27	11	14	.43
Jan. 21	18	6	6	.06
Jan. 22	20	-2	15	.97
Jan. 23	31	11	28	tr.
Total prec. .80 inch. Snow—About 6 inches				

VOLUME LXXIII—NO. 30

PRICE: FIVE CENTS

BOONE, WATAUGA COUNTY, NORTH CAROLINA THURSDAY, JANUARY 26, 1961

TWELVE PAGES—TWO SECTIONS

HOUSES OF FINANCE GROW

Bank, Savings And Loan Report Excellent Growth

Northwestern Assets Now At \$100 Million

The Northwestern Bank held its annual meeting of stockholders on January 17 in North Wilkesboro. Edwin Duncan, president, reported that the statement for the year-end of 1960 shows total assets of over \$100,000,000 for the first time in the history of the bank. This amount is an increase of over \$5,000,000. Mr. Duncan's report continued . . . Business in our territory was adversely affected by impassable roads in March and April causing a large increase in the cost of doing business. We did have excellent crops with fair prices prevailing on the whole. Our industry had a fair year with increase in employment throughout our area, reflecting an increase in business done with the bank. As a whole, the large tourist business in our territory was slightly off from last year. The mining industry in our territory had the lowest employment in years and affected those banks which ordinarily have a large volume of mining business.

During the year our deposits showed an increase of over \$4,



The new entrance to the Dauphin Disco Dougherty Memorial Library on the campus of Appalachian State Teachers College. The building houses over 10,000 books. W. L. Eury is librarian.

Home Owning Institution Breaks Record

Mr. James Marsh, Secretary-Treasurer of the Watauga Savings and Loan Association told the annual stockholders meeting last Wednesday that the corporation had the best year in its history in 1960.

The institution closed the year with assets of \$6,197,901.57, a net gain for the year of \$771,086.57 for the year.

Dividends for the year amounted to \$203,819.99, the largest amount in the 39-year history of the Association.

A record \$64,000 was placed in the reserve account.

H. Grady Farthing, President, welcomed the stockholders and gave a brief history of the Association.

Directors Named
The stockholders elected the following directors for 1961:

H. Grady Farthing, local cattle raiser and President of the Watauga Savings & Loan Association; R. C. Rivers, Publisher of the Watauga Democrat and Vice-President of the Watauga Savings & Loan Association; Walter H. Greene, prominent Watauga County farmer; Dr. William M. Matheson, local dentist; Guy Hunt, owner of Hunt's Department Store; Dr. Wayne R. Richardson, co-owner of Boone Drug Co.; Howard W. Mast, Valle Crucis merchant; H. P. Holshouser, Blowing Rock Realtor and Insurance man, and James P. Marsh, who came to the Association in September and who is Secretary and Treasurer.

Record Of Growth
Watauga Savings and Loan Association was organized in April (continued on page two)

James Marsh Is Given Jaycee Service Award

James Marsh, secretary of the Watauga Savings and Loan Association, was presented the Distinguished Service Award by the Boone Jaycees at their semi-annual banquet and Ladies' Night on January 16.

The award is given each year to the young man who has proved



JAMES P. MARSH

himself worthy in character and community service.

Awards Chairman Bob Barnes, in presenting the award, called Mr. Marsh "outstanding," both as a businessman and as a civic leader.

A member of the First Baptist Church in Boone, Mr. Marsh has served as a deacon, a teacher, and as treasurer. He has been treasurer and executive vice president of the Southern Historical Association, Inc., treasurer of the Watauga County United Fund, a member of the board of directors of the Boone Rotary Club, a member of the Northwest North Carolina Development Association, and a vice president of the Boone Chamber of Commerce.

Active also in business and professional organizations, Mr. Marsh has been a member of the executive committee of the Young Bankers' Division of the North Carolina Bankers Association and a member of the board of directors of the Western North Carolina Division of the National Association of Bank Auditors and Comptrollers.

Mr. Marsh was highly praised for his accomplishments and his unselfish service.

Dr. J. F. Bozard, dean of instruction at Appalachian State Teachers College, was guest speaker at the banquet. He spoke on "Proper Words in Their Proper Places."

Court Term In Progress

The January term of Watauga Superior Court continued in session Tuesday afternoon, with many of the 150 cases having been disposed of. The Honorable W. K. McLean of Asheville is presiding judge.

A majority of the cases in the criminal court were for speeding and other traffic violations. In many of these cases the defendants plead guilty, and punishment included a fine and court costs.

No trials were on docket that were expected to consume a great deal of time, and observers believed court would end soon. A listing of the cases and their disposal will be published in next week's Watauga Democrat.

Boone Postal Receipts Hit Record Level

Figures just released by Acting Postmaster R. G. Greene show that gross annual postal receipts at the Boone post office reached an all-time high for the calendar year 1960.

Total receipts for 1960 amounted to \$85,943.63 as compared to \$68,250.10 for 1959, or a gain of 25%. Receipts for the Christmas season just passed were only about 8% over the previous year, but overall receipts accounted for the entire year.

Mr. Greene explained that the good increase was from a variety of sources, generally business, and (continued on page two)

Triplet Gets All-American



KING TRIPLETT

King Triplett, halfback on the Class 2A Western football champions, has been named to the 1960 High School All-American football squad. His name appeared with other choices in this week's issue of "The Sporting News."

Triplett, who was a senior on the Blue Devils' of Appalachian team this year, had 19 touchdowns to his credit, as the Devils won the western title.

Heart Disease Leading Cause Of Deaths In Co.

Disease of the heart and blood vessels cause more deaths in Watauga County than any other disease, according to Mrs. Carlos DeLima and Mrs. W. W. Littleton, co-chairman of the Watauga Heart Council. Quoting latest statistics from the North Carolina State Board of Health, they listed the five leading killers in this county as: Heart and blood vessels, 78;

cancer, 16; accidents, 4; and influenza and pneumonia, 3.

For the state as a whole, heart and blood vessel disease account for 52.2% of all deaths, with cancer second, accidents, third, influenza and pneumonia fourth, and prematurity fifth. Nationally, heart disease causes 54% of all deaths, with diabetes in fifth place.



WINTER—The sidewalks of Boone were covered with snow Saturday morning. The weather failed to halt business, and those who ventured out tromped out one-way paths as they went about their business. Most cars had chains on.—Staff photo.

SNOW, FRIGID WAVE SWEEPS REGION

Winter's Icy Breath Plummets Mercury To -0; Six Inches Snow

Winter made itself felt last week in Boone, by dropping the temperature to below zero, and dumping about six inches of snow on the area.

Following several days of fairly moderate weather, a rain beginning in the early morning of January 19 fell most of the day. Just after mid-afternoon, the temperature began dropping from a high of 39 to a low of 11, changing the rain into snow and ice. The wind caused the temperature to feel even colder.

By Friday morning, the weather bureau station in Boone reported a precipitation (rain and melted snow and ice) of 4.3 of an inch for the previous 24-hour period. About three inches of snow was included in this report.

The next morning another inch was reported and the temperature had dropped to 6 degrees. The high for the period was 18.

Saturday night, the bureau reported the temperature dropped to minus-two, with reports from other sources saying it went as low as minus-ten. Another two inches of snow gave the area its six inches. The temperature was standing at 15 at the 6 p. m. reading time Sunday.

Snow flurries continued at times during Sunday and Monday, but left only a trace to be added.

Several householders reported frozen water lines. Some car owners were seen walking because of balky car engines, and chains were used by most travelers in town.

Winds whipped the snow about, and some drifts were noted.

Sleigh riding was enjoyed by many on the various slopes and some streets about town. Some even had their skis out trying out the "runs" on some of the hills.

Shortly after noon Tuesday, the temperature had risen to 35 degrees, but was back at 20 by 6 o'clock, and still dropping.

Polio March Next Tuesday

Mrs. John H. Council and Mrs. Hadley Wilson, co-chairmen of the Mothers' March for the New March of Dimes campaign, have announced that the march will take place on Tuesday night, January 31, from 7:00 to 8:30 o'clock.

Mothers from various areas in Boone will call on residents for contributions. The money will go to fight against crippling diseases—birth defects, arthritis, and polio.

They ask that residents leave porch lights on and that they say "Yes" to the Mothers' Marcher when she calls.

Revenue Agent Tells Of Different Forms Available For Tax Payers

The income requirements and the three tax forms provided for individuals in filing their 1960 Federal income tax returns were explained today by Internal Revenue Agent C. P. Haney of the North Wilkesboro office of Internal Revenue.

Mr. Haney said that every citizen or resident of the United States must file an income tax return of under 65 years of age with a gross income in 1960 of \$600 or more, or, if 65 years of age or over with a gross income of \$1,200, or more.

To aid taxpayers in selecting the income tax form that best suits their needs Mr. Haney provided the following information:

Form 1040A—This is the easiest form if a taxpayer is eligible to use it. One of the special features (Continued from page two)

Blowing Rock Chamber Of Commerce Elects Officers

Louis H. Smith was elected president of the Blowing Rock Chamber of Commerce at the January meeting of the board of directors. Serving with him as officers during 1961 will be Norman Pitts, vice president, and John Goodwin, treasurer. Mrs. Helen B. Clear is secretary.

Directors, who were elected by mail ballot last year are: Mr. Smith, Mr. Pitts, Mr. Goodwin, Dr. A. P. Kephart, Harry Robbins, Larry Walker, and Rathmell E. Wilson.

Associate directors are W. W. Baker, Elie S. Mattar, Spencer Robbins, and George B. Taylor.

Committees appointed by President Smith are:

Advertising—Harry Robbins, chairman; Rathmell E. Wilson, Larry Walker.

Budget and Finance—Norman Pitts, chairman; R. B. Hardin, Harry Robbins.

Conventions—Elie S. Mattar, chairman, G. Sidney Pickard, R. B. Hardin, George Taylor.

Highway—Spencer Robbins, chairman, Norman Pitts, Rathmell E. Wilson.

Membership—Louis H. Smith, chairman, Lloyd S. Robbins, Howard Barnwell.

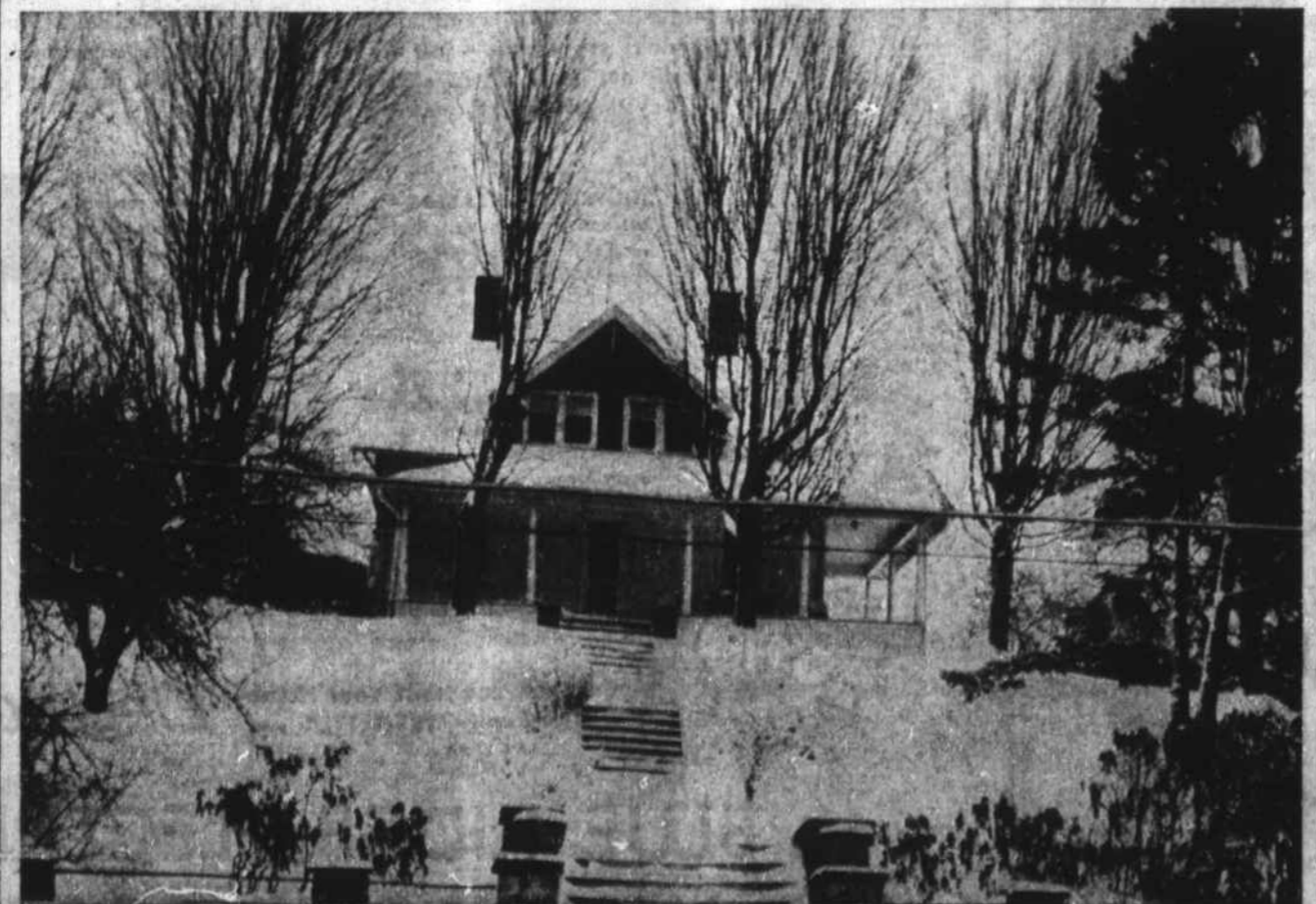
PRESENTS PORTRAIT OF DR. DOUGHERTY

A. T. Adams, Cashier of the Northwestern Bank at Boone, on behalf of that bank, presented to the stockholders a portrait of the late Dr. B. B. Dougherty, president of the Northwestern Bank from 1945 to 1957.

The portrait was accepted with appreciation and special recognition of Dr. Dougherty's interest in and service to the bank.

000,000.00. Part of this increase was due to the State of North Carolina being able to put money on time deposit with the banks in the State again.

The demand for money in our territory continued high. We handled over 85,000 notes. Twenty-five thousand of this number were handled by our Installment Loan Department. Profits were the highest in the history of the bank. We declared dividends of \$240, (Continued from page two)



PICTURE OF SEASON.—Mrs. Paul Coffey's house was a greeting card scene following the week end snow. The leafless trees stood out against a white background, while the rhododendron leaves in the foreground drooped in the chilling cold.—Staff photo.