



ALAN H. NEWCOMB

Alan Newcomb C of C Speaker

Alan Newcomb, television personality of WBTB, Charlotte, will be guest speaker at the monthly membership-ladies' day meeting of the Boone Chamber of Commerce, Tuesday noon, June 13, it was announced by Herman W. Wilcox, Chamber president.

A full course dinner is being prepared at the Daniel Boone Inn for the occasion, and Mr. Wilcox urges that members bring their wives or girl friends.

Mr. Wilcox said, "Mr. Newcomb has done much to introduce our area to his viewers. He is one of the South's most outstanding and experienced speakers."

Mr. Newcomb was born in Ohio, but grew up near Asheville. He attended the Ohio Wesleyan University, where he majored in speech and dramatics. He received his B. A. from that institution in 1942. The speaker was liberated as a German war prisoner by the Russian army at the end of World War II. He spent two weeks with the Russians, and has been inter-

Late Spring Flowers, Early Summer Blooms Make Lavish Mountain Scene

By MIRIAM RABB (Travel Editor)

Late spring flowers and the first blossoms of purple (Catawba) rhododendron, flame azalea and laurel—"big three" which make a lavish color display through late June—now decorate North Carolina's mountain vacationlands.

Reports this week from the Blue Ridge Parkway, Great Smoky Mountains National Park, National Forest Service and resorts of Western North Carolina indicate that the showiest display of the "big three" in most sections of the mountains will be underway around June 10, and that earlier varieties of flowers are lasting later than usual.

Flame azalea and Catawba rhododendron are appearing at elevations up to 3,500 feet, and laurel is opening at lower altitudes.

At elevations above 3,000 feet throughout the mountains, Fraser magnolia, the small pink azalea vaseyi and Carolina rhododendron, blackberry, buckeye, pin cherry, serviceberry and many varieties of ground flowers are beautiful now. Flame azalea is reported in bloom at several points along the Blue Ridge Parkway and in Blowing Rock. There is a good display of laurel at elevations up to 2,000 feet along U.S. 64 in the Cashiers vicinity, with peak bloom for the area predicted for about June 10. Roads and trails at middle to high elevations in the Great Smoky Mountains National Park are excellent for viewing spring flowers now. Park naturalists expect Catawba rhododendron to be at its best between June 12-16, with flame azalea following closely.

Some of the best points for seeing spring flowers and the first flame azalea and Catawba rhododendron along the Blue Ridge Parkway are between Oteen and the Craggies, between Soco Gap and Raven Fork, the Crabtree Falls nature trail, and the Doughnut Park area. In the Craggies, the mile-high natural gardens of Catawba rhododendron usually bloom shortly after mid-June.

The famous natural gardens of Catawba rhododendron on the 6,285-foot crest of Roan Mountain bloom during the third and fourth week in June. The 15th annual North Carolina Rhododendron

Blueberry Recipes Given

Eat blueberries as a fruit course or on cereal for breakfast. Serve them as an appetizer, or in salads and desserts for lunch or supper. Now is a good time to buy blueberries in quantity for good eating and freezing.

Mrs. S. Virginia Wilson, food and nutrition specialist for the N. C. Agricultural Extension Service, suggests you try these recipes while blueberries are plentiful.

Blueberry Delight
Dissolve 1 package gelatin (lemon flavored) in 1/2 cup boiling water; let stand. Mix an 8 ounce package of cream cheese with 16 ounces of cottage cheese; blend by mashing through a wire strainer. Fold 1/2 pint whipping cream, whipped. Mix in dissolved gelatin till smooth. Should fill 8 custard cups. Refrigerate until firm. When ready to serve, unmold on a platter.

Waffles With Blueberries
1 3/4 cup flour
1 1/4 cup milk

132 lawyers term Cuba landing illegal.

132 Lawyers Term Cuba Landing Illegal

EXPERT REPAIRS RADIO - TV

Dealers for WELBILT RANGES SYLVANIA TV Complete Line Motorola Auto Radios Approved Motorola Radio TV Service Station Approved for Financing through the Blue Ridge Electric Membership Corporation

D. Glenn Hodges



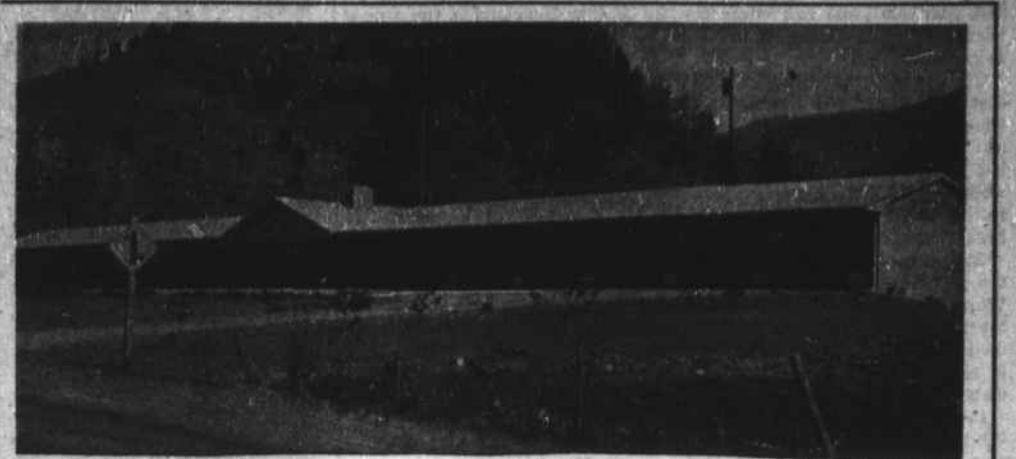
● LIFE INSURANCE ● DISABILITY INCOME ● ACCIDENT & SICKNESS

Rt. 3 - Boone AM 4-8376

REPRESENTING OCCIDENTAL Life Insurance Company OF NORTH CAROLINA HOME OFFICE - RALEIGH

JULY DRAFT
The Defense Department has asked that 8,000 men be inducted into the Army during July. This is the first draft request since April, when 1,500 men were called up.

CHAIR WAITING
If Canada accepts President Kennedy's invitation to join the Organization of American States, there will be no delay in seating her delegate. This word comes not from the O. A. S. protocol section, but from the storeroom. There, in the cel-



Boone's Newest & Most Modern MOTEL

Welcomes the 1961 Carolinas Open to Boone

- Double Beds
- Wall to Wall Carpeting
- TV in Every Room
- Glass Enclosed Showers
- Completely Modern

Mr. and Mrs. E. H. Kiziah, Owner-Operators

Highland Hills Motel

Highway 105 Boone, N. C.

Boone's Newest and Best!



A Completely Modern Restaurant

Bringing the Finest Food and Gracious Service To Boone's Citizens and Visitors Alike



STEAKS — CHOPS — COUNTRY HAM — SEAFOOD

Try Our Delicious Ham Biscuits — Home-Made Pies

We Feature a Menu as Good as the Best ... Better Than the Rest

Curb Service
Serving from 6:00 A. M. to Midnight

MR. & MRS. FRANK NORRIS



Welcome Golfers to the 1961 CAROLINAS OPEN and to BOONE

town HOUSE RESTAURANT

Blowing Rock Highway

Boone, N. C.