

Commendation List Released At AHS

Students awarded commendation letters for the past grading period at Appalachian High School were listed this week by Principal R. R. Blanton. The list:

Senior—Barbara Barnes, English IV; David Brown, agriculture IV, English IV; Edward Brown, band; Jimmy Cottrell, English IV, chorus; Polly Clawson, shorthand II; Joe David Critcher, agriculture IV, chorus; Mack Critcher, agriculture IV; Bartlett Dougherty, English IV, chorus;

Carolyn Hoover, trigonometry; Carolyn Greene, English IV; Lee Ella Hagaman, shorthand I; Steve Hamilton, English IV, world history; William High, band, chorus; Michael Johnson, Algebra II; Walter Johnson, algebra II; Walter Lewis, agriculture II; Nancy Lookabill, shorthand II; Bobbie McGuire, library science; June Maine, Bookkeeping; Barbara Moretz, English IV; Kathryn Mast, chorus;

Keith Norris, agriculture IV; Joyce Ragan, bookkeeping; Curtis Richardson, chorus, band; Patty Robinson, trigonometry; Shirley Smitherman, bookkeeping; Jerry Tester, chorus; Joe Todd, chorus; Norma Townsend, library science; Billy Wellborn, bookkeeping, algebra II, world history.

Juniors—Gary Brown, English III; Buddy Carroll, agriculture III; Wanda Coffey, English III; Toi Cooke, chorus; Mack Critcher, plane geometry; Diana Warman, plane geometry, French II;

Graydon Eggers, band; Louise Eller, English III; Jim Greene, agriculture IV; Pam Hamby, band; Mack Hampton, typing II; Marilyn Harmon, French II; Betsy Isley, band; Alton Johnson, plane geometry; J. E. Joines, typing I; David Lewis, algebra II, English III; Linda McKarher, English III; Barbara Mast, band; Annie Miller, shorthand I; Claude Norris, English III; Willie Watson, agriculture III; Joe Williams, English III; Alice Wilson, English III;

Janie Price, band, French II, English III, plane geometry; Becky Russell, French II, typing II, plane geometry; R. D. Shoemaker, plane geometry; Johnny Stacy, plane geometry; Buddy Storie, algebra II; Mable Townsend, English III, reading III; Gail Wilson, chorus.

Sophomores—Richard Agle, biology; Tommy Bentley, algebra I, world history; James Bingham, band; Terry Bryan, agriculture II; Kimberley Chamb-

lin, algebra I; Gerald Clawson, typing I; Danny Cole, agriculture II; Johnny Cooke, biology; Denver Cornett, biology, algebra I; Rosalind Covington, physical education II; Donna Cook, English II; Joyce Edmisten, English II; Maria Erneston, chorus, algebra II; Barry Faries, English II;

Paul Gragg, agriculture II and study period; Billy Jack Greene, reading II; Harlen Greene, algebra II, biology, reading II; Horace Greene, reading II; Judy Ann Greene, physical education II; Kay Greene, Spanish I; Nancy Greene, biology; Mack Greer, agriculture II and study period; Perry Greene, physical education II; Dean Hardy, physical education II; Jimmy Hayes, biology, world history.

Sarah Hodges, English II; Mary Honeycutt, biology; Johnny Jones, biology; Wanda Jones, English II; Mackie Mast, biology; Beverly Meekins, biology, English II; Allan Moretz, algebra II; Billy Moretz, agriculture II; Janice Nichols, English II; Denny Norris, agriculture II and study period.

Paul Payne, reading II; Harold Preswood, English II, biology; Cassandra Pritchett, algebra II; Jimmy Proffitt, agriculture II; Gary Ray, English II; Jerry Ray, algebra II; Judy Rayfield, band; Betty Robbins, physical education II; Russell Roark, algebra I; Elizabeth Ross, physical education II, biology; Mickey Seaward, algebra II; Patty Sue Spencer, algebra I; Gregory Stanbery, algebra II, Biology; Larry Stanbery, English II, algebra II, biology;

Glenn Triplett, agriculture II; Mary Wagon, biology; Joe Ward, world history; Sandra Winebarger, English II; Billie Jo Winkler, English II; Troy Wolfe, English II.

Freshmen—Beatrice Auton, English I; Harvey Bentley, general math; Nancy Bodenhamer, physical education I; Ted Brown, English I; Stanley Carol, general math, English I, agriculture I; James Caudill, English I (spelling); Jerry Cheek, English I; Elaine Clawson, English I, physical education I; Nina Clawson, world history; Johnny Coe, world history; Rodney Critcher, reading I;

Linda Dotson, physical education I; Linda Gragg, English I; Charlene Greene, world history, English I; Gary Paul Greene, agriculture I; James Greer, physical education I; Diane Hagaman, English I, world history; Randy Hart, physical education I;

Frank Hayes, physical education I, world history, algebra I, English I; Gail Hayes, English I; Lee Jackson, physical education I; Keith Krider, English I; Lou Ann Lowrance, English I; Linda Lyons, algebra I; Phyllis MacBryde, world history, biology, English I; Connie Miller, English I;

Imogene Miller, English I; Garry Norris, agriculture I; David Payne, general math; Russell Robinson, band, general science; Steve Rominger, general math; Michael Slnk, world history, algebra I;

Stacy Teague, English I; Billy Trivette, English I; Betty Lois Watson, English I; Patty Wilkie, English I, algebra I, physical education I; Clarence Wilson, world history; Mike Wilson, general math; Roy Wilson, English I; Susan Young, English I.

Beta Club Induction

Fifteen sophomores were inducted into the Appalachian High School Beta Club in an impressive assembly program on Thursday, February 28. After the student body president, Baker Edmisten, called the meeting to order, the chorus, under the direction of J. E. Wilson, Jr., sang two numbers. Jane Buckland gave the devotional thought and prayer.

Beta Club president, Johnny

Stacy, stated the purpose of the program and welcomed new members and their parents. Ralph Lane Beshears spoke briefly on the subject, "What Is the Beta Club?" and Janie Price discussed the meaning of the Beta emblem. Patty Oland, vice president, delivered the main address: "It's Our World in Twenty-five Years."

After Johnny Stacy administered the pledge, Nancy Pease, Beta secretary, presented membership certificates and pins to the following new members: Paul Bagley, James Bingham, Rosalind Covington, Carole Lee Critcher, Maria Erneston, Kay Greene, Mackie Mast, Beverly Meekins, Harold Preswood, Cassandra Pritchett, Jerry Ray, Mickey Seaward, Larry Stanbery, and Jeanette Wagner.

New members, their parents, and the faculty were the guests of the club at a reception in the library following the program.

Beta Club members are selected on the basis of good mentality and character, creditable achievement, and commendable attitude. They must have a "B" average and must have been students at Appalachian High for the two semesters preceding selection. Approximately 10 per cent of the sophomore class are selected for membership.

Senator Jordan Appointed State Easter Seal Chairman

Chapel Hill—Senator John R. Jordan, Jr. of Raleigh has been named State Campaign Chairman for the 1963 Easter Seal Appeal. Clarence E. Whitefield of Durham, president of the North Carolina Society for Crippled Children and Adults, announced the appointment. Whitefield stated: "The Easter Seal Society is honored to have Senator Jordan as our State Chairman. The fact that he is willing to assume this responsibility, particularly with the legislature in session, is in itself a testimonial to the worthiness of our work. His leadership will assure a successful campaign." The Easter Seal drive begins on March 7 and ends on Easter Day.



Jordan, who has represented the 13th District in the State Senate for the 1959, 1961, and present sessions, is prominent in political and legal circles throughout the state. A graduate of the University of North Carolina, he also attended Chowan College and North Carolina State. He received his law degree from the University of North Carolina in 1948. Jordan succeeds H. Clifton Blue who served as the 1962 State Chairman. The 1963 appeal seeks to raise \$200,000.00.



GOOD YEAR

Tire Trades!

New Goodyear Tires

3-T Sure Grip
Rear Tractor TIRES
by
GOOD YEAR
\$30.95 Size 8-24
With Recappable Tire
Reg. No Trade-In \$39.30

TRIPLE-RIB
FRONT Tractor Tire
\$12.25 400x15 4 Ply
Plus Tax And Old Tire

Famed 3-rib design for easier steering, better flotation, longer life.

TRAILERLOAD

GOOD YEAR

Nylons - Rayons
Tufsyn - Whitewalls
Blackwalls - Tube Type - Tubeless

\$9.95

670x15
Tube Type
Black

All-Weather "42"



GOOD YEAR

Only \$1.25 a week puts a pair on your car!

GOOD YEAR SEAL RETREADS

Perfect time to de-winterize your car! Save now with our bumper-to-bumper service!

SPRING CHANGE-OVER SPECIALS!

50% OFF
DELUXE
Floor Mats
\$2.48
\$4.95 Value
Choice of Colors

3-T NYLON WHITEWALL TUBELESS
with new TUFYSYN rubber
670x15 Black 3-T NYLON **\$12.95**
All Weather

Car - Truck or Tractor All-Weather Battery
'49-'54 6V Cars **\$9.95**
'55-'60 12V Cars **\$14.50**

USE YOUR OLD TIRES as the **Down Payment** on a set of **New Goodyear Tires!**

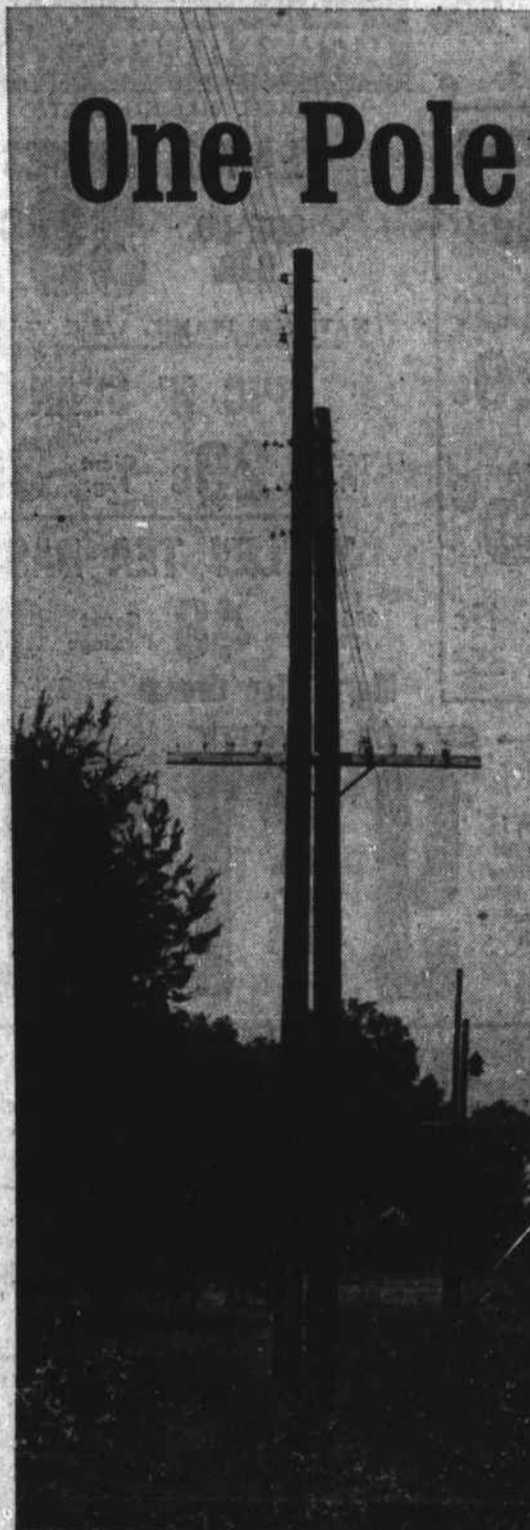
LIMITED SUPPLY Change-Overs
\$2.95 AND UP

Look for this seal... your assurance of quality!

- Goodyear approved tread design
- Goodyear quality tread materials
- Goodyear's recommended processing methods

The Goodyear Seal means extra miles of safer, trouble-free driving. Get the retreads you can trust and save with safety today!

One Pole Too Many



The shorter pole—owned by a rural electric cooperative—was built in 1949 to serve a rural home.

Then—10 years later—the area became more densely populated and was annexed into a town. That's when the taller pole was put up by a commercial, investor-owned power company—the same company which would not serve the area when it was sparsely populated.

The company and the town said to the co-op, "Get out."

Fair? Hardly. What's more, it isn't just the cooperatives who suffer when their members are taken away by these duplicate lines—although it means one less member to share the cost of electric service. All consumers lose. After all, the cost of the unnecessary power company lines is a part of its customers' electric bills.

North Carolina's rural electric cooperatives believe they—and the rest of the public—should be protected from wasteful duplication which makes the cost of electric service higher than it really should be.

Blue Ridge Electric Membership Corp.

SWOFFORD'S, Inc.

313 W. King St.

Boone, N. C.

264-3001