

Blue Devil Matmen Successfully Defend Crown

Emphasis On Travel Called Biggest Need

Asheville—The biggest need in the Asheville area today is more emphasis on the travel industry," state Democratic party chairman Bert Bennett of Winston-Salem told an audience of party leaders here.

"There are many groups, associations and business organizations who are continually plugging for all phases of an expanded tourist and travel business, but all of these groups need to be coordinated toward the same direction, even if it means a separate department.

"The advertising division of the Department of Conservation and Development is doing a good job, but more coordination and direction to bring all of these groups together is essential, if this great vacation area is to receive the business it is capable of receiving."

Bennett pointed out that North Carolina is a natural for tourists and conventions, but there are very few areas in the state that can accommodate large conventions and meetings.

"Many civic leaders feel that a community has to have a manufacturing plant for additional income. But by taking advantage of every opportunity, the expansion of the tourist and convention trade could result in being any western community's number-one source of in-

come," he said. "All of these groups, trade associations, travel organizations, and communities get together to promote the advantages of the entire western section. We have plenty to show the visitor. We have the climate, we have the know-how, all we need to do now is to coordinate all of these activities in the right direction.

"This is where our state can come in . . . by assisting in proper planning and coordination," Bennett added.

Rites Are Held For Mrs. Brewer

Mrs. Arvilla Minton Brewer, 64, of Rt. 3, Blowing Rock, wife of Rudy V. Brewer, died Sunday, March 10, at the Blowing Rock Hospital after a short illness.

Surviving are her husband; four daughters, Misses Vera L. and Bernice H. Brewer, both of the home and Mrs. Margaret Hodge and Mrs. Emily B. Wood, both of Elizabethton, Tenn.; three sons, Warren and Wilber Brewer, both of Lenoir, and Dale Brewer of the home; five brothers, Claude and the Rev. Grady Minton, both of Vilas, Dave Minton of Valle Crucis, Vilas G. Minton of Greenville, S. C. and Charlie Minton of West Jefferson; three sisters, Mrs. Bertie Harris of Lenoir and Mrs. Effie Hodges and Mrs. Lucy Moody, both of Vilas; and 11 grandchildren.

Funeral services were conducted Tuesday, March 12, at 1 o'clock at the Shulls Mills Baptist Church by the Rev. Earl Greer, Rev. Raymond Hendrix and Rev. Ed Crump. Burial was in the White cemetery.

GOVERNMENT RUN SCHOOLS

It was announced that the Federal Government will operate racially integrated schools at six military bases in the South.

School districts around these bases will no longer receive the federal funds given to districts crowded with children of military families and civilian Government workers.

The cost of the program is estimated at 2 million dollars.

In 1961, according to the N. C. State Board of Health, 52.5% of all deaths in the state were caused by diseases of the heart and blood vessels. Cancer caused 12.3% and accidents 7% of the total 37,701 Tar Heel deaths.

Italy and Netherlands won't sign new trade pact with French colonies.

By WILLIAM HIGH

The Appalachian High School Blue Devil wrestlers racked up seventy-nine team points and won the North Carolina High School Athletic Association wrestling tournament held at High Point on Friday and Saturday, March 8-9. Climaxing their eleventh consecutive undefeated season the Appalachian wrestlers won their second straight state tournament and the sixth in the last eleven years.

Appalachian could have packed up and gone home after the Saturday afternoon matches because the tournament was sew-

ed up before the finals. Strong bids were made by Burlington, Goldsboro, and Myers Park, but when it was over Appalachian held a 28-point lead over Burlington, the nearest competitor.

Appalachian led the way with four state champions. They were junior Royce Carroll (120 lbs.), senior Johnny Cook (127 lbs.), junior Alton Johnson (133 lbs.) and senior Baker Edmisten (165 lbs.).

Twenty teams were represented at the tournament with any number from one wrestler from New Bern and Garinger, to eleven wrestlers from Appalachian. The results of the

tournament were as follows: Appalachian 79; Burlington 51; Myers Park, 42; Goldsboro, 41; Page 31; Greensboro Grimsley, 28; South Mecklenburg, 24; Jacksonville, 23; Greenville, 19; Kingston, 15; Beaver Creek, 13; Elkin, 13; New Bern, 12; Salisbury, 11; R. J. Reynolds, 1; High Point Central 1; Lexington, 0; Cary, 0; Garinger, 0; and North Mecklenburg, 0.

The 132-match tournament got underway Friday afternoon with twelve preliminary matches. The quarter-finals took place Friday night with forty-eight matches being wrestled. The winners in the quarter-

finals wrestled on Saturday morning in the semi-finals. The wrestlers who lost to the winners in the semi-finals wrestled Saturday afternoon in the consolation eliminations. The winners in the semi-finals and the consolation eliminations wrestled Saturday night in the finals. Team points were scored on the basis of ten points for all first place, seven points for a second place, four points for a third place, and two points for a fourth place finish. One point was awarded in each round for advancement. One additional point was awarded for a fall, forfeit, or default.

This tournament broke a trend which started two years ago. The last two tournaments were decided by one and two points, respectively. Two years ago Thomasville defeated Appalachian by a one-point margin. Last year the Apps came back and defeated Asheboro by a two-point margin.

First, second, third, and fourth place winners were as follows:

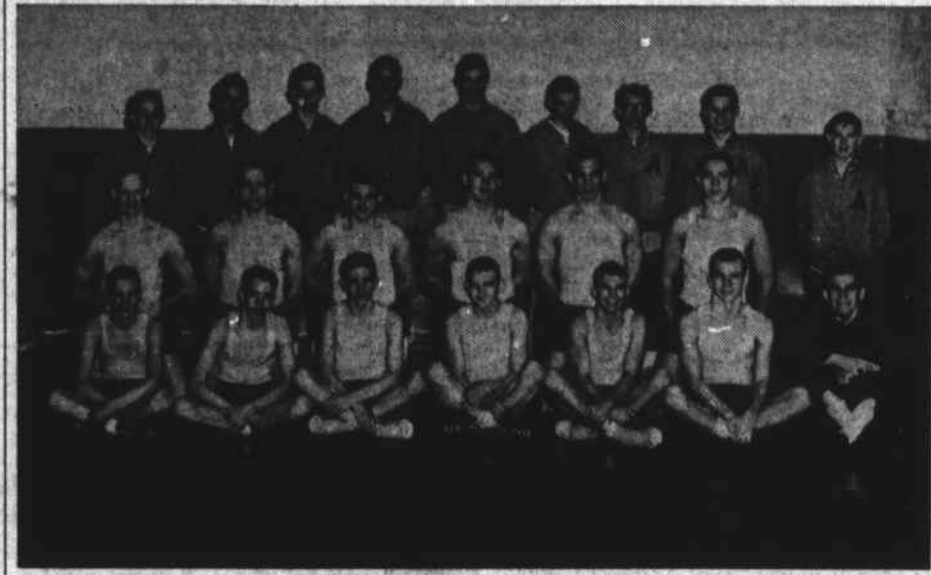
95 lb. class—Joe Moore (NB); Gary Parson (BC); Johnny Cooke (A); Ronnie Hendrick (Gr'b.).

103 lb. class—Bill Convey (MP); Jimmy Simkins (Gr'v); Tommy Thrower (SM); Ernie Radford (G).

112 lb. class—Chuck Stedman (B); Mack Critcher (A); Steve Byrd (SM); Joe Nassef (G).

120 lb. class—Royce Carroll (A); Paul Wiggins (J); Mike White (MP); Kenneth Duty (K).

127 lb. class—Johnny Cook (A); Bill Kennerly (S); Jimmy Whitmore (G); Phil Chapman



Left to right, front row: Jerry Critcher, Mack Critcher, Johnny Stacy, Royce Carroll, Johnny Cook, Alton Johnson, William Hight, manager; second row: Ronnie Smith, Gary Hodges, Gary Brown, Baker Edmisten, Buddy

Ohio State Glee Club Is Coming

The Ohio State Men's Glee Club will appear in a concert Wednesday evening, March 20, at 8:15 in the Fine Arts Auditorium. The group is sponsored by the Music Department and the Artist and Lecture Series of Appalachian State Teachers College.

The Glee Club is under the direction of Norman Staiger, a professor in the School of Music at Ohio State University. Professor Staiger has sung on several nationally famous radio programs, appeared in a Carnegie Hall concert, and received his radio choral training with Lyn Murray.

The group appeared on the Ed Sullivan show in 1957 and during the 1958-59 season on "The Voice of Firestone-TV." The club's concerts combine versatility with showmanship and excellent musicianship. A typical program ranges from Gregorian chants to current Broadway musical arrangements.

The group will also appear at Appalachian High School assembly Thursday morning, March 21, at 9 o'clock.



Dining here is a grand treat for the family

Delight your family with dinner here. Our courteous service and fine, tastefully prepared foods are a treat for Mom and the youngsters, too. Dine here once, and you'll come back often.

DRIVE-IN SERVICE FROM 4:00 P. M. FOR THOSE WHO WISH IT



EVEN Spring Is Lovelier from Your Own Window

Yes, even those first sights and sounds of Spring take on added joy when you see and hear them from your own window.

Resolve now never to greet another Spring from somebody else's window!

Come in and talk it over—we'll show you how easily your Savings can grow into a window of your own.

Officers and Directors

H. Grady Farthing, President	R. C. Rivers, Jr., Vice-President	James Marsh, Secretary-Treasurer
Walter Greene	H. P. Holshouser	Guy Hunt
Howard Mast	W. M. Matheson	Wayne Richardson

Watauga Savings & Loan Association

OPPOSITE POST OFFICE BOONE, N. C.

State Tourney Set For Boone

By WILLIAM HIGH
A rumor which was circulating in High Point that the state tournament will be held in Boone next year has been verified by Coach Steve Gabriel. Appalachian teams have always dominated the tournament, and Appalachian fans who could not go have been disappointed. Next year everyone will have a chance to see Appalachian. If you like the idea of having the state tournament in Boone, come out and fill the gym next March and Boone will always be at the head of the list of locations for the tournament.

Summer Jobs Are Needed

A large number of undergraduate students at Appalachian State Teachers College desire summer jobs in their home towns and communities during the summer months, it was announced recently by Bob Breitenstein, dean of men at Appalachian.

He said that Appalachian has young people from 84 of the 100 counties in the state, with about 16 of the eastern counties not represented in the student

body. Breitenstein declared that he has had a large number of requests from the students, and the majority of the requests have come from deserving young people who need to work this summer to return to school next fall.

Anyone that might have available jobs for these young people are invited to write Bob Breitenstein, Dean of Men, Appalachian State Teachers College, Boone, N. C.

Lion-Size Values . . . Lamb-Like Prices!



MOTOROLA TABLE TV \$179.95 with trade

Hand-wired power M chassis . . . precision crafted with modern hand and dip soldering for long life. Designed to operate at low power drain. This means economical and cool chassis operation . . . great component reliability. 18,000 volts of picture power deliver sharp, crisp picture.

Motorola circuit sentry . . . protects every tube against power overload due to tube burnouts, accidental shorts and current surge. Assures Motorola reliability.

Motorola circuit guard . . . in case of temporary power overload, guard automatically shuts off the receiver. Push guard button and set comes on again.

Tinted eye-shade filter glass . . . improves picture contrast while reducing reflections.

Matching Base Available

One-Year Guarantee

Tubes — Parts & Service
Free replacement plus \$5 if picture tube fails
Free replacement plus \$1 if small tubes or parts fail
Free TV set if transformer fails

For Our Expert ELECTRONIC SERVICE

Phone 264-8721

Gray Norris will gladly serve your needs in TV - Radio - Record Player and other electronics repairs.

MODERN APPLIANCE COMPANY

418 W. King St. Boone, N. C.

Town House Restaurant & Steak House

Blowing Rock Road — Boone, N. C.