

Burley Group To Set Opening Date Oct. 21

Mt. Sterling, Ky. — The first meeting of the 1963 Burley Sales Committee will be held at the offices of the Burley Tobacco Growers Cooperative Association, 620 South Broadway, Lexington, Ky., at 11 a.m., October 21, to determine opening date, selling hours, and Christmas holidays for the 1963-64 burley tobacco market, according to an announcement by Albert Clay, president of the Burley Auction Warehouse Association and chairman of the Burley Sales Committee.

Members of the Committee are: Park Bernard, Abingdon, Va., W. H. Buckles, Lexington, Ky., Charles P. Clarke, Maysville, Ky., J. C. Dean, Knoxville, Tenn., and W. G. Vann, Greeneville, Tenn., representing warehouse interests, and George L. Johnson, Kentucky Department of Agriculture, Matt Jennings, Tennessee Department of Agriculture, John W. Koon, Kentucky Farm Bureau Federation, J. W. McCord, tobacco grower of Fayette County, Kentucky, and W. L. Steton, Burley Tobacco Growers Cooperative Association, representing growers' interests.

Miss Jessup On L-M Faculty

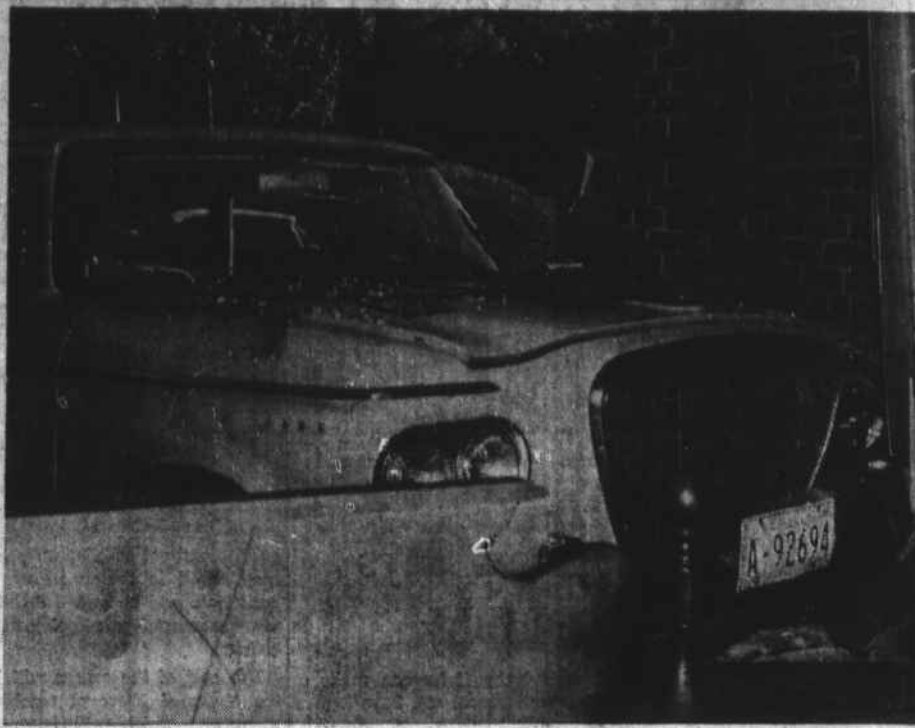
Banner Elk, N. C. — Academic Dean Lewis M. Hall announces the appointment of Miss Rachel Jessup to the Lees-McRae faculty.

She hails from Greensboro where she received her early education in the Greensboro Public Schools and was graduated from Greensboro Grimsley Senior High School. Her undergraduate work was done at Greensboro College where she majored in history, and also in religion and philosophy. Wake Forest College awarded her a Graduate Fellowship, and she entered there in September, 1962. In August, 1963, she was graduated with a Master of Arts degree in history. Beginning in September, 1963, she is employed by Lees-McRae College as an instructor in European Civilization.

All interested persons are invited to appear before the Committee at this meeting and make recommendations.

Mr. Clay issued a warning to tobacco growers against stripping tobacco before all stems are completely cured. To get top prices, farmers should exercise extreme caution in preparing the crop for

market. Tobacco stripped with fat stems or excess moisture will not be supported by the U. S. Department of Agriculture and will sell only at discount prices, Clay said. He also pointed out that with a growing demand for burley at home and abroad it is imperative that growers bring to market a crop that is in top selling condition.



This 1962 Studebaker rolled down the courthouse steps Friday after its parking brakes gave way, and crashed into the front of Greene Furniture Store on King Street.

Driverless Car Plows Into Local Store In Latest Freak Accident

By CLARK COX

Freak accidents seem to have been the rule rather than the exception in Watauga County during the past several weeks.

The latest of them occurred Friday morning at about 9:30 when a 1962 Studebaker Lark Station Wagon, owned by the Pest Control Division of the U. S. Department of Agriculture, rolled about 250 feet, from the courthouse parking lot across the courthouse lawn, down the steps, between two other vehicles which were moving in opposite directions on West King Street, and into a plate glass window in the front of Greene's Furniture Store, where it finally came to a stop.

Damages to the store front were estimated at \$300, while a first estimate of damages to furniture inside the store amounted to about \$100.

The extent of damage to the automobile itself was not immediately determined, but aside from several sizeable dents in the sheet metal on the front of the car, it did not seem to be damaged too severely.

Wiley R. Johnson, who had parked the car in the courthouse lot on Thursday and left it there overnight, stated that the car's parking brakes had previously shown a tendency to give way after having been applied for reasonably long periods. This is apparently what happened Friday morning.

No charges were preferred in the accident. As Chief of the Boone Police Department Hubert Thomas, who investigated the accident, said, "Who was there to charge? And with what?"

The zany event recalled a similar accident in May of this year, when a heavily-loaded lumber truck went out of control outside of Boone and careened crazily through the busy streets, damaging nine cars and finally overturning, but injuring no one.

But Watauga County has had its share—and much more—recently of freak occurrences of this nature. A few of the more significant ones occurred as follows:

During the period of little more than a week in late September, two major water mains

causing the loss of hundreds of thousands of gallons of water from the town's supply. Only fast thinking and hard work by city officials and workmen saved the day in both these cases and kept temporary water shortages to a minimum.

On September 13, an automobile operated by Mrs. Pinkie Shook of Banner Elk collided with a large rock which toppled from a roadbank on Highway 105 southwest of Boone and rolled into the road in front of the vehicle. No charges were preferred, of course, since a rock is hardly liable to legal indictment.

On September 12, a Highway Post Office Bus, en route to North Wilkesboro from Boone, overturned down a steep bank on Highway 421 after its brakes gave way, causing about \$3,000 damage and slight injuries to the driver. Again, no charges were filed.

(Continued to page 3, section C)

CHAMBER OF COMMERCE NOTES

\$3 Million Building Program Is Mentioned By Wilcox

By H. W. WILCOX, President Boone Chamber of Commerce

Already this year over 300 houses on the Blue Ridge Electric Membership Corp. system have been built.

New River Light & Power Co. reports service to 87 new homes on their system.

A reliable source reports that over \$3 million has been spent on construction in the county this year.

In what has been our greatest tourist season in the history of our county, Watauga County reports retail sales for May, 1963, of \$1,789,552, as compared to sales of \$1,656,675 for May, 1962. These sales were considerably above amounts reported by Ashe County, which has over 4,000 more citizens.

Many New Motel Units

Now in the planning stage are almost 100 new motel units which should be ready by next June. These include an addition to the Cardinal Motel and new motels by Joe Williams and W. R. Winkler. In spite of these continued new units, we come up short each season. There were more people than we could find

accommodations for this year.

Our annual Farm-City meeting November 14 at Cove Creek High School will perhaps be our biggest. Chamber of Commerce and Merchants Association officers and directors will be installed at this time. This will be our Chamber meeting for November.

Good News Coming

Proven facts show the following: A new factory which employs 100 persons brings to the town the following: 359 additional people, \$1 more school children, \$710,000 more personal income, 100 more households, \$229,000 more bank deposits, 3 more rental establishments, 97 more new cars registered, 65 more employed in non-manufacturing, and \$331,000 more retail sales per year. Multiply this by three and see what our new shoe factory is going to mean to us.

Members Paying Dues

Jones Garage, Outcrom of The Smokies, Greene Furniture Co., Dr. Gale F. Bate, First National Bank, Brown House and Cottages, W. J. McMahon, T&W Outboard, Cardinal Motel, Dr. G.

K. Moose, Dr. R. H. Harmon, J. F. Ayers, Raymond Jones, Miller Industries, Builders' Super Market, Appalachian Varsity Shop, Roy Blanton, Jr., Ralph Buchanna, Home Finance Co., V. C. Shore Produce Co., Dr. Len D. Hagaman, Sunset Motel, Winn-Dixie Store, Winkler Motor Co., Helen Underdown, Ralph Besbears, Warren Dotson, Nell Linney, Roy W. Ialey, Yedkin Valley Dairy, and Cabana Motel.

Cove Creek 4-H Officers

The Cove Creek High School 4-H Club met September 20. The club elected officers as follows: President, Janice Shipley; Vice-President, Earlie Michael; Secretary-Treasurer, Linda Brown; and Reporter, Phyllis Potter.

Hay fever season is worst since 1946.

Thoughts for fat people



Do too many calories add up to a "round figure," where you're concerned? Help cut down—with delicious Sealtest Diet Fortified Skim Milk! The refreshing goodness of whole milk — at a much lower "calorie count." Delightful!

IMPORTANT WHOLE MILK VALUES WITHOUT THE FAT
Pure, wholesome Sealtest Diet Fortified Skim Milk gives you the important vitamins of whole milk, the minerals and the protein — at only 88 calories per 8-ounce glass!

HIGHEST POSSIBLE QUALITY
Sealtest Diet Fortified Skim Milk is especially tested... and re-tested by trained men and women in ultramodern Sealtest plants. It is milk of the highest possible quality.

DELICIOUS FRESH FLAVOR
Trust Sealtest to give you that satisfying fresh-milk flavor, in the pure goodness of Sealtest Diet Fortified Skim Milk!



ENJOY THE NEW VISITOR CENTER ATOP

GRANDFATHER MOUNTAIN

PARKWAY - U. S. 221 AT LINVILLE

Carolina's Top Scene Attraction

Now five kinds of Chevrolets for all kinds of people!



JET-SMOOTH LUXURY CHEVROLET—For luxury-loving people. Rich new styling, finer appointments in all four series and 15 models. Engines up to 425 hp*, manual or Powerglide* transmissions.

NEW CHEVELLE—For pace-setting people. A totally new kind of car with small-car handling, big-car comfort! Styling that makes expensive cars jealous. Three series and 11 models, and a full choice of engine and transmission teams!

CHEVY II—For practical people. Chevy II with new V8 power* for fun-on-a-shoestring. Stretches the shoestring further with 4- and

6-cylinder engines. Chevy II's six models in two series all act like they're bigger, more expensive cars!

CORVAIR—For fun-loving people. More fun than ever from Corvair's new bigger engine! Same Corvair handling and riding ease in 9 models—including the 150-hp Turbocharged Spydere!

CORVETTE—For sports-minded people. Corvette now rides softer, smoother—but loses none of its gusto because its big V8 offers versions from 250 to 375 hp*!

Want to get together with other car-loving people? Go see your Chevrolet dealer... he likes all kinds!

*optional at extra cost

See five entirely different lines of cars at your Chevrolet Showroom — CHEVROLET, CHEVELLE, CHEVY II, CORVAIR & CORVETTE

ANDREWS CHEVROLET, INCORPORATED

North Depot St. Dealer License No. 1137 Boone, N. C.

One STOP Service

WE WRITE ALL LINES OF INSURANCE

- ✓ On Your Automobile
- ✓ On Your Home
- ✓ On Your Business
- ✓ On Your Life
- ✓ On Your Farm

LET US MAKE A SURVEY OF YOUR INSURANCE NEEDS.

IT SAVES YOU MONEY TO PUT YOUR INSURANCE UNDER THE

New Package Plans

Call or Write

Coe Insurance & Realty Company

AM 4-8256 — BOONE, N. C.