

## Population, Economy Of Boone Part Of Study Being Conducted

In a contract for the services of the North Carolina Department of Conservation and Development, Division of Community Planning, a study of Boone and its environs is presently being conducted, announced Boone Mayor Wade E. Brown and Dr. Lee Reynolds, chairman of the City Planning Board.

The first phase of the study is completed with the presentation to the city government of a prepared publication entitled "Population and Economy," which gives a multitude of statistics and outlines plans for the future growth and development of our city.

The booklet will be distributed to schools, business places, and professional offices through-

## Singer Of Year To Be Chosen

Mrs. Virginia W. Linney, Southeastern Regional Governor for the National Association of Teachers of Singing, left Friday for Laurinburg to hold the annual auditions for Singer of the Year.

The winner from each region will compete with other regional winners at the National Convention for national honors. The regional auditions were held at St. Andrews Presbyterian College.

out Boone in the near future, Brown said. Through an arrangement with the Federal government, a major portion of the cost of the study was borne by the Urban Renewal Administration of the Housing and Home Finance Agency.

Future items to be considered in the study include topogra-

## Farm Bureau News

By VERNE STRICKLAND

N. C. Farm Bureau Federation

We have had time now to reflect upon that infamous and stunning week-end. But though millions of words have already been written and spoken of it, a time will pass before we are struck by its full impact.

There have been words of disbelief, bewilderment, shock, revulsion and courage. And all were seemingly inadequate. So will these be.

It is over, yet just begun. A nation which reeled today rallies. She shook her head to clear the vision which allowed the blow to be struck. And she sees clearer because of it.

The cloak of shame will rot slowly. And perhaps bits of it will still cling when most of it falls away. We all put it on, and all wear it.

Underneath that cloak, though, there seems to beat a stronger heart. When times are worst,

man is at his best. And if there is not meaning yet, there is mandate. We must give purpose to that senseless loss. Action, not sorrow, will best help to atone for it.

I stood on a curb six-deep in shivering mourners as the slain President's body was borne past on that stark, black caisson. Behind me stood a young college girl with a companion.

"How do you feel?" the friend asked, as the ring of hooves drew nearer.

"I realize for the first time," she said, "that I'm an American."

And at that moment, I realized something, too. We have been brought to our knees in prayer, not in surrender. Then let us rise, not in regret, but in resolve.

Why worry about war and disease if you don't worry about automobile accidents?

Why worry about war and disease if you don't worry about automobile accidents?

Why worry about war and disease if you don't worry about automobile accidents?

## Dr. Moose Founded City's Oldest Retail Establishment

By CLARK COX

It is only fitting that the first in a series of articles on business and professional leaders in Watauga County should be devoted to the career of G. K. Moose—affectionately known as "Dr. Moose" by his many friends—who founded what is now Boone's oldest retail business establishment, the Boone Drug Company, in 1920.

Dr. Moose has since relinquished his ownership of the establishment to Drs. Wayne and O. K. Richardson, but he still works there part-time as a pharmacist.

Born in Cabarrus County, Moose attended Catawba College and the pharmacy school of George Washington University, also receiving a bachelor of laws degree from Georgetown University. He worked in the U. S. Treasury Department during the First World War before coming to Boone.

A member of the Episcopal Church, where he is a vestryman, Moose was for a number of years Chairman of the Board of Trustees of the Watauga County Hospital. He has also been a member of the County Red Cross Board of Directors since the Red Cross was organized here in the 1920's.

In addition, Moose was Town Clerk and a member of the Town Board of Commissioners for three terms.

Moose is married to the former Miss Effie Heffner of Burke

County, and they reside at 422 Grand Boulevard in Boone. They have one daughter, Mrs. E. Y. Marsh, Jr., of Charlotte, and three grandchildren.

"I've enjoyed living in the mountains," Moose said. "I feel that I've become a mountaineer myself. People here are much like the people in the rural community in which I was reared, and for that reason I've always felt at home in Boone. I'm very devoted to the people of Boone and Watauga County."

## Fashion News

Sling shoes seem to have come back into style as we see them on display in many of the shops. For the holidays and other gala occasions. They are made of satins or brocades and many of them are jeweled. Some show only the cut-out heel, but others are bare almost to the toes.

Other shoes are of snake skin and lizard. These come in different shades of color.

Taupe and other shades are favorites with fall buyers for walking shoes.

The average politician believes in service but by and for himself.

When a hard-headed business man offers you a bargain, think twice.

## AHS Band Will Present Winter Concert On December 12th

Boone's Ambassadors, the Appalachian High School Band, are preparing a winter concert to be presented Thursday, December 12, at 8 p. m. in the auditorium of the Appalachian Elementary School. Sharing performance duties on the program will be the Appalachian Junior Band composed primarily of students from the upper three grades of the Appalachian Elementary School.

Band director James Shugert reports that "the bands will present a standard program of concert band literature as well as music of the season." Several of the works to be presented by the senior band are repre-

sentative of the calibre of band music played at state band contests. The program to be presented is as follows:

**Appalachian Junior Band**  
Christmas March, Herfurth; Waltz of the Flowers, Tschalkowsky; Hymn of Freedom, Brahms; Rudolph the Red-Nosed Reindeer, Marks.  
**Appalachian High Band**  
Fantasia in G Major, Bach; Sea Pieces, MacDowell; The Standard of St. George, Alford; The Christmas Song, Torrie; Three Songs for Christmas, Grundman; Sleigh Ride, Anderson.

Admission prices will be 50c

for adults and 25c for students. All proceeds from the concert will be used to help defray expenses of sending the bands to state contests.

**\$250,000 WILLED TO CITY**  
Norwalk, Conn.—When Frank L. Chase, 82, died he left his entire estate to his home city. Making his income as a self-employed painter, Chase had invested in stocks and real estate, building a small fortune of \$250,000.

In the will, he had appointed three executors to advise the city how to spend the money.

DEMOCRAT ADS PAY



# SAVE ON FOOD HERE

SMITHEY'S is always headquarters for Christmas Foods. Our big Grocery Department is filled with all the good things that are associated with the Holiday Festivities. We welcome your patronage.



**FREE**  
5 POUND BAG OF  
**Sugar**

with \$12.00 or More  
Purchase of Dry Goods  
Limited Time Only

10% Off On Treats For  
Churches And Schools  
Bags Furnished

### + NUTS +

Large English  
Walnuts ..... lb. 48 - 59c  
Pecans ..... lb. 35c  
Baby  
Chestnuts ..... lb. 25c  
Brazil Nuts ..... lb. 43c  
Mixed Nuts ..... lb. 53c

### FOR THE CHRISTMAS TABLE OR GIFT BASKET

Oranges and Tangerines will be coming in fresh from now until Christmas, direct from the orchards and packing houses, which will offer you a savings on a box or bag or dozen.

Cranberry Sauce ... can 25c  
Baking  
Chocolate ..... 1/2-lb. 45c  
German Sweet  
Chocolate ..... 1/2-lb. 25c  
Hershey Baking  
Cocoa ..... 1/2-lb. 35c

### FLAVORS AND SPICES OF ALL KINDS

Granulated  
Sugar ..... 10 lbs. \$1.45  
MARSHMALLOW CREAM ..... 29c  
2-Lb. Box  
Sugar Stick ..... 58c  
Fruit Slices ..... lb. 19c  
Gum ..... 6 pks. 24c

Fresh Florida  
Tangerines and  
Oranges Daily

Sweet  
Potatoes \_ 2 lbs. 25c

Irish  
Potatoes \_ 6 lbs 36c

3 Lbs. Jewel  
Shortening ... 65c

No. 2 Can Argo  
Sugar Peas ... 2-33

Chocolate Coated  
Cherries ..... 48c

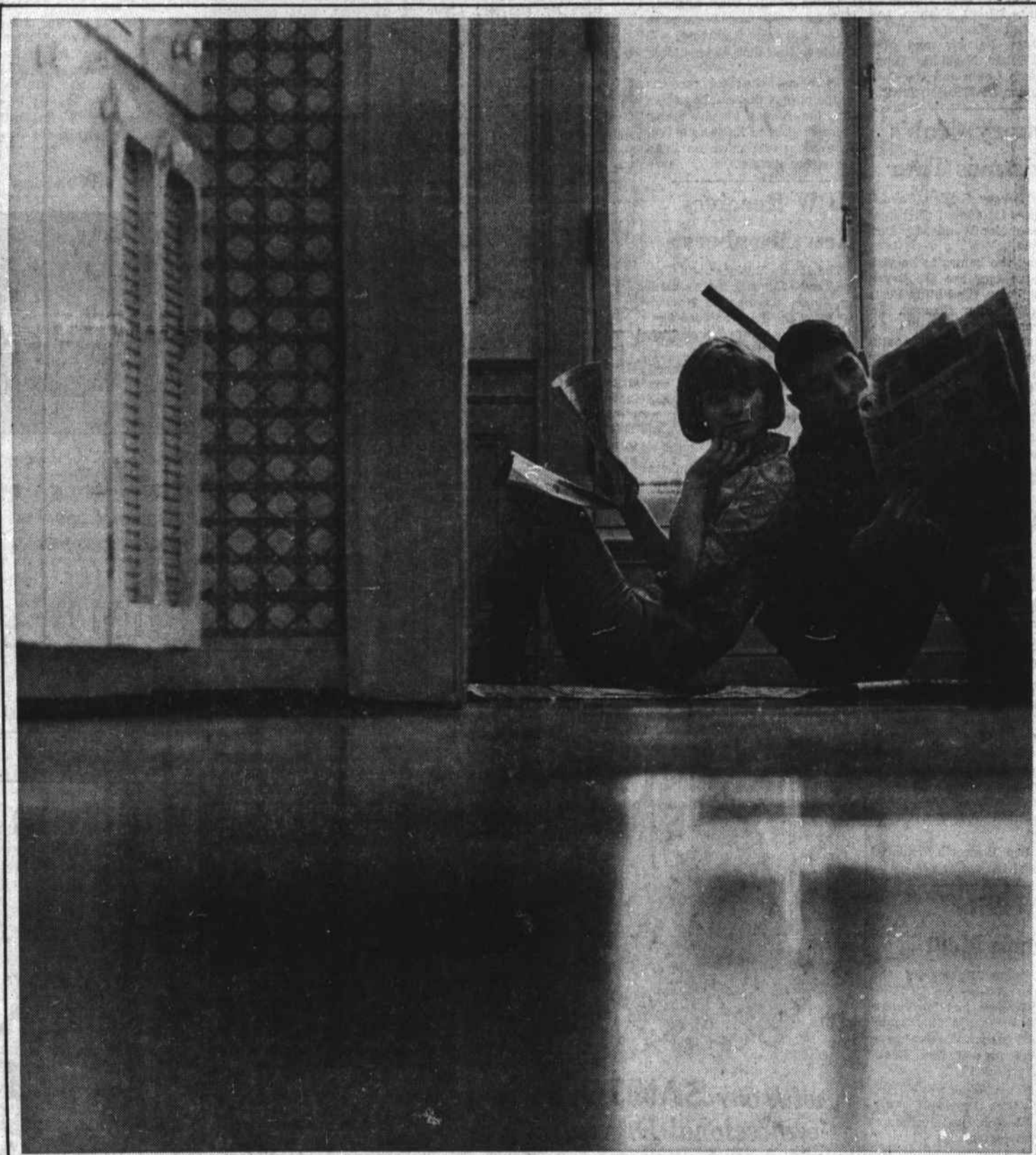
Broken Stick  
Candy ..... lb. 19c

Christmas Special  
Creamy Drops  
Chocolates ... 35c

100-Lb. Bag PINTO  
Beans ..... \$12.00

100 Lbs. OCTOBER  
Beans ..... \$17.00

FAMOUS WINEBARGER  
BUCKWHEAT FLOUR  
5 lbs. ... 85c  
10 lbs. ... \$1.65



## DON'T YOU READ BEFORE YOU BUY?

And don't you sometimes re-read, study, compare, figure, measure, clip, save, and show to friends? When you're on the brink of buying, aren't you hungry for

facts, features, dimensions, styles, colors, capacities, and prices? Print advertising puts people who are close to a purchase close to the kind of informa-

tion they demand. Magazines, newspapers and brochures let them linger with your message for as long as they like. Print imparts important details, allows for colorful presen-

tations, makes lasting impressions, takes people straight to the point—of purchase. Print makes sense because print makes sales.