

The Democrat led all N. C. weeklies in 1965 Press Assn. contests. It won first place in General Excellence, Excellence in Typography, Local News Coverage, Want Ads, and Second in Display Advertising.

WATAUGA DEMOCRAT

An Independent Weekly Newspaper . . . Seventy-Ninth Year of Continuous Publication

BOONE WEATHER			
1966	High	Low	Snow Prec.
Dec. 20	43	23	0
Dec. 21	50	30	0
Dec. 22	50	31	0
Dec. 23	42	28	0
Dec. 24	28	12	5
Dec. 25	23	10	1
Dec. 26	30	19	0

Snow given to nearest half-inch.

VOLUME LXXIX—NO. 26

BOONE, WATAUGA COUNTY, NORTH CAROLINA, THURSDAY, DECEMBER 29, 1966

10 CENTS PER COPY

16 PAGES—2 SECTIONS



WINTER CAME HOME, and with it, the wherewithal to operate snow-making machines to supplement the weekend precipitation. Some changes have been made since this picture was made last

year at Blowing Rock, but what never changes is the fact that the snow sport is gaining followers. Watauga County now boasts three ski lodges. (Staff photo)

Two Ski Slopes Draw Good Opening Crowds

As of Tuesday, a snow storm was sweeping the nation, and, according to Mrs. Fred Allen, "I hope we get it!"

Skiers crowded into the mountains Monday to patronize two of the area's three ski complexes and Mrs. Allen, of Blowing Rock Ski Lodge, reported more than 200 snow-

hounds were on the slopes Monday, the first day of operation. She said snow base was 30 inches on the intermediate slope, with five or six inches powder put down by snow-making machinery Monday night. The beginner slope also is open.

Next on the agenda at Blowing Rock is to put the advanced slope in operation.

Hound Ears Lodge & Club, according to Miss Dorothy Smith, is going strong, with

an 8-inch base and three to four inches powder made Monday night.

Out at Seven Devils Development, no skiing as of Tuesday. Manager Bill Shepherd said a breakdown of equipment delayed the projected opening, although Tuesday's forecast was Seven Devils might begin its first year of ski operations Wednesday, or the latter part of the week, depending upon repair of equipment.



J. HUGH RICH

Bank Official Gets Promotion

Jacksonville—J. Hugh Rich has been promoted to executive vice president of the First National Bank of Eastern North Carolina which has 21 offices in 14 Tar Heel cities.

The announcement was made here today by M. F. Allen, Jr., president of the system which started 14 years ago with only \$150,000 assets and which recently hit \$50 million assets.

Rich was promoted from senior vice president where his primary responsibilities were in loan and investment operations.

"With this promotion by the board of directors, Mr. Rich becomes active in all areas of First National operations throughout the system," Allen said.

The president also paid special tribute "to Mr. Rich not only for his loyalty and effort since joining the bank 14 years ago but also for the

(Continued on page three)

Jaycees Fete Needy Ones At Annual Party

Forty-six little boys and girls went home happy after the Jaycees and Jayettes of Boone entertained them Tuesday, Dec. 20.

The annual Christmas party, which is sponsored by funds from Jaycee Christmas tree and candy sales, is held for underprivileged children from county schools.

The youngsters were taken on a shopping tour, and \$15 was provided for each child's needs. After the tour, they were fetted with hamburgers and cokes at Tony's Pizza Parlor and given gift bags of candy and fruit before returning to school.

Boone Business Is Good, Despite Snow

How did it go in the snow and blow of downtown Boone. One merchant reported Christmas receipts "most satisfactory", and predicted 1966 will show a nice increase over '65, while another assessed the holiday trade "equally good as last year" and attributed the early recess of Appalachian State Teachers College as a factor that "hurt business a little bit."

Although the college traditionally lets out a week before Christmas, the Dec. 9

closing depleted the pre-Christmas bustle and noise, and provided permanent faculty residents an opportunity to do some broad holiday visiting out of town, one businessman noted.

But the mercantile picture for Christmas '66 is fine, generally, for despite the ice and snow that rushed in the end of the week, most of the people seemed to get where they were going, and found in Boone, as usual, goods and services worth getting.

Babson Says Our Greatest Danger Not On Home Front

BY ROGER W. BABSON

The close of 1966 marks the seventeenth consecutive month in the life span of the longest business boom of all time for the American economy. However, "trees do not grow to the sky." Already, signs of deterioration in the expansive vigor that characterized the earlier phase of the business upswing have been increasing in 1966. Hence, the outlook for business and finance in 1967 is of greater-than-usual importance.

Lest readers of this column be tempted to "push the panic button", however, let me state that it would be unwise to expect a major depression in 1967. Our greatly expanded economy still has a considerable degree of momentum. The spotlight on 1967, therefore, should focus upon those factors which are likely to cause a breathing spell in economic activity. Politicians and labor leaders have a phobia against even a hesitancy in business, and rush headlong into mea-

sures designed to treat a case of pneumonia when cold pills would be more appropriate.

1. Although business and financial problems loom large in the prospects for 1967, I must first warn readers that the greatest danger for the year ahead does not exist on the domestic front. Surely it will be developments abroad that will hold the gravest threat to our country. These could be economic as well as military or political.

2. I foresee no war between the United States and Russia in 1967. However, tensions between the two world leaders may seem to reach the breaking point as the Kremlin "goes all out" to create Vietnams to our efforts in Vietnam. Look for Moscow to throw salt on festering wounds in the Middle East, Africa, and Germany.

3. I am also hopeful that a direct clash between Red China and the U. S. can be avoided

in 1967. Internal dissensions are rampant throughout Mainland China, and a great scramble for power is in full swing. Sabre-rattling may help to unify the people; but pressing problems of low productivity, plus the demands of her nuclear program, should restrain Red China from direct attack upon the United States.

4. The struggle for leadership of the Communist world camp will continue unabated throughout 1967. Full political attack will be mounted by the Kremlin against Peking. It will be touch and go, however, whether Russia can persuade her wavering satellites to sign a final manifesto reading Red China out of the Party.

5. Recent elections in West Germany have fanned the embers of nationalism into a tiny flame. This has surely thrown a scare into Russian leaders. I predict that they will take a harder line against Germany in 1967 than in some time. I feel that we should particularly

watch General de Gaulle, who is playing closer and closer to Moscow from month to month.

6. Heavily armed with Soviet weapons, the Arabs of the Middle East—squared off against Israel—present a grave threat to world peace. Nevertheless, I do not believe that Russia or the United States can afford a direct confrontation at this time; hence my forecast that the smoldering conflagration there will not erupt into World War III.

7. While all reasonable people are hoping for a genuine peace in Vietnam, I predict that the issue will not be resolved in 1967. Though the tide of battle is swinging in our favor, we may be forced to increase our commitment in order to retain this upper hand.

8. I predict, therefore, that military spending will be raised in 1967. This can help offset the impact of any easing in

(Continued on page three)

Penalties Provided Watauga Tax Listing To Get Under Way Jan. 3

Supervisor Asks For Help Of Taxpayers

Tax Supervisor G. Claude Danner advises Taxpayers of Watauga County they are required to list their property and polls for taxation starting Jan. 3, as of ownership Jan. 1. List-takers by community and the schedule of listing dates are advertised in this issue of the Democrat and everyone is asked to list in his own township. The books will remain in the townships through Jan. 14, and be returned to the Courthouse by Monday, Jan. 16.

Failure to list within the prescribed period, Danner states, can result in a 10 per cent penalty, whereas a \$50 fine or 30 days imprisonment can be levied on persons who should, but do not, list.

All house trailers must be listed, and automobile, truck and trailer listings will be checked against State registrations. When listing vehicles, owners should bring make, model and serial numbers.

Farm Census

Each farm owner shall prepare a list of the acreage of each crop, including tenths of acres of truck. The list should show the total acres cultivated by the owner, also the acres cultivated by all tenants on each separately recognized farm, the acres in improved pasture, woodland, idle and other lands.

He shall be prepared to report the number of bearing fruit trees, the number of livestock of breeding age, number of hogs sold or slaughtered during the past 12 months and the number of chickens.

Danner says this information is confidential and its purpose is for agricultural education, economic analysis and safe guidance of county agents and farmers generally. It has no relation to taxes.

Danner asks the co-operation of taxpayers in completing the vital tax-listing program in the allotted time. He urges immediate action, with the hope no penalties will be exacted for failure to list.

United Fund Exceeds Quota By Over \$3,000

A notice from Carolinas United shows intake for Watauga County's United Fund campaign had reached the 120 percentile mark as of Dec. 20.

The local campaign budget of \$16,000 was exceeded by \$3,210 for a total income of \$19,210.

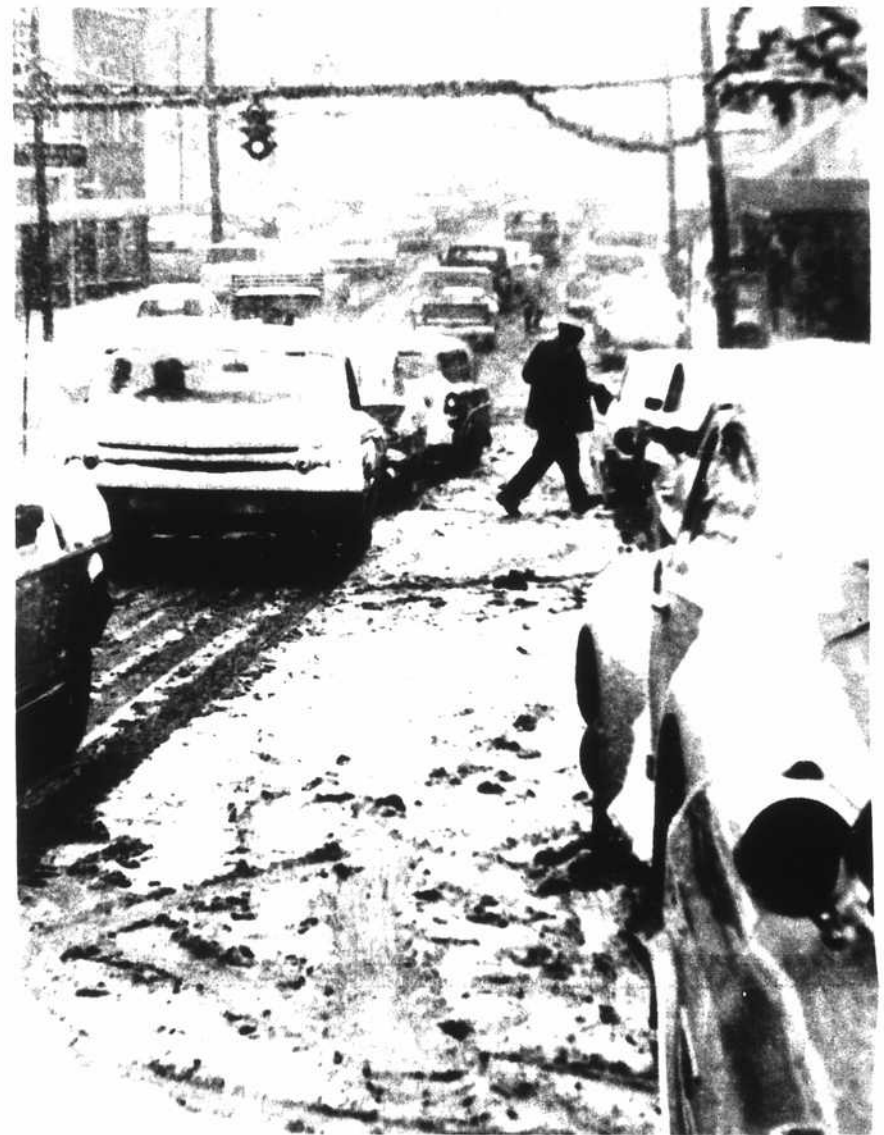
Commissioners To Meet Next Tuesday

The County Commissioners will meet Tuesday, Jan. 3, instead of Monday, Jan. 2.

Four-Vehicle Collision Throws Truck Into Creek

Rescue efforts continued Monday to lift a truck out of a stream bed to which it plunged from Highway 321 between Boone and Blowing Rock Friday afternoon.

Investigating Patrolman W. D. Teem reported that the four-vehicle collision, resulting in the 125-foot plunge of the tractor, occurred around 3 p. m. Friday when roads were becoming slippery under an icy snow.



'T WAS FRIDAY BEFORE CHRISTMAS, and all through the town—bumper to bumper traffic, swirling snow, but plenty of holiday cheer. (Staff photo)

Watauga Rescue Squad Reports A Busy Year

In 1966, the Watauga County Emergency Rescue Squad reports answering an average of one call a week, 72 calls in all for a total of 620 hours of service.

According to a report from the log books, this figure does not include hours spent weekly in First Aid classes, regular business meetings, nor time going to and from emergency areas.

A total of 3,210 miles have been logged within the year. This is equivalent to a motor trip from Boston to San Francisco.

Expenses for the budgeted year total \$2,677.40. The bulk of the calls have been traffic accidents. Other calls included team effort to comb regions for lost persons, answering the call of heart attack victims, stand-by calls such as ASTC and WHS football games, and the Optimist Club Halloween Party. The Squad has assisted at a plane crash, administered oxygen at

and assisted in fire calls and helped control and direct traffic in time of need.

The report says that residents of Watauga and business firms have played a big part in the success and stability of the Rescue Squad. "They have

contributed generously in giving through personal gifts and through donations arising from the rotary tiller and shot gun the Squad gave away.

"Without the support of the County, the Rescue Squad would not exist."

Aluminum Cable To Be Tested By Bell Co.

The Bell System now has its ear to the ground about the wires in the air.

Local Southern Bell Manager B. B. Leazer said that Bell scientists are working to test a new type of cable—aluminum. Aluminum has proven to be an adequate substitute for the traditional copper wire in Bell Lab indoor tests. The real question will soon be solved after the new wire has a chance to weather some real weather.

The reason for the develop-

ment is not to replace the copper wires with the aluminum costs, but to have a substitute ready in case of problems developing with the constant uncertainty in supply and price of copper. After

(Continued on page three)

Many Places To Be Closed For New Year's

The Town of Boone may not close down as fully as it did Monday after Christmas, but the Chamber of Commerce lists City Hall, the Post Office and the Courthouse among those planning to lock the doors Monday after New Year's Day.

Others to close will be the Building & Loan, the banks, and several merchandise and clothing establishments. Prior to Christmas, two of four food stores reported they would close this Monday and many others expressed willingness to do as others in their category.