

# Byrum Hardware Co. One of Leaders

## OUTGROWTH OF FIRM ESTABLISHED OVER QUARTER CENTURY AGO; RAPID PROGRESS

**Founded by G. W. Goodwin and T. C. Byrum; Patronage From Wide Area of Section**

The Byrum Hardware Company was organized and began operations almost a quarter century ago. Established in 1914 by G. W. Goodwin and T. C. Byrum, it began business under the name of Goodwin & Byrum Hardware Company. One year later reorganization of the company was made and the name changed to the Byrum Brothers Hardware Company, but in 1917, when our country entered the World War, operations were suspended on account of T. C. Byrum enlisting in the army.

At the close of the war, in 1919, Mr. Byrum returned to Edenton and re-opened the business under the same name, Byrum Brothers Hardware Company, with T. C. Byrum and G. P. Byrum owners. The business continued to operate as a partnership until 1937 when T. C. Byrum became sole owner and operator of the company.

Probably no business in the retail field has developed and expanded its facilities more than this company has during the past decade. Today, in addition to carrying a large and full line of all kinds of hardware, household, building and heavy hardware, it also stocks a full line of sporting goods, fishing equipment and fishermen's supplies, and is exclusive dealer for the famous line of Westinghouse Electric Refrigerators and other lines of nationally known reputa-

tion. When the company was organized and began business it gave employment to two people. Expansion and development throughout the years have increased this number until today more than 20 people are employed with additional help during the busy season.

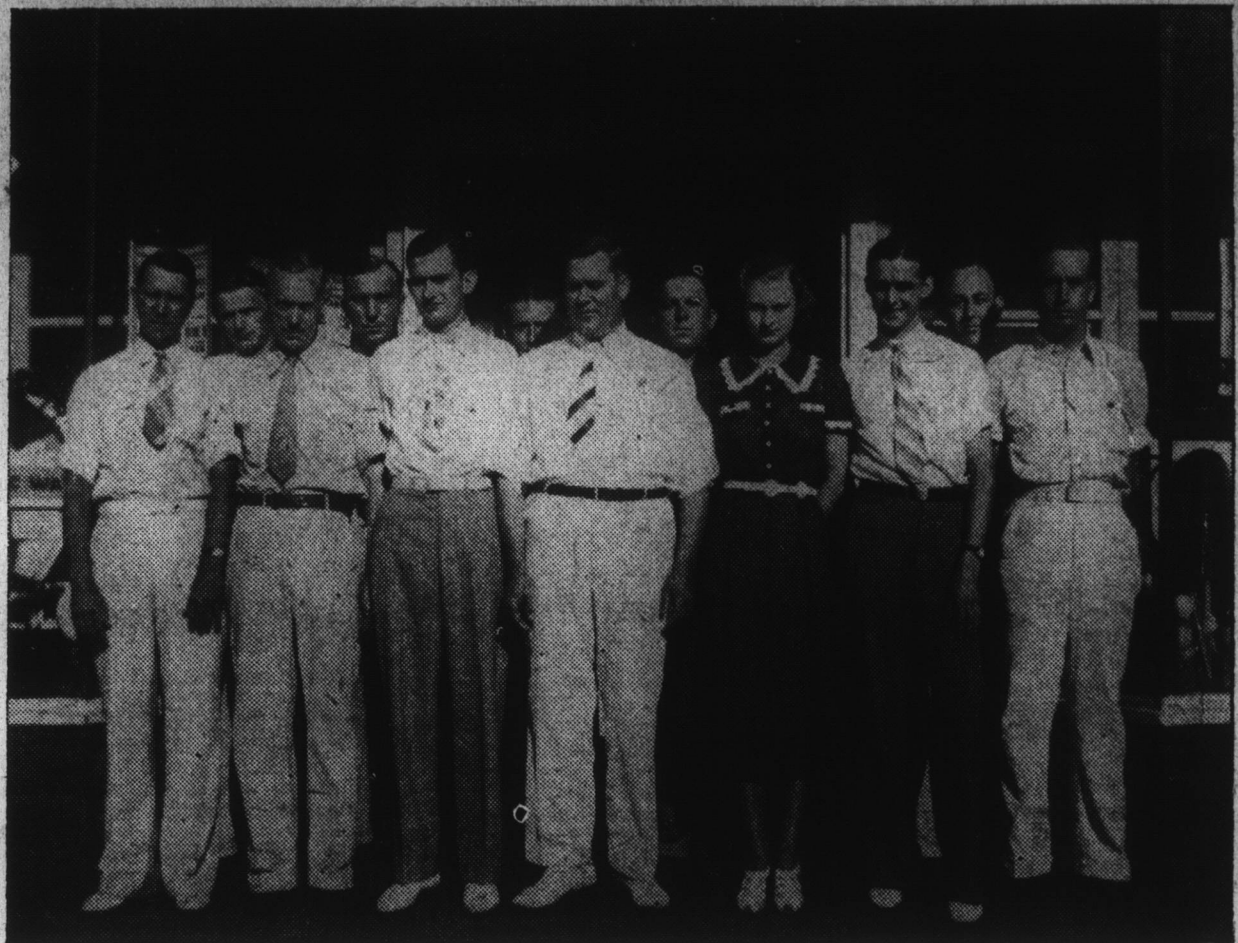
In addition to a general hardware store the firm operates a separate unit occupying a modern building at the rear of Hotel Joseph Hewes as a distributing and display location for the International line of farm machinery and tractors. In this location is also maintained a modern truck and motor car repair department, as well as doing repairs and overhauling all kinds of farm machinery and tractors. This department is under the supervision of Caleb Goodwin, who is assisted by D. M. Carter and D. L. Warren.

The company enjoys a splendid patronage from seven of the Albemarle counties and with the opening of the bridge across the Sound will give it trading access to another rich and fertile territory.

Modern in every respect, large stocks attractively displayed, and with a highly trained personnel, one is assured of the finest of service, plus highest quality merchandise. The store is a credit to Edenton and the Albemarle section of the State, and is probably the largest in this section of North Carolina.

Headed by T. C. Byrum, owner, are the following employees: in the office is J. M. Elliott, assisted by Miss Lena Smith and Jesse L. Harrell, and on the sales force are C. T. Hollowell, C. P. Nixon and T. E. Haste; outside

### EMPLOYEES AND OFFICIAL FAMILY OF BYRUM HARDWARE CO



Reading left to right. J. H. Bunch, C. T. Hollowell, J. L. Harrell, T. C. Byrum, Miss Lena Smith, C. R. Nixon, G. F. Perry. Back row, T. E. Haste, P. E. Saunders, Q. T. Bass, W. C. Sitterson and John M. Elliott.

salesmen, J. H. Bunch, G. F. Perry. house (N. B. C. Boat Line) Quinton Bass. Metal roofing department, Noah Bateman, S. Smith and W. Gay. Deliveries are made by W. C. Sitterson, T. K. Robbins and Richard White.

## Habit's Cafe Popular Edenton Eating Place

**Operated By Joe Habit, Citizen and Merchant In Edenton Ever Since 1914**

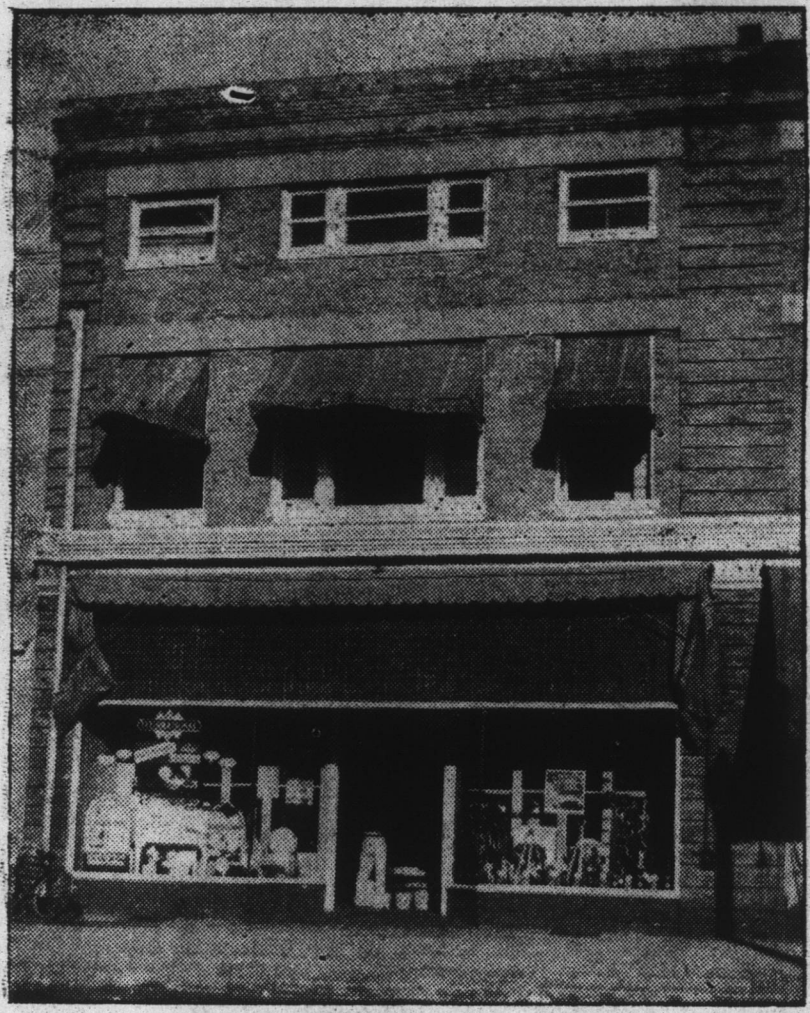
Probably one of the best known merchants in the city is Joe Habit, who came to the City of Edenton in 1914, opening and operating a dry goods store in the Dixon Building, and in 1916 moving to larger quarters on the corner of Queen and Broad Streets and continuing until 1923.

Upon disposing of his dry goods business, Mr. Habit entered the restaurant business, opening a lunch room mid-way in the second block of Broad Street, which he has operated for the past fifteen years, and which is today one of Edenton's popular eating places.

Early in the coming of the trucking business Mr. Habit became interested and established a trucking service from Edenton to Norfolk. This was in 1924, and two years later it was extended to Washington, N. C. Again in 1928 the line was extended and daily trucking service given to New Bern and points further south and west, as well as to Morehead City and that section south of the Pamlico Sound.

From 1927 to 1930 Mr. Habit was dealer and distributor for the Whippet motor cars and a dealer in used cars.

Associated with Mr. Habit in the trucking business is his brother, John Habit, who devotes his full time to the management and operation of the line, which is also distributor for several brands of beer in the Albemarle territory.



Our Modern Home In Edenton

#### A FEW OF OUR NATIONAL LINES

- Westinghouse—Full Line
- Yale, Stanley, Belknap Hardware
- Johnson Sea Horse Motors
- Tanglefin Gill Netting
- Wall Fisherman's Rope
- Ball Band Rubber Boots
- Florence Oil Ranges and Heaters

**WE DO ROOF WORK**

## Serving The Albemarle

For twenty-one years we have enjoyed serving the Albemarle and adjoining sections. It has always been our desire to offer to our patrons the very HIGHEST QUALITY MERCHANDISE at REASONABLE and COMPETITIVE PRICES. We have also strived to have WHAT our customers wanted WHEN they wanted it. At the same time we have given the same CHEERFUL and COURTEOUS SERVICE to the SMALL BUYER that we have given to the LARGE BUYER with the realization that our existence depends on CUSTOMERS—both LARGE and SMALL. Our gratitude goes out to our friends of the ALBEMARLE for their splendid response to our efforts to give them OUR BEST and for their LOYAL PATRONAGE. These factors have encouraged us to put forth our ALL and have made us what we are.

### Your Patronage Is Invited

Now that the barrier of separation has been removed by the completion of the Albemarle Sound bridge, we urgently invite you to make full use of this connecting link by both visiting and shopping in Edenton—the trading center of the Albemarle. While in Edenton we want you to know that a very cordial welcome awaits you at Byrum Hardware Company, and it will greatly please us to have you make our store your headquarters. Each person connected with our organization is anxious to do his best to serve you from our complete stock of Hardware, Paints, Farm Machinery, Trucks, Electrical Goods, Fishing Equipment, Metal and Roof Work.

COME TO SEE US — WRITE — OR PHONE

#### McCormick - Deering FARM MACHINERY

- Farmall Tractors
- Tractor Equipment
- Horse and Tractor Mowers
- Horse and Power Balers
- Horse and Tractor Harrows
- International Power Units
- International Hammer Mills
- Roanoke Peanut Pickers
- Picker and Baler Parts

**International Motor Trucks**

#### Tractor and Truck Repairs and Service

We Specialize In PARTS AND REPAIR WORK for FARMALL TRACTORS INTERNATIONAL TRUCKS

We Also Service ALL OTHER MAKES TRACTORS - TRUCKS - AUTOS

Located Behind Hotel Joseph Hewes

# Byrum Hardware Company

Hardware, Paints, Farm Machinery, Sporting Goods, Electrical Goods, Refrigerators, Fishing Equipment