

WATCH EDENTON GROW!
Mother Town of
North Carolina
Capital of the Albemarle

THE CHOWAN HERALD

A HOME NEWSPAPER DEVOTED TO THE INTERESTS OF CHOWAN COUNTY

Progress
— and —
Prosperity
Edition

Volume V.

Edenton, North Carolina

Single Copies—10c

Edenton Offers Many Opportunities

All Modern Conveniences Offered To Both Industries And Prospective Residents

Splendid Location; Tax Rate Low; Congenial Citizenship

HISTORIC TOWN

Trade Center For Thirteen Rich Eastern Counties

Strongly proclaiming itself proportionately the equal, if not the peer, financially and commercially, of any trade center of the Albemarle, and with its healthful climate, a happy, progressive and prosperous populace, Edenton has, as a municipal government, been doing business under one name or another for nearly three centuries.

From the outset, Edenton was planned as the metropolis of the Albemarle, and today it remains solid on that path, and while it was the actual trade center for many years, its actual growth and development, industrially and commercially, dates back not much more than a generation.

It would be futile to attempt to enumerate the opportunities and advantages outside capital, backed by men of experience and determination, would have here in Edenton and Chowan County. Several lines of industry stand out most prominent, namely, the manufacture of lumber and wood products, textiles, manufacture of food products, processing plants for soy beans, cotton seed and other agricultural products, veneer plants, as well as practically every other line of manufacture. Here labor is plentiful, intelligent, native-born and free from outside influence,

where living conditions are as good, and in most instances far above the average.

Today Edenton is a modern medium size town, with all improvements of a modern city, with conveniences and services, with modern business houses of various kinds, industrial plants whose payrolls run into thousands of dollars annually, a strong financial institution, amusements, school facilities, religious organizations—a business town as good as any.

Today practically all the basic raw materials of this rich section are being put through manufacturing processes by a locally-owned and operat-

ed cotton mill, lumber and peanut factories. The total values of these products, approximately, amount to \$5,000,000.00 annually, a showing not equalled by any town in the State within a radius of over 75 miles.

Edenton owns and operates a complete system of public utilities on which it earns over \$21,000 annually, an amount sufficient to retire its entire bonded debt of only \$49,000 within less than two and one-half years.

Edenton is living well within its income from its low taxes and low valuation, the tax rate being only \$1.00 per \$100 valuation, and the town expects to be bonded and debt free by 1945. With the cost of government around \$30,000 a year, and the utilities taking care of over two-thirds of this, one can see that taxation is not a future worry, nor do Edenton citizens and its industrial plants expect taxes to become burdensome.

With the opening of the bridge across Albemarle Sound it will bring within economical reach by both rail and highway a rich section from which trade and commerce will begin. (Continued on Page Two)

CIVIC LEADER



J. H. McMULLAN

Mayor of Edenton and Secretary of the Edenton-Chowan Chamber of Commerce.

One Of Most Progressive And Fastest Growing Cities In Albemarle Area Of State

DO YOU KNOW ...

- that Edenton is seventeen feet above sea level and is the highest point between Norfolk, Va., and the trade center of 13 rich counties of northeastern North Carolina?
- that Edenton and county environs have a total population of more than 12,000 people, with but a small percentage on relief or Federal public works payrolls?
- that in Edenton there are fifteen manufacturing industries with an output of finished or process commodities and merchandise with a value of more than \$5,000,000 annually?
- that Edenton's water commerce conservatively estimated will total approximately \$7,000,000 annually, and it's still growing?
- that shad and herring fishing landed at Edenton amounts to about 800,000 pounds per year?
- that Edenton has every transportation facility, except via air, which includes rail, water and bus—north, east, south and west?
- that Edenton owns its electric light and electric industrial power system, water works system, and that practically all of its principal streets, especially residential, and all business section streets are paved and practically paid for, owing only \$49,000, and has never defaulted on a payment of its bonds or interest on same?
- that Edenton is the largest peanut market in North Carolina and the second largest in the world?
- that thousands of tourists visit the historical spots and visit Edenton each year?

Ideally Located in Center of Rich Agricultural Section

BIG OUTPUT

Variety of Products Responsible for Steady Growth

By J. H. McMULLAN

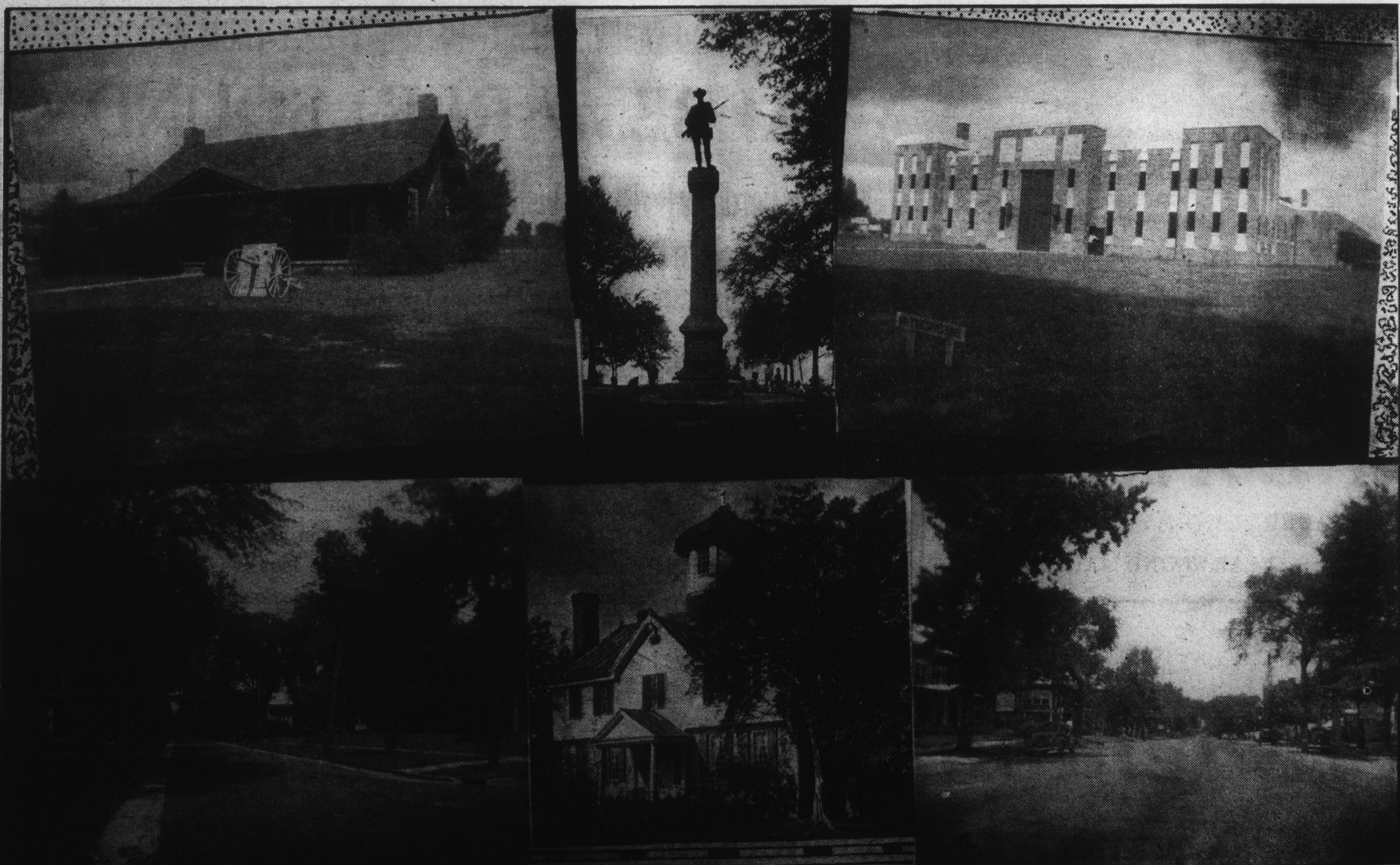
The location of Edenton on the Albemarle Sound at the confluence of the Chowan, Roanoke and Cashie rivers was in no wise an accident. For those colorful and resourceful Colonial pioneers who came to America to found a new world had good reason to believe this the ideal spot for the location of the Capital and trade center of the Empire which they were founding. In the year of 1658 when that location which since 1772 has been known as the city of Edenton was selected, water transportation was the only avenue of commerce available to the people of that day. The hazards of nature and the risk of savage depredations were sufficient to insure the location of all settlements at accessible points on the inland waters of the Province. So, thanks to water transportation, Edenton naturally became the Capital, a commercial and social center of the Province of Carolina.

Not until the savage had been conquered and the back country made safe for habitation and husbandry, did the course of the Empire penetrate the interior.

As this movement progressed and the Colony expanded, other cities arose to challenge the commercial (Continued on Page Two)



The above picture was made one block from the Municipal dock, looking north and showing the principal retail section of Edenton. On the extreme left is the Bank of Edenton building.



No. 1—The Edenton Boy Scout hut. Center—Confederate Monument, located in front of the Chowan County Court House on the Court House Green. No. 2—New Armory building which houses Company F. No. 3—Residential scene. Lower center—the historic Cupola House, built in 1768 by Francis Corbin, and reputed to be the oldest. No. 4—Broad Street looking north from the business section.