

## Heavy Traffic Taxes Ferry To Hatteras

### Conditions Differ From Boulevard Driving and City Living

A second small ferry added as an emergency measure at Oregon Inlet has helped somewhat to relieve congestion, but both craft are unable to cope with the heavy traffic attracted to Hatteras by news that a road has been built to the Outer Banks outpost.

On week-ends and other special occasions, motorists may find themselves faced with very long waits on either side of the inlet, which separates Hatteras Island from Bodie Island, on which Nags Head is located to the north. The regular ferry, with capacity for only 12 cars, operates on an hourly schedule from 7 A. M., until 6 P. M.

The road has been paved practically to Hatteras Village, about 60 miles from Manteo, but this kind of road-building requires months for stabilization and its proximity to the surf makes it vulnerable to sea action at all times. Constant maintenance is required, and the motorist should be prepared to make sand detours at any time. Sand driving is difficult for a novice and may result in serious damage to an automobile.

It is always best to obtain current information on the road and congestion at the Oregon Inlet Ferry at Nags Head or Manteo before setting out for Hatteras, which is showing signs of a boom following announcement that the only National Seashore Park is to be established around the famous cape.

Relieving the traffic congestion somewhat is the fact that the Hatteras-Manteo bus line is putting on new 35-passenger buses and doubling its schedule, effective July 28, to make two round trips daily. The new schedules provide direct connections to the bus at Manteo going to Elizabeth City and Norfolk to connect with rail and airlines.

The bus leaves Manteo at 8 and 2 P. M., and departs from Hatteras at about the same times. The running time is 2 hours and 15 minutes, and the fare \$2.75 each way, plus tax. Being a regularly franchised carrier, the bus has priority on the Oregon Inlet ferry and is entitled to cross while private vehicles wait. This schedule is subject to change.

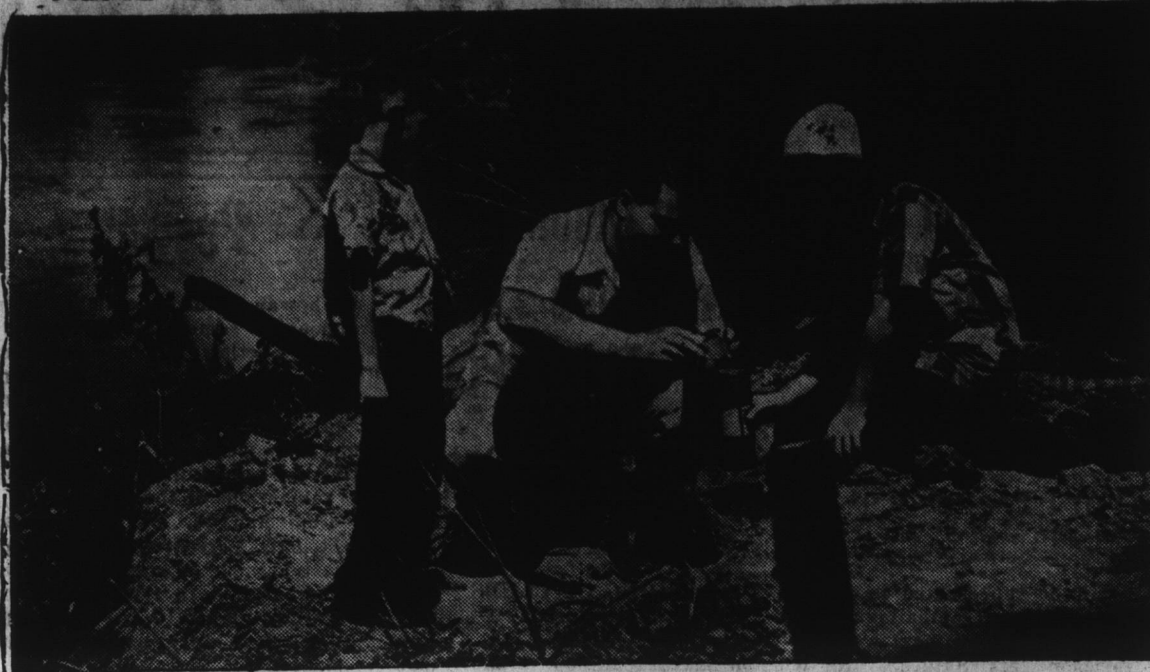
Visitors who ride the bus are able to charter jeeps or cars with experienced sand drivers from the bus company in Hatteras for travel to the lighthouse, trips along the beach to the old wrecks, or for surf casting.

Most maps still show a private ferry to Hatteras from Englehard, on U. S. 264 across Pamlico Sound. This ferry was discontinued in the spring of 1952 after being operated for many years.

The only ways to reach Hatteras are by boat—Hatteras Village has limited pier space; by air—landings are made on the beach and planes may be chartered at Manteo; by highway from Manteo and Nags Head—requiring crossing Oregon Inlet by ferry; or by private ferry from Ocracoke Island to the south.

This is most interesting country, and most visitors are considerably more than compensated for the difficulties of travel in this "raw" area, but it must be remembered that conditions quite different from city liv-

## REAL "INJUN" STUFF—DEEP IN THE SWAMP, TOO



AND ALSO CONTRIBUTING TO MAN'S FIGHT AGAINST DISEASE—These youngsters, Al Atridge, Jr. (right), and Henry Hilton, Jr. (left), get the "kick" of a lifetime by helping Jack Hanahan, a curator of the Charleston Museum, take a soil sample at the site of Indian mound excavations now under way deep in the Wateree swamp near Camden, S.C. Thousands of soil samples—one from Missouri not long ago gave the world aureomycin, the wonder drug that has saved countless lives and a by-product of which is used as a feed supplement for livestock and poultry—are processed by laboratory researchers in their hunt for other effective antibiotics. Antibiotics are made from molds produced by micro-organisms in the soil.

ing and boulevard driving will be encountered and precautions should be taken accordingly.

### Our Neighbors

By MISS REBECCA COLWELL  
Chowan County Home Agent

The annual county picnic held last Wednesday afternoon was lots of fun for all ages. The Rev. and Mrs. Gordon's baby was the youngest one there, but, of course, we didn't find out who was the oldest. The picnic was sponsored by the 4-H and Home Demonstration Clubs with Gum Pond Club serving as an efficient hostess. A very good recreational program was conducted by Miss Carolyn Biggerstaff, assistant home agent. The younger and older people thoroughly enjoyed the games although it was one of those hot afternoons. To complete the program Robert S. Marsh, Assistant County Agent, showed an educational movie "Life and Lane" making it an evening of fun, information, and good food. As usual, the women prepared and served a delicious picnic supper of fried chicken, Chowan County ham, salads, cake of many varieties, and so many other good foods. Better join one of these clubs—they work for better farm family living, and better communities, but they also believe "all work and no play makes Jack a dull boy."

August is recreation month for the

Home Demonstration Clubs. Don't you think the following meetings for club members and their families sound interesting? For Chowan Club a chicken fry at the Community Building on August 11 at 6:00; the Rocky Hock and Beech Fork Club folks will have their picnic dinner in City Park (Norfolk) at 12:00 o'clock on August 12, and Ryland Club will have its picnic supper on the lawn at Mr. and Mrs. T. L. Ward's home on August 12 at 6:00 o'clock. Ward Club will have a picnic supper on August 13 at 6:00 at L. C. Briggs' Store (That's a nice place for a ball game and other recreation, too). The Enterprise club picnic supper will be at the Block (Valhalla) on August 14 at 6:00; and the last but not least for next week is Advance chicken fry at the J. C. Skinner home on Friday, August 15th.

Two suggestions for you who are looking ahead and freezing foods for later use.

When you add ascorbic acid to peaches and apples to keep them from turning dark you put more food value into them. Some varieties of peaches darken more readily than others. Ascorbic (pronounced a skor bik) acid is actually vitamin C. As you know, that is a food element that we need every day. Our bodies do not store it, so we must have a new supply daily. We get it from oranges, cantaloupe, green peppers, strawberries, tomatoes, and some other fresh fruits and vegetables. It is called the "fugitive" vitamin because it escapes from our food so easily. Buy your ascorbic

acid in powdered form (vitamin C tablets are all right—but expensive). Use one teaspoon of pure ascorbic acid to 1 quart of syrup for peaches. You can buy mixtures which contain ascorbic acid.

As to leaking containers for frozen foods—some sweetened fruit juices never do freeze. They will seep out into the locker or home freezer if given even a tiny opening. Be sure that all containers are closed tightly. Press lids down firmly all around the top on rigid containers. If heat sealing is used on bags, be sure it works. Too much heat will destroy the seal; too little will not seal. An iron set on "rayon" is satisfactory. Gooseneck twists on polyethylene bags

NOW IS THE TIME TO SEE

Harrell & Leary

FOR

GLIDDEN PAINTS

A COMPLETE STOCK  
Phone 459

are all right if they are made properly. Test bags before using by filling with water. Mend any leaking place by heat sealing that spot before filling.

What's happening in your community or club? Send news to the home agent by Thursday of each week. Let's go to Farm and Home Week August 18-22.

### Fruits Top August "Plentiful" List

Fruits—fresh, frozen and canned—will be plentiful in the Southeast in August, Miss Rebecca Colwell, county home demonstration agent for State College Extension Service says.

She explained that peaches, pears, lemons, limes, frozen concentrated orange juice, and frozen and canned lemon products all are on the U. S. Department of Agriculture's plentiful foods list for the month.

Other items on the plentiful foods list include fish, turkeys, nonfat dry milk, cheddar cheese, cottage cheese, and such fresh vegetables as sweet corn, tomatoes, and snap beans.

Many of the pears on the August

markets will be west coast Bartlett's. Normally about two-thirds of the crop is canned. However, June 1 carryover stocks this year were nearly three times as large as a year ago. These large carryover supplies may mean less demand from canners for the current crop and consequently more pears for fresh market outlets.

### NU QURL BEAUTY SHOP

For Style and Beauty  
Broad Street Edenton  
PHONE 605

## BEAM'S 86 Kentucky Whiskey

A BLEND  
86  
PROOF

'67.5%  
grain  
neutral  
spirits

Clear Spring  
Bottling Co.  
Gorman, Kentucky

\$350 \$220  
FIFTH PINT

### FLOWERS

Choice of Freshly Cut Bouquets  
Carefully Ensembled Corsages or  
Deco-Right Potted Plants.

PHONE 342

Lula White's  
Flower Shop

203 WEST CHURCH STREET

### CONVENIENT SHOPPING

## EDWARDS OPEN AIR MARKET

OPEN THE YEAR AROUND  
Fresh Fruits and Vegetables  
Fresh Eggs—All Kinds of Cold Drinks  
All Kinds of Seasonable Farm Produce  
OPEN SEVEN DAYS IN WEEK FROM 7 A. M. TO 10 P. M.  
SUNDAY HOURS: 7 TO 11 A. M. AND 12:30 TO 7 P. M.

JOIN OUR MANY CUSTOMERS!

## EDWARDS OPEN AIR MARKET

East Church Street Extended—Near Edenton Peanut Company

**\$2.05**  
PINT  
(4/5 QT. \$2.25)

**KENTUCKY WHISKEY  
A BLEND**

46 PROOF - 75% GRAIN NEUTRAL SPIRITS  
SCHENLEY DISTILLERS, INCORPORATED - LOUISVILLE, KENTUCKY

## Safeguard Your Travel Money

The cost of Travelers Cheques—75 cents per \$100—is a small price to pay for insurance against loss.

Travelers Cheques are convenient, too. You can cash them readily anywhere. They are good only with your signature, and if lost you will get a prompt refund. We issue them in a convenient wallet for pocket or purse.

BUY UNITED STATES SAVINGS BONDS

## THE BANK OF EDENTON

EDENTON, NORTH CAROLINA

Safety for Savings Since 1894

MEMBER FEDERAL RESERVE SYSTEM  
MEMBER FEDERAL DEPOSIT INSURANCE CORPORATION

### DEPENDABILITY



PERISHABLE food stuffs travelling thousands of miles! Unheard of a generation ago! Commonplace today... and all thru the undoubted dependability of the modern refrigerator car!

Whatever the distance or time of day or night, you can depend on us to conduct a ceremony imbued with taste and responsibility. Appointments of discriminating taste.



**WILLIFORD**  
Funeral Home  
PHONE 231 - EDENTON, N. C.  
THE HOME OF THE ALBEMARLE  
MUTUAL BURIAL ASSOCIATION