

United States Cotton Far Ahead In Quality

American Fiber Establishes New Record In 1952

The quality of American cotton is the highest of any cotton grown anywhere, and the 1952 cotton crop has set a new record for high quality.

The National Cotton Council reports that since 1940 the fiber length of the American crop as a whole has increased 6 per cent. In some areas the increase has been even greater as a result of new and better adaptation of specific varieties.

Fiber strength has increased 6.7 per cent since 1940 for the crop as a whole, more for crops in certain areas. Current research indicates new hybrids under development may bring further substantial increases in fiber strength.

Yarn Strength Up

Yarn strength has shown an average increase along with the improvement in length and strength and uniformity of the fiber.

The uniformity of American cotton has been increased greatly by reducing the number of varieties and planting more pure seed. Twenty-five years ago more than 500 varieties were planted. Today 10 varieties account for 89 per cent of the crop with nearly three-fourths of the crop planted to four of these varieties. More than half of the current crop now is produced from breeder, foundation, or certified seed. The use of such seed has increased about 20 times in the past decade.

Better Ginning

The American ginner does an increasingly better job of ginning to preserve the spinning value of the superior cotton he receives today. Ginners have added new and improved machinery and are employing the most modern ginning techniques.

The value and quality of the U. S. cotton crop are not accidental, the Cotton Council points out. They result from the application of science, technology, and engineering to all phases of cotton growing and processing in all areas where the crop is produced in this country.

COUNTY DEBT REDUCED

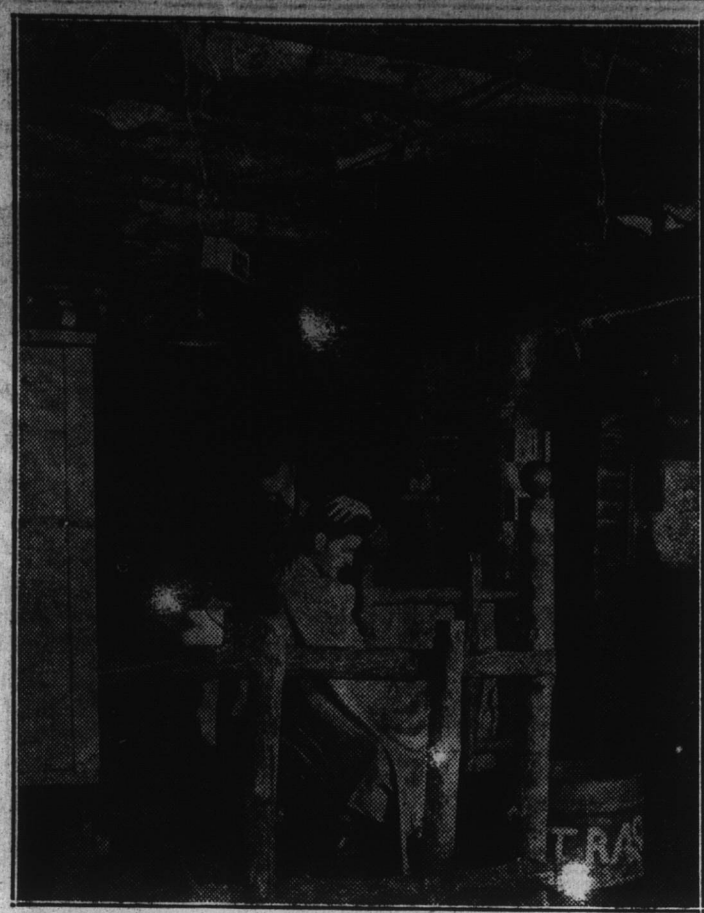
W. W. Byrum, chairman of the Chowan County Commissioners, on Monday morning was authorized to pay \$28,167.33 on the county's indebtedness. The amount represents \$7,796.47 for school building bonds and coupons due March 15 and \$20,370.86 for bridge and road bonds and coupons due April 1.

Times Have Changed

"When I was a young fellow," grandpa related, "my ambition was to have a gig and a gal."

"Well," said his son, "when I was a young man, I wanted a flivver and a flapper."

"Hey, pop," said the grandson, "how about me having a plane and a jane?"



IN A DAY ROOM DUNKER near the front lines in Korea a soldier, turned barber, gives a state-side haircut to one of his buddies.



GARDEN TIME
ROBERT SCHMIDT
N. C. STATE COLLEGE

Time is running out for planting strawberries in the eastern part of the state—the best months are December through March. For the western part of the state the months of March and April are best.

When hot weather arrives it is difficult to get a good stand and it is difficult to find enough good plants. Plants set at this time of the year will produce a lot of new runner plants which will produce a crop of berries next spring. Plants should be set about two feet apart in rows 3 1/2 feet apart or may be set even closer in small gardens. In setting the plants, spread the roots and be careful to plant deep enough so the roots are covered with soil but not so deep that the main bud of the plant is covered.

The Massey and Albritton varieties are recommended for general planting in North Carolina. Everbearing strawberries are recommended only for the mountain area. With everberries, if you desire a good crop during the summer and early fall months, it is a good practice to pinch off most of the early spring blooms. Otherwise they will bear a fairly good early crop and a very light late crop.

If you have an established strawberry bed, mulch it now with pine straw or other short straw. Work the straw in between the plants with a stick and cover the whole area between the rows. The straw put down at this

time of the year is not used as a protection against frost and cold weather, but as a means of keeping sand from splashing on the berries during rains and also of keeping the berries off the ground so that there is less danger of disease infection.

Do not fertilize an established strawberry bed any more until after the spring fruiting season. It will cause heavy vegetative plant growth and too much shading of the berries.

WHITE'S LANDING FISHERY
Rocky Hock
OPEN FOR BUSINESS
Monday, Wednesday
And Friday
Harrell & Nixon

Credit Has Advantages And Also Disadvantages

Credit is the privilege of getting something in the present with the promise of paying for it in the future, says Mamie Whisnant, State College extension home management specialist.

Credit is usually extended in three ways; the charge account, installment buying, and the borrowing of money.

Credit will be extended to any person who has the reputation of paying his debts, and whose earnings are sufficient to enable him to meet his financial obligations. Wise use of credit may mean the difference between success and failure, cautions Miss Whisnant.

A charge account is established at various stores where the family buys merchandise. It's easy to overuse an account because needs are always many, and no automatic check to the size of a charge account has yet been devised. It is much simpler to say "charge it, please" than to make out a personal check for the amount or to pay cash from your pocketbook at the time of purchase.

For people who must economize, says Miss Whisnant, a charge account may be unwise. It has its advantages and disadvantages.

1. It is easier to return unsatisfactory goods, since no change of money takes place. This privilege is much abused.
2. Establishes credit, which is helpful in applying for credit elsewhere.
3. Allows for payment of bills at once and entitles customer of advance notice of new goods, sales, etc.
4. Monthly statement from the store gives itemized list of purchases.

Vic Vet says

VETERANS! YOU DO HAVE A 31-DAY GRACE PERIOD IN WHICH TO PAY PREMIUMS ON YOUR GI LIFE INSURANCE. BUT PROTECT YOUR COVERAGE AND YOUR BENEFICIARIES BY USING IT ONLY IN A FINANCIAL EMERGENCY



For full information contact your nearest VETERANS ADMINISTRATION office

This helps in keeping records which can be filed for future use.

5. The store is usually more prompt in repairing or "making right" a purchase made on a charge account than when cash is paid.

Disadvantages:

1. The ability to charge goods may encourage over-spending.
2. Goods usually cost more at stores where charge accounts are allowed or encouraged because of the bookkeeping involved. No collectable charge accounts increase the cost of this service to customers who pay their bills.

Mere parsimony is not economy. —Edmund Burke.

Mary Ann Elliott In Science Honor Club At Mars Hill College

Miss Mary Ann Elliott, daughter of Mr. and Mrs. John M. Elliott, Edenton, has recently been received as a new member of the Science Honor Club at Mars Hill College.

To be eligible for membership in an honor club, a student must make at least a B on the course represented by the club, a passing grade on all other subjects, and a minimum of 30 quality credits.

Couldn't Fool Him

He was pickled and the policeman found him at 2 A. M. clinging to a lamp post and shouting, "Lemme in!" "There's nobody lives there," said the cou. "Don't lie," retorted the stew, pointing aloft. "There's a light upstairs."

DEPENDABILITY



ALERT, clear-eyed, muscles rippling under a clear, glowing skin, the trained athlete can be depended on to give the best that is in him. When a man is physically RIGHT . . . he acts that way!

Our reputation for dependability is your assurance that our organization will give the best and most faithful service. Correct appointments . . . whatever the ceremony you choose.



WILLIFORD
Funeral Home
PHONE 231-EDENTON N. C.
THE HOME OF THE ALBEMARLE MUTUAL BURIAL ASSOCIATION

Announcing THE OPENING OF Rosedale Dairy

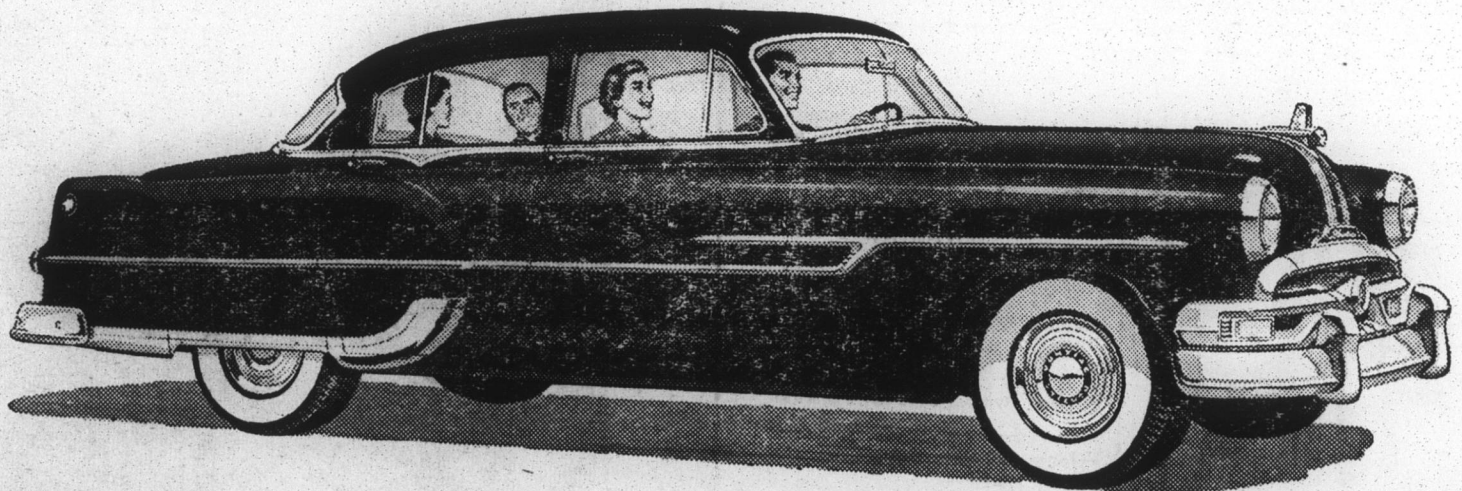
Effective Monday, March 9, we will have a complete line of Select Dairy Products in glass bottles or paper cartons. This top quality milk will be distributed by STANCIL DAVENPORT.

All retail deliveries will be made before 6 A. M.
FOR REGULAR DELIVERY CALL 720-J

DOLLAR FOR DOLLAR YOU CAN'T BEAT A

'53 Pontiac

A GENERAL MOTORS MASTERPIECE



Best Friend a Dollar Ever Had!

Here is the perfect expression of the Pontiac idea—to build the finest, most beautiful, best performing car that can be created to sell at a price just above the lowest.

Notice how big it is—with its longer, 122-inch wheelbase. Notice, too, its distinctive Dual-Streak beauty. Put it through its performance paces. Consider its unsurpassed reputation for dependability and long-range economy.

Yes—measure this great 1953 Pontiac any way you like and we're sure you'll find that Pontiac is the best friend a few car dollar ever had. Come in soon and see for yourself.

HIGHLIGHTS OF PONTIAC QUALITY AND VALUE!

- Long 122-inch Wheelbase
- Exclusive Dual-Range Power Train* for Superb Performance
- Beautiful, Roomy, Luxurious Bodies by Fisher
- General Motors Lowest Priced Eight Powerful High-Compression Engine
- Established Economy, Long Life and High Re-sale Value
- Exceptional Steering and Parking Ease

*Optional at extra cost.

CHAS. H. JENKINS MOTOR COMPANY, Inc.

105 to 109 E. Queen Street

Phone 147

Edenton, N. C.

CHAS. H. JENKINS AND COMPANY

EDENTON

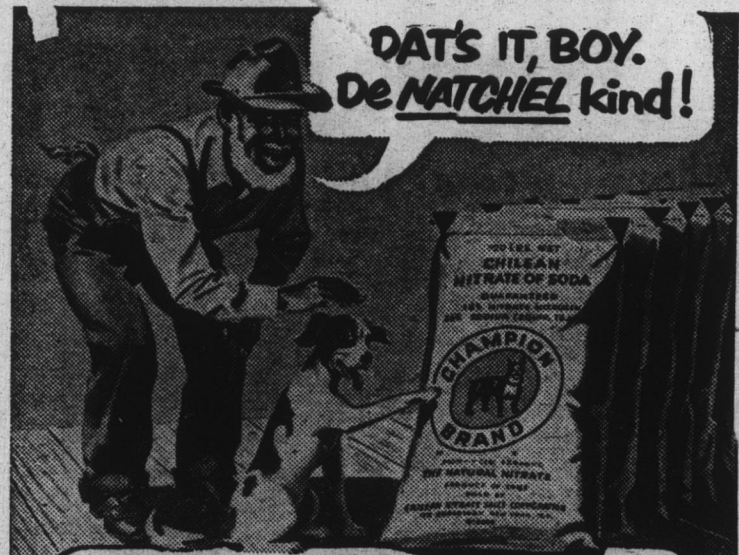
WINDSOR

WILLIAMSTON

AHOSKIE

AULANDER

WHAT'S IT, BOY.
De NATCHEL kind!



Compare the DIFFERENCE in NATURAL CHILEAN NITRATE. See the DIFFERENCE in results!

One difference between Natural Chilean Nitrate and other nitrogen fertilizers is quality — natural quality. It is the world's only natural source of nitrate nitrogen.

The nitrogen content of Chilean Nitrate is 100% nitrate nitrogen — 100% available — 100% fast-acting — 100% dependable.

No acidities is necessary. Chilean Nitrate is non-acid forming.

Rich in sodium and minor elements. Chilean Nitrate is rich in beneficial sodium that makes a stronger, deeper root system — improves crop health, vigor and nutritive value. It also contains small quantities of essential minor elements.

Chilean Nitrate is the ONLY fertilizer that supplies nitrate nitrogen, beneficial sodium and essential minor elements.

Noted for all-round efficiency. Quick-acting 100% nitrate nitrogen makes rapid, sturdy growth. Its 26% sodium content acts like potash when necessary and helps to increase the supply of available phosphate in the soil.

Chilean Nitrate's free flowing pellets guarantee rapid, accurate distribution under all conditions. No special precautions needed.

Helps maintain productivity of your land. When used consistently in a sound farming program, Chilean Nitrate builds up fertility, increases efficiency.

Year after year. Natural Chilean Nitrate increases yields — improves quality — defends against disease — fortifies against insect injury — counteracts soil acidity. Use Chilean Nitrate for solid satisfaction!



CHILEAN NITRATE of SODA