

**ESPECIALLY FOR PET OWNERS**

Pet birds that cough, snuffle or have labored breathing should be examined by a veterinarian for evidence of psittacosis, sometimes called "parrot fever" in man.

Poor management, malnutrition, and parasitism are major contributing factors to the maladies affecting the nation's estimated 25,000,000 dogs, according to the American Veterinary Medical Association.

Hyperimmune serum, to protect against rabies, must be given within 72 hours of exposure such as dog-bite, the American Veterinary Medical Association says.

Improper feeding or handling of pet birds is the most common cause of unseasonable molting, veterinary authorities report.

**Schenley GOLDEN AGE Gin**



\$2.40 PINT

\$3.65 4/5 Qt.

SCHENLEY DISTILLERS CO. DISTILLED DRY GIN. FROM 100% GRAIN NEUTRAL SPIRITS. 90 PROOF.

**We drive SQUEAKS out**



Chassis squeaks are warnings of wear. Drive in for our Sinclair Indexed Lubrication Service and let us stop those annoying squeaks... save wear and trouble! Drive in every 1,000 miles for smooth, quiet car performance.

**J. C. PARKS SERVICE STATION**  
PHONE 9732 EDENTON, N. C.



**Special Offer**

2HP — 2-CYCLE ROTARY

**ESKA Lawn MOWERS**

19-INCH CUT  
**\$69.50**



We have a complete line of BRIGGS-STRATTON and CLINTON air cooled motors and repair parts.

Complete line of famous make mowers such as MOTO MOWERS; also the well-known YAZOO MOWER with the big wheels for heavy cutting.

Briggs-Stratton and Power Products  
**See Us Now For Your Mower!**

COMPLETE REPAIR SERVICE

WE SERVICE EVERYTHING WE SELL!

**Hobbs Implement Co., Inc.**

GUY C. HOBBS, Mgr. EDENTON, N. C.  
"YOUR JOHN DEERE DEALER"

**"From Little Acorns Big Trees Grow"**



MRS. JOHN T. LAYTON, SR.

Not every woman has a "green thumb" like Mrs. John T. Layton. Her aim at the time Sr., Route 3, a member of the Beech Fork Home Demonstration Club. Well known to the people in this area for her good quality plantings, Mrs. Layton's flowers and shrubs have helped beautify many landscapes.

Several years ago, Mrs. Layton began rooting cuttings of shrubs

under the edge of her house, just as a hobby. Her aim at the time was to start a pretty border on the sides of her yard. That particular part was too sandy to mow for lawn grass and just grew up in weeds. The border was started with spirea, but Mrs. Layton planted any kind of flowers she could get.

Becoming increasingly more interested in this hobby, she read every flower book available to her.

Seven years ago, a green house was built. Flower cuttings for potted plants were started. It soon became more than a hobby as people learned about her lovely potted plants and healthy shrubs. But there wasn't much profit for her labors. If a customer bought a plant, Mrs. Layton usually gave enough blooming flowers or extras to equal the purchase.

Greatly admiring camellias and azaleas, Mrs. Layton purchased a "Professor Sergeant" variety camellia. Naturally she started rooting cuttings, finding that it could be done quite successfully. From then on, Mrs. Layton states she begged a cutting from anybody she could. A brother has helped her to get many new varieties.

Well, that border was still in her mind. Being very sunny, she decided to set out pine trees which would furnish an excellent shade as they grew, thus making a suitable place for azaleas. Although the border is most attractive in its blooming coat of many colors, Mrs. Layton plans many more beautifying improvements.

Her hobby had begun to outgrow her. Mrs. Layton found shrubs more profitable than potted plants; therefore, she increased her planting area to include a portion of the field and quite a large shady section on its edge, with facilities for irrigation. There being more work involved than one person could handle, Mrs. Layton welcomed her son as a partner.

This year, 2,000 camellias have been put out and rooted. This makes 70 varieties available to her customers. Mrs. Layton has sought the advice of experts to help expand and improve her nursery business, which at the present time includes some cut flowers in season, potted plants, azaleas, camellias and most every kind of shrub suited to this area.

"From little acorns big trees grow." This could certainly apply to Mrs. Layton's flower business. A hobby has become a profitable enterprise.

Through the years, Mrs. Layton has shared her lovely flowers with so many people. Shut-ins have been cheered by their beauty. Neighbors have grown shrubs from her cuttings. And every other Sunday, her church friends witness the tender Hand of God's love in the flower arrangements which Mrs. Layton furnishes to beautify the sanctuary.

**TERMITES SWARMING?**

CALL **OTTO THE ORKIN MAN** SINCE 1901 **FREE INSPECTION**

**ORKIN** WORLD'S LARGEST PEST CONTROL COMPANY

PHONE 3223

Smart youngsters get home often by Long Distance Telephone

When youngsters can't make a trip home, a long distance telephone homecoming is so enjoyable. Long distance service is fast and personal. It's the smart way to keep in touch. And it's economical, too... especially if you call after 6 p.m. or all day Sunday when low rates are even lower.

**Nor. & Car. Tel. & Tel. Co.**  
Elizabeth City - Edenton - Hertford  
Mantoloking - Sunbury

**PURE-PREMIUM,**  
THE RECORD-PERFORMING  
GASOLINE. GETS ANOTHER  
**BIG OCTANE BOOST**

**It's a Super Premium Now!**

Available right now in our pumps is a super PURE-PREMIUM GASOLINE.

It has been boosted in octane and stepped up in quality. Now it is ready to unleash its greater antiknock power in your car.

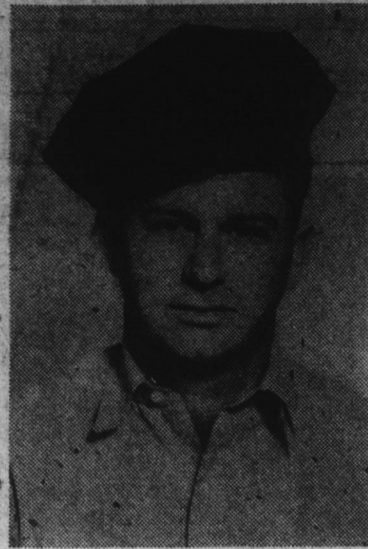
Bear in mind that Pure-Premium (even before this octane boost) held more certified performance records than any other gasoline, according to NASCAR. Now, it's better than ever. Blended and customized for our climate, locality and season.

Try stepped-up Pure-Premium in your car. It's the gasoline proved by performance again and again and again!



**Winslow Oil Co.**  
HERTFORD, N. C.

**Station Operator**



With Harold Stokes as manager, the new Stokes' Sunoco Service Station will observe its grand opening Friday and Saturday, May 17 and 18.

**Corn Diseases Are Costing You Money**

Corn is one of the most important grain crops in North Carolina. Each year corn production potential in the State is reduced due to the effects of disease.

There are a number of diseases that attack corn, and in some individual fields losses are often as high as 10 per cent.

Diseases lower the value and quality of the grain and may increase harvesting costs when affected plants lodge. All parts of the plant may be attacked—the ears, leaves, stalks and roots—at various stages of development.

Corn ear, leaf and stalk diseases generally are favored by warm, wet weather. Seedling diseases are more severe in cool, wet weather following planting. Pythium root rot is generally more severe in wet than in dry soils. Symptoms of nematode damage are most pronounced in dry, sandy soils.

There are no completely effective measures for controlling corn diseases; however, losses can be minimized by following certain recommended practices. The grower should become acquainted with disease problems and factors affecting their severity.

The results of some of the latest research on corn diseases and their control has been published by the North Carolina Agricultural Extension Service at State College. The booklet is called "Major Corn Diseases in North Carolina" and was prepared by J. C. Welis, plant pathologist for the N. C. Agricultural Extension Service and R. R. Nelson, plant pathologist for the U. S. Department of Agriculture. For your free copy of Extension Circular No. 408, contact your local county farm agent.

**BLOODSHED BOXSCORE ON N. C. HIGHWAYS**

Raleigh—The Motor Vehicles Department's summary of traffic deaths through 10 A. M., May 13, 1957 is as follows:  
Killed This Year.....351  
Killed To Date Last Year.....369

**MOVE TO PLYMOUTH**

Friends will be interested to know that Mr. and Mrs. Rufus Carraway on Tuesday of this week moved to Plymouth, where they will make their home.

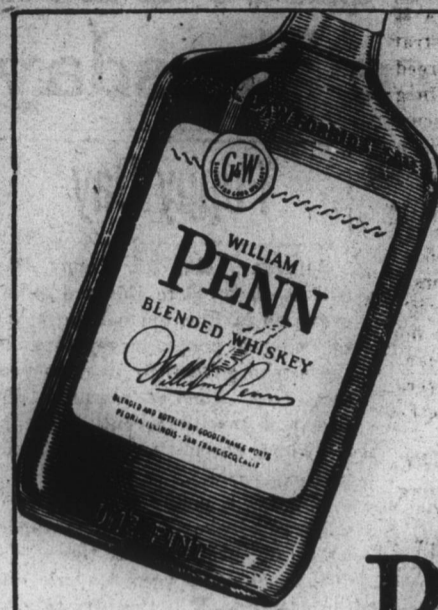
**RECORD EGG PRODUCTION**

Based on reports from producers, the April egg production is estimated at 176 million, a new high for the month and equals the record production of March 1957, according to the North Carolina Crop Reporting Service. The April 1957 production represents an increase of about 15 million eggs from the record production established in 1956. Layers on hand numbered to go with it.

9,494,400 compared with 8,885,000 a year earlier.

**Probably So**

Thrifty Customer—I want to buy a spur, please.  
Saddler—You mean a pair of spurs, don't you?  
Thrifty Customer—No, one will be plenty. If I make half of the horse go, the other half will have to go with it.



66 PROOF 6 YEARS OLD

WILLIAM PENN BLENDED WHISKEY

WILLIAM PENN BLENDED WHISKEY  
\$2.25 PINT  
\$3.55 4/5 QUART

GOODERHAM & WORTS, LTD., PEORIA, ILL.



66 PROOF

Old Gold Straight BOURBON Whiskey

Old Gold

\$2.10 PINT  
\$3.35 4/5 QUART

TYRONE DISTILLING COMPANY LAWRENCEBURG, KENTUCKY

**MR. FARMER!**

SEE US TODAY FOR YOUR

**Planting and Spraying Needs**

WE HAVE A COMPLETE STOCK OF

**FARMALL PLANTERS**

**And Fertilizer Attachments**

**FERGUSON PLANTERS—AYERS PEANUT PLANTERS**

**John Blue Fertilizer Attachments**

**Broyhill Chemical Sprayers**

**SEE US NOW FOR ALL YOUR NEEDS**

**Byrum Implement & Truck Co.**  
Edenton, North Carolina