

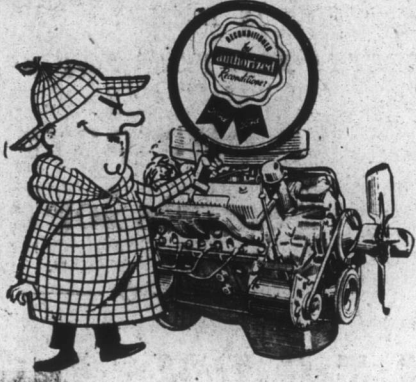
## SOIL CONSERVATION NEWS

By G. SAMUEL COX, Work Unit Conservationist

C. E. White of Tyner has recently installed a surface inlet system on his farm. The inlet is a cement block catch soil and debris carried by structure which handles the surface water, thus preventing it from accumulating from getting into and possibly block-

Mister PART-icular says . . .

Get the best there is . . .  
why take a chance on  
"second best"?



Give your Ford a new lease on life with  
A FORD DEALER AUTHORIZED  
REMANUFACTURED ENGINE!

There's a big difference between a Ford Dealer Authorized Remanufactured Engine and an ordinary "rebuilt." For one thing, you get a FULL WARRANTY on our Ford Dealer engine, but most rebuilds are not guaranteed. For another, these engines are worlds apart in quality. And the bargain price you may pay for a short block rebuilt is just the first cost you pay. If you're thinking of repowering your Ford, come in and talk to us first.

F.D.A.P.

QUALITY CARE FOR QUALITY CARS  
**Albemarle Motor Co.**

W. HICKS ST. PHONE 2144 EDENTON  
Dealer's License No. 1933

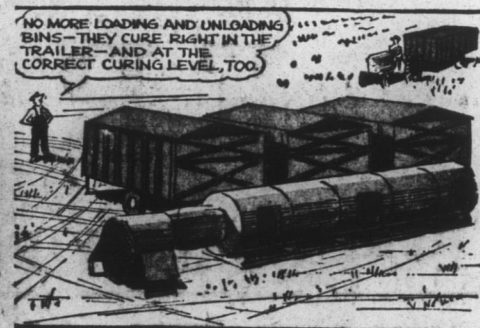
## COMPARE . . . Roanoke PEANUT CURING SYSTEM

Heavy Duty Trailers Require Only  
3 Steps—Not 7 As With Bin  
Methods—Compare the Methods  
SAVE WITH ROANOKE

The Roanoke Way . . . Three Steps



Step 1—Roanoke Way



Step 2—Roanoke Way



Final Step—Roanoke Way

Save Time,  
Money and Labor  
With Roanoke  
Curing System

THE BIN WAY—7 STEPS (8 Steps If Bins Are Overloaded)

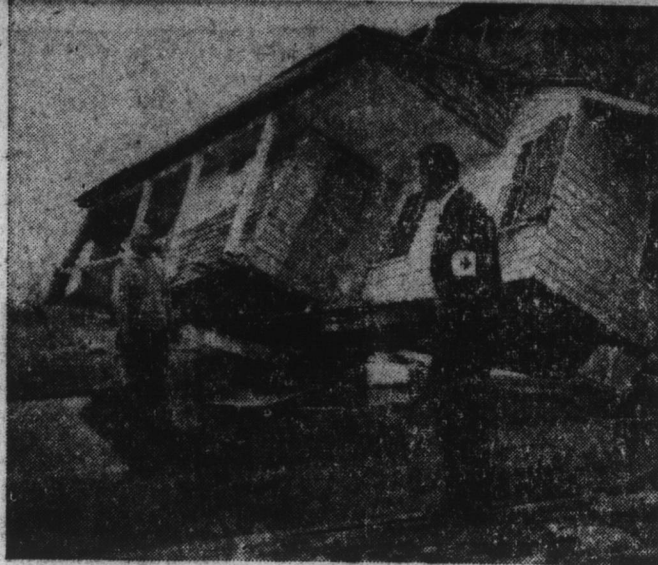
Roanoke Heavy Duty Trailers Give Quality  
Cured Peanuts . . . System Is 100% Portable

See Your Roanoke Dealer . . . Complete Peanut Harvesting Equipment

**Harrington Manufacturing Co., Inc.**

Since 1922—Service and Fair Dealings

Leviston, N. C.



NAGS HEAD, N. C. — A victim of the big March 7 coastal storm, Thomas W. Foster shows Red Cross worker J. White Guyn what's left of Foster home toppled into Roanoke Sound. Red Cross is paying rental on temporary living quarters for the Foster family, has supplied clothing and medicines, will supplement the family's resources for building and furnishing another home at another site. Many other victims of storm are being similarly helped. Funds were provided in annual campaigns.

ing his tile system.

George Burdick, District Biologist, with the Wildlife Resources Commission for this district, informed me that some annual wildlife food planting material was still available for distribution to anyone that requests it. This material usually consists of a mixture of soybeans, milo, millet, lespedeza and cowpeas. Burdick says it can be seeded up through June. It will provide a temporary fall and winter food supply for farm game. Irregular corners in fields, small fields, woodland clearings, small blocks or strips are all good places to plant this material. Any requests can be made direct to Mr. Burdick or any wildlife worker. They can also be made through the County Agriculture Agent, Soil Conservation Service, ASCS Office or any other agricultural worker.

Farm drain tile was staked on Colbert Byrum and Jimmy Parrish's farms last week. These jobs were staked by SCS technicians after the farmer had contacted the SCS office and scheduled a date to do this work. Both of these jobs were planned in a basic soil and water conservation plan by the farmers in 1961. These basic conservation farm plans were made after the farmer had re-

quested help from the Albemarle Soil and Water Conservation District in developing a complete plan for their farms. To receive this assistance a farmer must apply to his local district supervisor for assistance and then his application will be processed along with others that have made request. Supervisors for Chowan County are Lloyd C. Bunch, Route 1, Edenton; H. Fahey Byrum, Route 1, Edenton; and Joe A. Webb, Route 2, Edenton.

### Land Use Study Reveals Impact Of Urbanization Over Million Acres Annually Taken From Farms

An insight into the impact of population and economic growth on the physical face of America is provided by the U. S. Department of Agriculture in a new study of the trend of the major land uses in the United States. The figures show a steady shift of more than a million acres annually, an area close to the size of the State of Delaware, out of farmland and other open country over recent years into the living, working and transportation space demanded by an expanding urbanized and industrialized society.

As a result, the total of land in such uses—urban areas, highways and roads, airports and railroads—added up to more than 52 million acres in 1959 as against about 41 million acres in 1950. This represents the conversion in the past decade of a territory three and one-half times that of the entire state of Connecticut.

**Dramatic Urban Growth**  
The most dramatic part of this growth has occurred in the nation's urban areas, which have been spreading out at the rate of over a half million acres a year and which now encompass an area of more than 27 million acres, bigger than all of Ohio. It is in these cities, suburbs and outlying fringes that seven out of every ten Americans now live, more than 125 million in the count of the 1960 census. And it is into these areas, too, that the predominant part of the people's savings in their thrift institutions have been flowing as investments to help build the homes and schools for an expanding population, the industrial and business complexes, and the shopping and distribution facilities that are the basis of the country's strength and that have been the dynamic element in our economy.

In fact, urban growth has reached the point where the giant supermetropolis is taking

shape. The Census Bureau pinpoints one along the Atlantic seaboard, covering ten states from New Hampshire to Virginia and containing over a sixth of the nation's population. The beginning of two others is seen in other parts of the country, one from Chicago down toward St. Louis and the other in the Los Angeles-San Diego area.

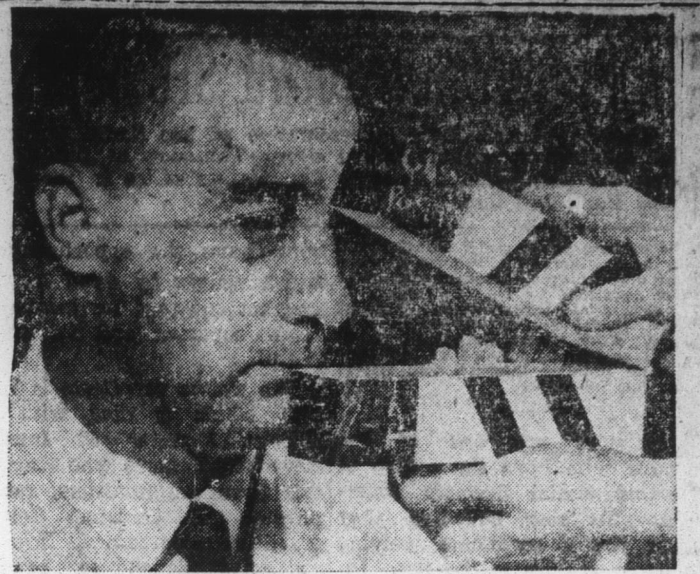
**Still Wide Open Spaces**  
But as far as the facts and figures are concerned, all this urban growth and the changes that have accompanied it have made little more than a dent in our bountiful heritage of "lebensraum." The land area of the continental United States alone is 1.9 billion acres, according to the Department of Agriculture. Practically 60 per cent of this is still land in farms. A third of the entire country remains forested. Thus America still re-

mains a land of wide open spaces.

The figures show, in fact, that cropland available to feed our rapidly growing population has shown little change of consequence for many years and still represents close to a fourth of the continental land area. That this has been more than enough for our needs and will continue to be for years to come, is evidenced by the record farm production of recent years as the result of extraordinary productivity in agriculture and the huge surpluses that have been accumulated.

### ATHLETE'S FOOT GERM HOW TO KILL IT.

**IN 3 DAYS.**  
If not pleased with strong, instant-drying T-I-L, your 48¢ back at any drug store. Watch infected skin slough off. Watch healthy skin replace it. Itch and burning are gone. TODAY at all drug stores. —adv.



REEL LIFE—Member of the film crew prepares to sound the clack boards before the next "take," as astronaut Capt. Virgil "Gus" Grissom appears in a documentary movie. The film was being shot at the Bermuda Tracking Station.

# AT AUCTION!!

Monday, April 16th, 1962 - 10:30 A. M.

Sale To Be Held At National Guard Armory

A portion of the former Naval Auxiliary Air Station, known as the . . .

## Marine Corps Outlying Field

Located in Chowan County between NC Hwy. No. 32 and Albemarle Sound, approximately four miles southeast of . . .

## U. S. Gov't Surplus Real Estate

EDENTON, NORTH CAROLINA

BEING OFFERED IN

## 11 Tracts Including 59 Structures Totaling About 2370 Acres

EXTRA ATTRACTION -- 21 OFF-SITE BLDGS. TO SELL

This former Marine Corps Outlying Field, also formerly known as the Naval Auxiliary Air Station, will sell at public auction in 11 tracts. The parcels will vary from 15 acres to 770 acres. There are 59 structures located on these tracts and they will sell with the acreage. This property is located on beautiful Albemarle Sound and four of these tracts have large footage on North Carolina's most noted fishing grounds. This property is located around the city owned airport . . . a valuable asset to industries. Large timber tracts are also included in the

2369.82 acres.

Here is a long awaited opportunity for valuable land, that will be offered, tract by tract, to the public on April 16th, at public auction.

A special added attraction will be the offering of 21 structures for off-site use, now located on the airport property. You will be able to buy as many as you want.

Edenton, known as the "Cradle of the Colony," is one of the most historic and beautiful towns on the North Carolina Coast. You owe it to yourself to inspect the terrific potentials of this property.

### EXCELLENT INDUSTRIAL SITES

Ideal property for large industrial sites. Located adjacent to the city owned airport, served by the main line of the Norfolk and Southern RR and bordered by NC Highway No. 32, plus access by water. This large acreage of flat land has excellent industrial opportunities.

### VERY LIBERAL TERMS

TERMS: \$2,500 or less, cash. \$2,500 to \$10,000, 1/4 cash, balance 8 years or less, payable in equal quarterly installments. Over \$10,000, 1/5 cash, maximum 10 years, payable in equal quarterly-annual installments. Interest on all deferred payments, 5% per annum, payable quarterly-annually. Bid deposits vary on tracts. Write for schedule. Sealed bids will be accepted. Write T. Lynn Davis. Forms will be sent to you.

### WRITE OR WIRE FOR BROCHURE

Write, wire or call immediately for two color brochure, illustrated and with full details on property selling. Our representative will be in Edenton at the Eden Motel, two weeks prior to the sale!

## T. LYNN DAVIS

## REALTY & AUCTION CO., INC.

4459 Broadway -- SH 2-5434 -- Macon, Ga.

Or the GENERAL SERVICES ADMINISTRATION, Real Property Division  
1776 Peachtree St., N.W. Phone Trinity 6-3311, Ext. 5631, Atlanta, Ga.



Cover Tight  
To keep leftover egg whites, place in jar or dish and cover tightly.