



AROUND THE FARMS IN CHOWAN COUNTY

By C. W. OVERMAN, Chowan County Agent

The Chowan County Fair: The 1962 Chowan County Fair is in progress as of this writing on Tuesday. The people of the county have cooperated wonderfully in the large number of exhibits and the quality of exhibits. In my opinion, it is one of the very best exhibitions of farm and home commodities we have ever had. Judging was completed on Tuesday afternoon.

In the booth entries, the junior boys placed as follows: First place, Ryland 4-H Club; second place, John A. Holmes Future Homemakers of America; third place, Enterprise 4-H Club; fourth place, Cross Roads 4-H Club; fifth place, Advance 4-H Club; sixth place, Rocky Hook 4-H Club. In the adult class Chowan Home Demonstration Club placed first and Colonial Home Demonstration Club placed second. Ryland 4-H booth was judged to be the champion booth of the fair.

The entries in field crops, horticultural crops and in the home economics divisions were too numerous to announce the winners in this article. The space allotted for these divisions was filled to the limit and crowded with exhibits. Again, this shows the real spirit of our people in supporting their county fair.

1962 Corn Variety Demonstration Results: Results on the corn variety demonstration conducted with William Wood and his farm manager Earl White have been completed. These cooperators gave us excellent cooperation in fertilization, cultivation, and management throughout.

Master Point Winners In Round Of Bridge

Master point winners Tuesday night in the bridge contest held at the Barker House were as follows:

North-South

1—Mrs. R. H. Goodwin and Earl Goodwin.

2—Mrs. W. G. Edwards and Mrs. Jack Brinn, Hertford.

3—Mr. Monds and Mrs. Al Kenton, Hertford.

4—Miss Lecelles Griffin and Mrs. Arthur Gallup, Elizabeth City.

East-West

1—Mrs. Frank Wood and Mrs. J. W. Davis.

2—Mr. and Mrs. Carlton Perry, Elizabeth City.

3—Mrs. Earl Goodwin and Mrs. R. F. Elliott.

4—Mrs. Elton Forehand and Mrs. Bruce Jones, Jr.

Plans Completed For Democratic Rally

Continued from Page 1, Section 1 with Senators B. Everett Jordan and Sam J. Erwin and Representative Herbert C. Bonner also on the program.

A parade led by the John A. Holmes High School Band will begin at the Court House at 6 o'clock and continue to the armory for the dinner and rally.

Warrick Gurkin of Plymouth and Mrs. Merrill Evans of Ahoskie are co-chairmen of arrangements, assisted by the Chowan County Democratic Executive Committee members.

Local persons helping to make the rally a great success are Mrs. E. N. Elliott, caravan coffee committee; George A. Byrum, R. D. Dixon and Mrs. L. E. Davenport, programs; Mrs. C. A.

In the early season class of varieties Dekalb 805 yielded 129 bushels; Dekalb 633, 113 bushels; Funk's G-72, 120 bushels; Funk's G-83, 120 bushels; Pioneer 3166, 136 bushels; Van's V8-2, 109 bushels; Van's V8-1, 149 bushels; Van's V8-1A, 102 bushels; Speight's D-8-1, 120 bushels per acre.

The mid-season varieties yielded as follows: Embryo Compact, 87 bushels; Embryo 222TA, 116 bushels; Embryo 1-2, 82 bushels; Embryo X-1, 114 bushels; Pioneer 7374, 133 bushels; Van's V8-XO1, 91 bushels; Funk's G-76, 104 bushels; McNair's 304, 131 bushels.

The full season varieties yielded as follows: Funk's G-795W, 163 bushels; Funk's 11666-121, 112 bushels; Pioneer 309B, 151 bushels; Van's V8-102, 118 bushels; Pioneer 309A, 134 bushels; Pioneer 8224, 132 bushels; Pioneer 8218, 132 bushels; McNair's 444, 115 bushels; Dekalb 1003, 127 bushels; Speight's D-14, 139 bushels; and Funk's G-144, 126 bushels per acre.

Moisture tests were run on a sample from each variety and yields were adjusted to 15.5 per cent moisture.

Evaluations were also made on grain quality, average plant distance in the row, number of ears per one hundred stalks, ear height, and per cent of stalks standing. All of this information on the demonstration will be printed in table form and those desiring copies may obtain them by contacting the county agent's office in Edenton.

Phillips, Mrs. Ed G. Bond, Mrs. J. M. Thorud and Mrs. W. J. P. Earnhardt, decorations; Mrs. B. W. Evans, George A. Byrum and J. M. Thorud, food; J. H. Conger, Jr., and Hiram Mayo, house committee; Mrs. Ed G. Bond and Mrs. John Shackelford, ushers; Mayor John A. Mitchener, parking; J. H. Conger, Jr., T. C. Byrum, Jr., and Carlton Jackson, lighting; James Bond, Hector Lupton and Mrs. J. P. Ricks, Jr., publicity.

JOINT DINNER MEETING

William J. Coffield, Jr. Post No. 9280, and the VFW Auxiliary will hold a joint dinner meeting Tuesday night, October 9, at 7:30 o'clock. All members of both organizations are urged to attend.

20 YEARS AGO


Continued from Page 1, Section 1 asking for the return of the Rev. W. C. Benson to the Edenton Methodist Church. Mr. Benson occupied a vital position as chief of communications in the local Civilian Defense organization.

After holding their meetings for several weeks at Colerain and the Community Building at Cross Roads, the Edenton Lions Club returned to Hotel Joseph Hewes to meet.

Edenton merchants agreed to remain open Thursday nights until 9 o'clock in order to accommodate workers at the Marine Air Station.

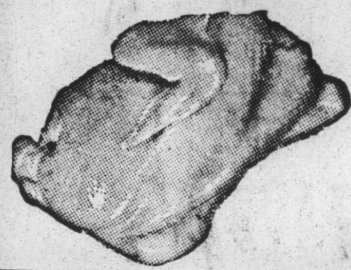
After being held up for over a month, Ernest Kehayes opened the Albemarle Restaurant on Broad Street.

Chowan County made a very creditable showing in the first state-wide blackout.



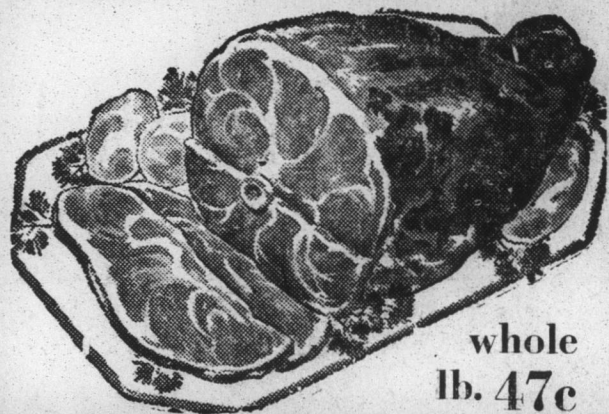
LOW PRICES

PLUS... VALUABLE STAMPS



Small Type
3-4 Lb. Average

HENS 19^c lb.



whole
lb. 47^c

Harrell's Smoked Tenderized — Butt Portion, Lb. 49^c

HAMS 39^c lb.

FLAVORITE — WESTERN — ROUND

STEAKS 89^c lb.

ECONOMY GROUND BEEF 3 lbs. 99^c

PERMANENT TYPE
Anti Freeze

gal. \$1.19

GULF MOTOR OIL quart 19^c

ECO TALL CANS EVAPORATED MILK 6 cans 75^c

Full 1/4 Lb. Pure Lord Calvert Black Pepper... 29^c

First Choice Pack Biscuits... 6 cans 49^c

No. 303 Cans

RED GLO TOMATOES 10^c Can

Sticks - ECO Farm

OLEO 15^c lb.

STRICTLY FRESH

Small Eggs 1.00 3 DOZEN

1-lb. Bag Coffee

Maxwell House 65^c lb.

72" x 92"

Rayon Blankets \$2.59

NO. 303 PHILLIPS

MIXED VEGETABLES 10^c can

Easy Monday

BLEACH 12^c Quart

NO. 303 VALLEY GEM

JUNE PEAS 10^c can

60/80 MARCAL

Table Napkins 10^c pkg.

5c OFF — KRAFT

SALAD OIL 49^c qt.

Deluxe 6-ft.
STEEL TAPE
each 65^c

HEAVY DUTY
1/4-INCH DELUXE
Electric Drill
\$18.95

DELUXE
COMPLETE PROPANE
Torch Kit
\$9.95

12-oz. Red Bird
Lunch Meat
can 29^c

24" Globemaster
Alum. Level
\$3.98

GLOBEMASTER
HEAVY DUTY
Power Saw
\$39.95

— FROZEN —

Libby's — Family Size

APPLES PIES ... each 29^c

Idaho Valley

FRENCH FRIES 2 lb. bag 31^c

1-LB. STRIETMANN
Zesta SALTINES
box 31^c

1-LB. BAG SUNSHINE
APPLE SAUCE COOKIES
1-lb. bag 35^c

8 1/2-oz. NBC
PEANUT KLUSTERS
box 39^c

500

FREE EXTRA
TOP VALUE
STAMPS...
THIS WEEK

With Purchase of 10 Selected Items On Display!

Deluxe — 10 1/2"
Fence Pliers \$2.49

Deluxe 26" Globe
Rip Saw \$2.98

1-LB. HARRELL'S

PURE LARD 15^c lb.

SUPER MARKET

P&Q

EDENTON, N. C.

— PRODUCE —

No. 1

SWEET POTATOES 35^c 5 lbs.

Virginia — Red Delicious

4-lb. cello

APPLES 39^c

Fancy — Long Green

CUCUMBERS 5^c



6
YEARS
OLD

Old Gold

Straight
BOURBON
Whiskey

\$2.25

\$3.00 4/5 QUART