

News From ASCS Office

By H. O. WEST

Tobacco Referendum
A referendum to determine whether there will be an acreage-pounding on tobacco for 1968, 1969 and 1970 will be held on Tuesday, July 18. Tobacco growers will decide whether marketing quotas and price support will continue in effect for the next three years. As required by law, two-thirds of the growers voting must vote "yes" for the program to continue in effect. Polls will be open from 7 A. M. until 7 P. M. and will be located at the following places:

- A Community—ASCS office.
- B Community — Earl Smith's store.
- C Community — H & H Grocery (formerly H. R. Peele's store).

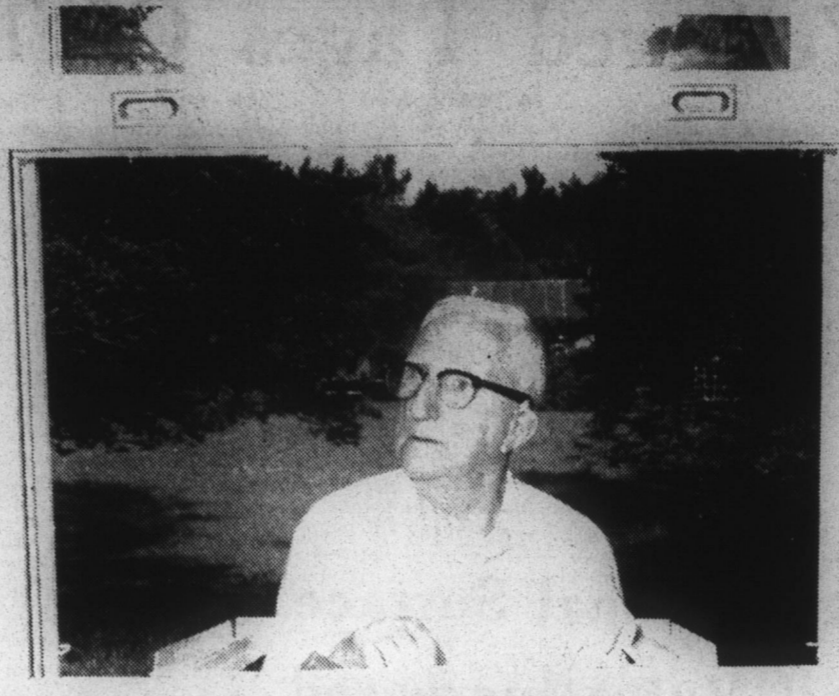
Peanut and Cotton Promotion Referendums
Cotton and peanut producers, along with tobacco farmers, have an obligation on Tuesday, July 18. Besides voting on the tobacco program, producers will vote whether or not to continue the assessment program on tobacco, peanuts and cotton. Funds collected under these programs are used for experimental and promotional purposes. Although these programs are not affiliated with ASCS, the referendums will be held on the same day and at the same polling places.

1968 Tobacco Notices
Operators of tobacco farms were mailed their 1968 tobacco notices July 7. These notices show the basic allotment and quota for 1968. Any adjustment for overmarketing or undermarketing of the 1967 crop will be made later and producers will receive a revised notice during January of 1968. These first notices were mailed at this time since the law requires that a producer know his allotment for the following year before he votes in the referendum.

Award Is Won By Mrs. Allred

Mrs. Mary W. Allred of Concord won a writing award in the 1967 Writer's Conference at Ridgecrest. Mrs. Allred, formerly a resident of Chowan County, is correspondent for the American Bible Society, writing in The Chowan Herald. She was one of some 100 persons from throughout the United States attending the June conference.

Mrs. Allred, however, was recipient of the only award presented in the field of juvenile short story. The wife of the Cabarrus Baptist Associational Missionary, Rev. Thurman W. Allred, she was the only Tar Heel winner. The manuscript, written for the 12-year-old group, was entitled "A Growing Up Summer."



FRAMED—Frank Muth, one of Edenton's most active senior citizens, was framed by a window at St. Ann's Catholic Church Monday as he worked in the hot, humid weather installing an air conditioner. Muth will be 80 on November 13 and can still put in a day of work which would tire many his junior.

ELECTED TRUSTEE

Mrs. Thomas Cheers, Jr., was elected a trustee of the North Carolina Symphony Society at its annual meeting in Chapel Hill on July 8.

Brown Joins First National

John William (Bill) Brown has joined the headquarters staff of First National Bank of Eastern North Carolina and will administer the bank's newly-created "Executive Credit Card" division.

The unique statewide credit plan was formed last month in collaboration with American Express Company of New York. It offers a \$2,000 line of instant credit in addition to regular American Express card benefits.

Mitchell F. Allen, Jr., president of the banking system which has 22 offices from Boone to Wilmington, including Edenton, announced Brown's appointment at his Jacksonville headquarters today.

Brown recently served as combat intelligence officer in Vietnam for the First Marine Division. Earlier he was White House "social aid" in Washington and also on the staff of the commander-in-chief, Atlantic.

Allen, in making the announcement, also reported that "more members have signed up for the Executive Credit plan during the first 30 days than had been projected the first three months."

"We believe this is due largely to the plan being tailored closely for executives (civilian and military) who require a card not only for travel and entertainment expenses but also relatively large amounts of cash on short notice," Allen added.

Mass Schedule At St. Ann's

Father Joseph J. Lash, pastor of St. Ann's Catholic Church, announces the following schedule of masses:

Thursday, 8 A. M.; Saturday, 8 A. M.; Sunday, 8 A. M. and 12:30 P. M.; Monday, 8 A. M.; Tuesday, 7 P. M.

At All Souls' in Columbia: Sunday, 10 A. M.; Wednesday, 7 P. M.

Air Conditioned
Taylor Theatre
EDENTON, N. C.
Wed. and Thurs.
July 12-13—
Elke Sommer in
"DEADLIER THAN THE MALE"
FIVE BIG RAYS
Friday Thru Tuesday
July 14-15-16-17-18—
Walt Disney's
"THE GNOME-MOBILE"
With Walter Brennan
and Karen Dotrice
First Floor 50c - 75c - 90c
Balcony 35c and 60c
Wednesday, July 19—
Debbie Reynolds in
"THE SINGING NUN"
ALL FEATURES IN COLOR

BRING US YOUR FILM FOR PROMPT PROCESSING

EDENTON

BRING US YOUR FILM FOR PROMPT PROCESSING

IF YOU CAN'T BRUSH AFTER EVERY MEAL—BRUSH OFTEN. AND ALWAYS USE

ROSES

GLEEM Large Size **44**

HOT JULY OFFER

NO MONEY DOWN WITH TRADE

Low Cost Cooling! Rust Proof Case!

Fashionette Air Conditioner

- 5000 BTU/Hr. Cooling Capacity • Duramold case made of GE LEX-AN®. Weathers elements—can't rust ever! Lightweight for easy installation • Efficient bedroom cooling • Quiet operation • Simplified controls • Removable, washable filter • It's take-home portable.

\$122.95

7500 BTU/Hr.! 7 1/2 Amp! Install it yourself!

Thinline II Air Conditioner

- Built-in Easy-Mount side panels let you install the unit yourself, in minutes. • Use on any adequate 115 volt circuit. • 4-way air directors. • Remarkably quiet operation. • 10-position automatic thermostat. • King-size air exchanger. • 2-speed air control. • Reusable, washable filter.

\$219.95

Low Price! High Air Flow! 23,000 BTU/Hr.!

Superline Air Conditioner

- Multi-ton cooling capacity. • Four rotary air directors. • Automatic thermostat. • Two fan speeds. • Quiet GE rotary compressor. • Reusable air filter. • Heavy duty construction.

\$319.95

Two-door convenience at a low, low price

Two Door 12' Refrigerator-Freezer

- Zero-degree freezer holds up to 91 lbs. frozen foods on long-term basis. • 2 flex-grid ice trays. • Freezer door shelf holds 1/2 gal. ice cream cartons. • Huge porcelain enamel vegetable bin holds 9/10 bushel. • Deep door shelf holds 1/2 gallon milk cartons, and tall bottles. • Big convenience for narrow space. Only 28" wide. • G-E Colors or White.

\$189.00

Big Capacity! Low Cost!

Full width freezer. Chiller tray. Huge vegetable bin.

\$174.00

Bigger Loads... Cleaner Loads

General Electric Filter-Flo® Automatic Washer

- Family-Size Capacity!
- No Lint-Fuzz on Clothes
- 3 Wash Cycles!

Washes up to **16 lbs.** mixed, heavy fabrics!

\$169.00

Giant freezer section holds up to 150 lbs.

- Automatic defrost refrigerator section. • Slide-out shelf. • Twin vegetable bins.

\$259.00

Gives You A Way To Wash Everything!

General Electric Filter-Flo® Washer

- Mini-Basket®
- Up to 16 lbs. capacity
- Three wash cycles
- Permanent Press Cooldown

\$219.00

*T.M. of G.E. Co.

TAKE YOUR CAR WHERE THE TIRE EXPERTS ARE

GOOD YEAR

Low Down Payment Easy Payment Terms

412 S. Broad St. Telephone 482-2477 Edenton, N. C.