

# White-Westinghouse your house!



**White-Westinghouse**  
**18.2 cu. ft. Refrigerator/Freezer**  
 FT190

- Family Size, Frost Free
- Textured Steel Doors
- Optional Ice Maker
- Cantilevered Adjustable Shelves
- Large Crisper, Fresh Storage and Meat Pans

**\$559**



**White-Westinghouse**  
**15.3 cu. ft. Chest Freezer**  
 FC153

- Energy Saving Foam Insulation
- Lock with Pop-out Key
- Lift-out Basket
- Counterbalanced Lid with Magnetic Basket
- Defrost Drain

**\$368**

WITH THESE FALL



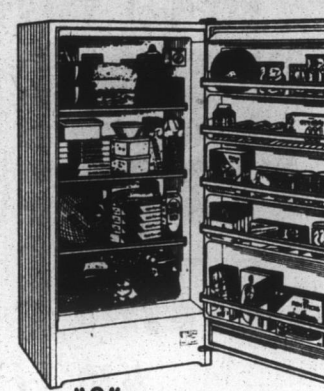
**TOUCHDOWN SPECIALS**



**White-Westinghouse**  
**21.1 cu. ft. Frost Free Refrigerator/Freezer**  
 RS216

- Cantilevered Shelves
- Chilled Meat Keeper
- Optional Ice Maker
- Energy Saver Switch
- Automatic Door Closers and Door Stops

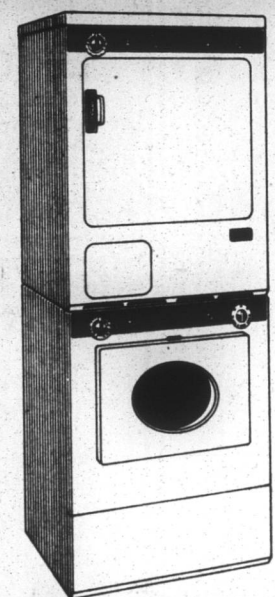
**\$798**



**White-Westinghouse**  
**16.0 cu. ft. Upright Freezer**  
 FU161

- Energy Saving Design
- Lock with Pop-out Key
- Fast-freeze Shelves
- Handy Defrost Drain
- Five Full-width, Deep Door Shelves

**\$358**



**White-Westinghouse**  
**Space Mates, A Full-sized Laundry Just 27" Wide**  
 LT170 Heavy Duty Washer  
 DE170 Heavy Duty Electric Dryer

- Stack Them or Build-in Undercounter
- Tumble Action Washing
- Permanent Press, Knit, Pre-wash/Soak Washer Settings
- Five Water Temperature Selections
- Permanent Press and Auto-dry Dryer Settings

**Both \$749**



**White-Westinghouse**  
**Heavy Duty Washer/Dryer**  
 LA500 Heavy Duty Washer  
 DE500 Heavy Duty Electric Dryer

- Weight-To-Save Lid
- Five Position Water Saver
- All Fabric Auto-dry Dryer
- Permanent Press and Knit Washer Settings
- Regular, Medium, Low, Air Fluff Dryer Settings

**LA500 \$387**  
**DE500 \$278**



**White-Westinghouse**  
**Self-Cleaning Range**  
 KF337

- Exclusive Speed-Broil® Broils on Both Sides at Once
- Automatic Timing Center
- Removable Elements
- Self-cleaning Oven
- 2-8" and 2-6" Surface Units

**\$449**



**White-Westinghouse**  
**Built-in Dishwasher**  
 SU450

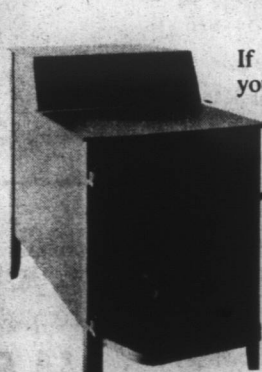
- Extra Powerful Two Level Scrubbing Action
- Self-cleaning Porcelain-on-steel Interior
- Cycles for Heavy Soil, Normal Soil, Rinse/Dry and Plate-warmer
- Energy Saver Switch Saves Electricity
- Automatic Pre-rinse

**\$319**

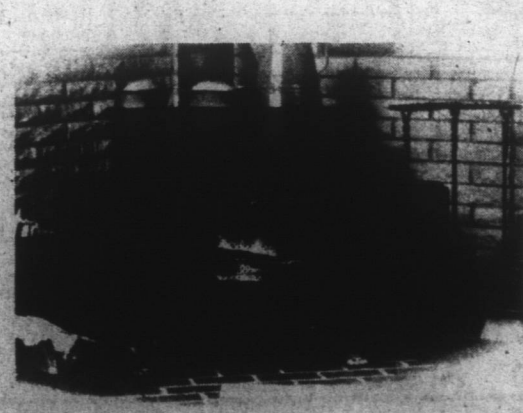
**FREE DELIVERY  
 GUARANTEED SERVICE  
 LOW MONTHLY PAYMENT  
 WITH YOUR FIRST PAYMENT  
 DUE IN JANUARY**

# Say goodbye to high gas, oil, or electric bills.

Fisher's new fireplace insert wood-burning stove is an efficient auxiliary heating unit that can cut your fuel cost by 50%, or maybe entirely. The Fisher insert stove is a fireplace and a stove. It needs no outside power source. There are no fans, motors, or blowers to burn out or be replaced. The Fisher insert stove heats 1500 to 2000 square feet, holds a fire over night, and burns logs up to 26 inches in length. It comes with either chrome plated or black doors, fireplace screen, and a 13-inch cooking surface. It is built of heavy plate steel, has a firebrick lining, and fits any fireplace 24 1/4 to 40 inches in width. Optional spacers are available for larger openings. Come in and see for yourself why Fisher's fireplace insert stove is another idea America is warming up to.




If you're looking into wood stoves, you're probably finding a lot of conflicting claims and confusion. Let us help make things clear. Besides selling what we honestly believe to be the finest stoves available, we've got plenty of experience in stove installation and maintenance. So come by soon. And bring your questions with you.



**We Install  
 Free Delivery, Easy Terms**

# RCA Color TV SALE

Our lowest price ever for an XL-100 console with XtendedLife chassis



**\$599<sup>00</sup>**

Check these deluxe features:

- Automatic Color Control
- Automatic Fleshstone Correction
- RCA's energy-efficient XtendedLife chassis
- Super AccuColor picture tube
- Automatic Fine Tuning



**RCA 19" diagonal XL-100 Roommate color TV**

NOW ONLY **\$399<sup>00</sup>**

Easy Terms Available

Pick a new RCA Roommate Remote XL-100 Color TV

now available with **ChannelLock Remote Control**






RCA's ChannelLock Remote Control—so advanced, so automatic, there's no need to fine tune ever.

PLUS

- Automatic Color Control and Fleshstone Correction

**Compact Console With AM/FM Stereo Receiver and Garrard Record Changer**




**Monteverdi**

Features:

- Slide rule tuning dial with lighted dial pointer.
- Lighted tuning meter and FM stereo indicator.

**SALE \$269<sup>00</sup>**

**High Fidelity Component Stereo System WITH GARRARD CHANGER AND 3-WAY SPEAKERS**



**Monteverdi**

Features:

- 30-watts per channel, minimum RMS driven into 8-ohms, from 30 Hz to 20 kHz with no more than 0.8% total harmonic distortion.

**SALE \$499<sup>00</sup>**

**BYRUM HARDWARE COMPANY**

"Serving the Albemarle for over 60 years"

Dial 482-2131 Downtown Edenton